

Anti-Rabbit IgG (Fc specific, Heavy Chain) Mouse Monoclonal Antibody



Catalog #: 52891

Aliases

Rabbit IgG Fc; IgG Heavy Chain; Mouse anti-Rabbit IgG Fc

Application Information

Molecular Weight: Predicted, 55 kDa; observed, 55 kDa

Clonality: Mouse monoclonal antibody

Clone ID: 25GB7465

Species Reactivity: Rabbit

Applications Tested: Western blotting (WB)

Immunogen

Rabbit IgG

Isotype

Mouse IgG

Storage Buffer

Supplied in 0.01M TBS (pH7.4) containing 50% glycerol, 1% BSA and 0.02% Proclin300.

Storage

Store at -20 °C for one year.

Recommended Dilutions

Western Blotting (WB): 1:500-1,000

Note: This product is for research use only.

Validation Data

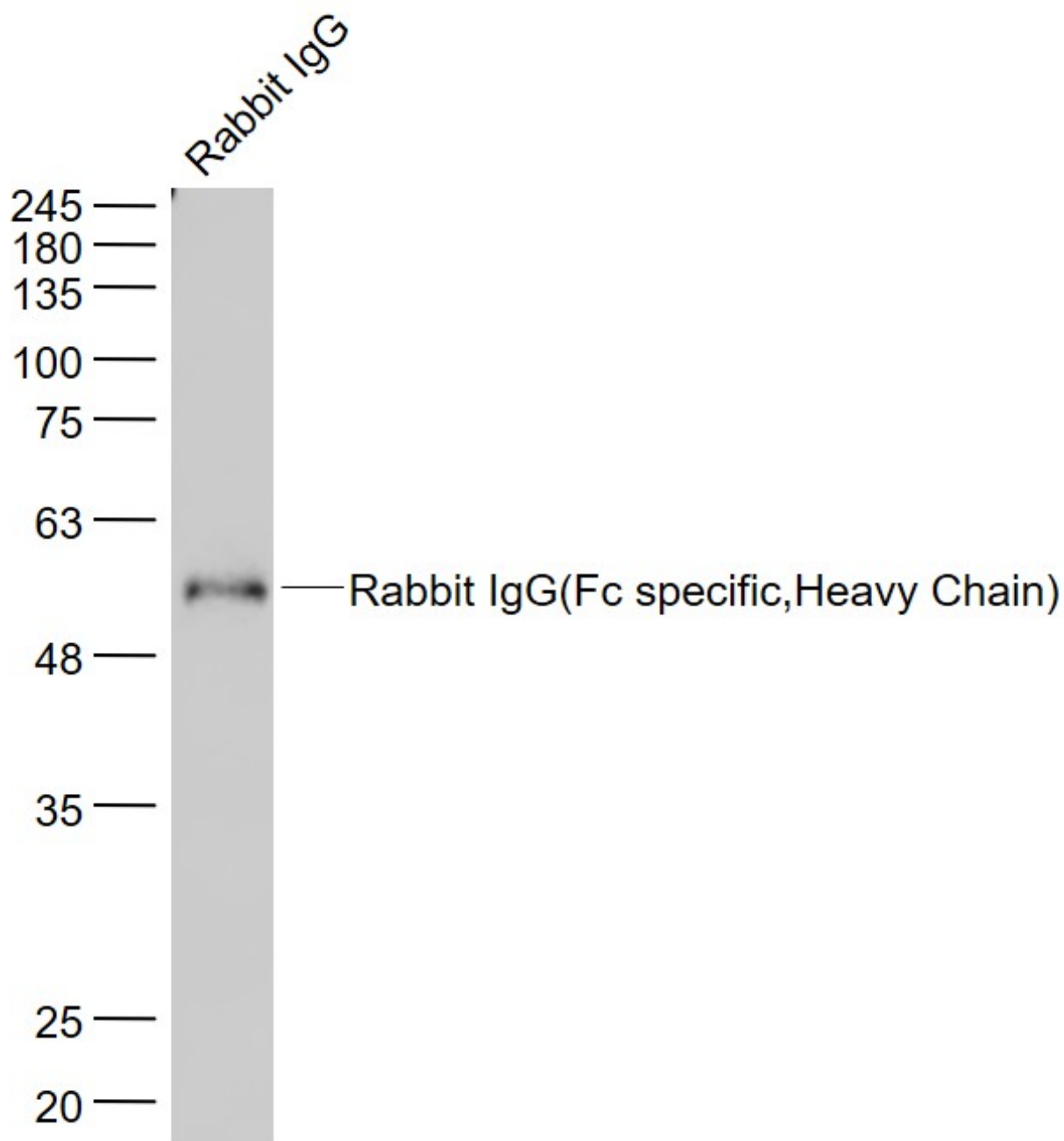
SUPPORT

SUPPORT@GENUINBIOTECH.COM
TEL: +1-540-855-7041

ORDERS

SALES@GENUINBIOTECH.COM
FAX: +1-540-855-7041

WWW.GENUINBIOTECH.COM



Western blotting analysis using anti-Rabbit IgG (Fc specific,Heavy Chain) antibody (Cat#52891). Rabbit IgG lysate (30 µg) were loaded and separated by SDS-PAGE. The blot was incubated with anti-Rabbit IgG (Fc specific,Heavy Chain) antibody (Cat#52891, 1:1,000) and IRDye800CW goat anti-rabbit IgG secondary antibody respectively.