

**Catalog #: 52895**

## Aliases

CUL4B; Cullin 4B; Cullin-4B; CUL-4B; KIAA0695; MRXHF2; MRXS15; MRXSC; SFM2

## Background

Gene Name: CUL4B

NCBI Gene Entry: [8450](#)

UniProt Entry: [Q13620](#)

## Application Information

Molecular Weight: Predicted, 104 kDa; observed, 110 kDa

Clonality: Rabbit polyclonal antibody

Species Reactivity: Human, mouse, rat

Applications Tested: Western blotting (WB), immunohistochemistry (IHC), immunocytochemistry (IC)

## Immunogen

A synthesized peptide derived from human CUL4B

## Isotype

Rabbit IgG

## Storage Buffer

Supplied in PBS containing 50% glycerol, 0.5% BSA and 0.02% sodium azide.

## Storage

Store at -20 °C for one year.

## Recommended Dilutions

Western Blotting (WB): 1:500-1:2,000

Immunohistochemistry (IHC): 1:100-1:300

Immunocytochemistry (IC): 1:50-1:200

**Note:** This product is for research use only.

## Validation Data

---

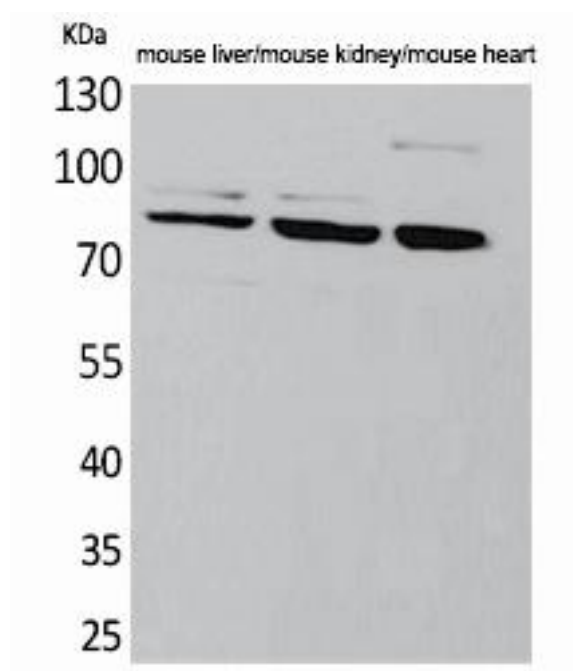
### SUPPORT

SUPPORT@GENUINBIOTECH.COM  
TEL: +1-540-855-7041

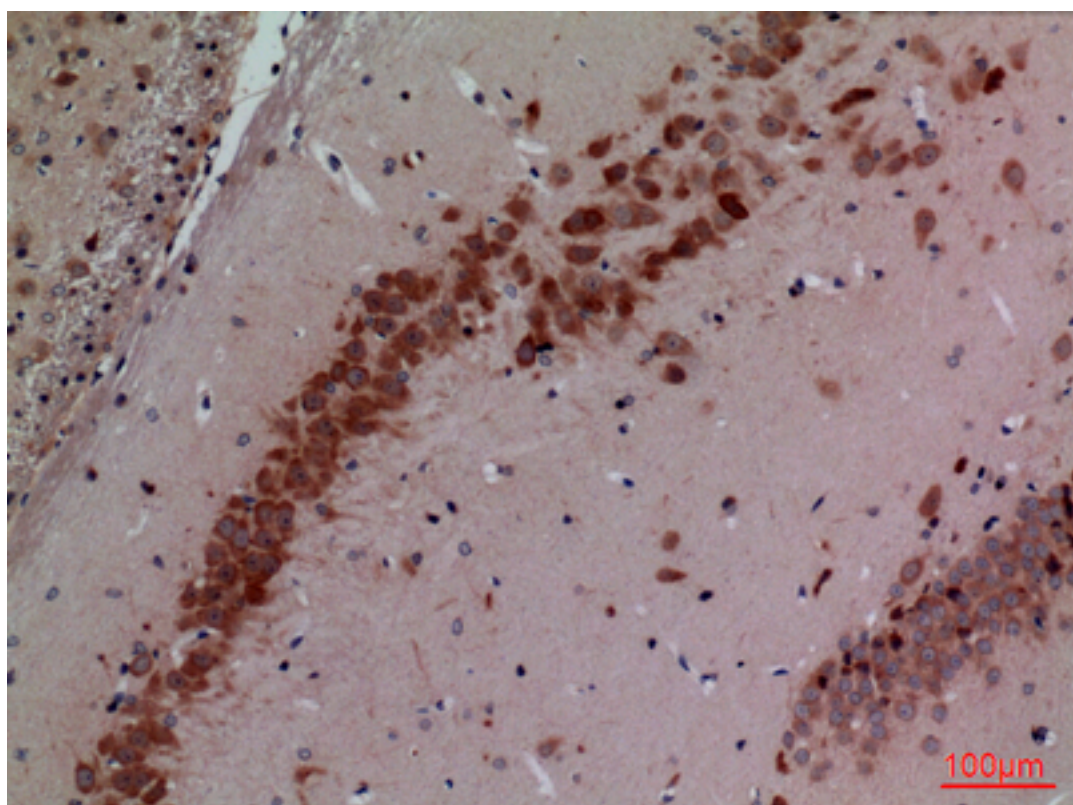
### ORDERS

SALES@GENUINBIOTECH.COM  
FAX: +1-540-855-7041

[WWW.GENUINBIOTECH.COM](http://WWW.GENUINBIOTECH.COM)



Western blotting analysis of mouse liver, mouse kidney, mouse heart cells using CUL4B antibody. Secondary antibody was diluted at 1:20,000.



Immunohistochemical analysis of paraffin-embedded rat-brain, antibody was diluted at 1:100.

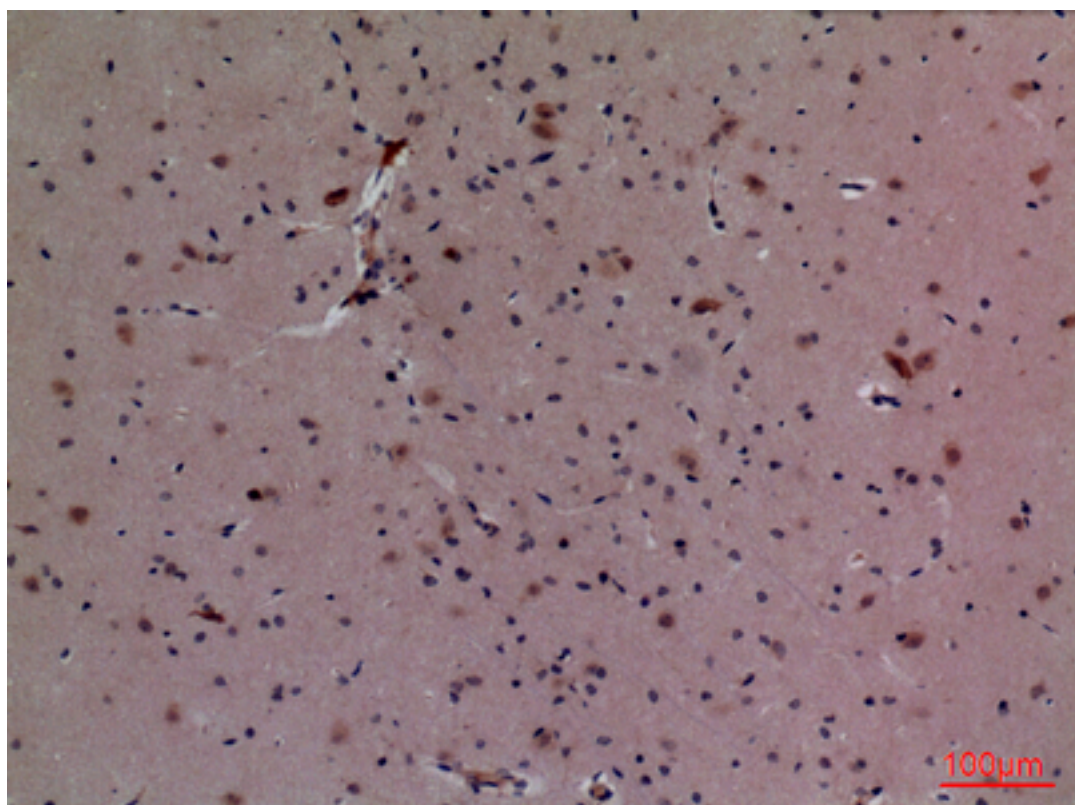
## SUPPORT

SUPPORT@GENUINBIOTECH.COM  
TEL: +1-540-855-7041

## ORDERS

SALES@GENUINBIOTECH.COM  
FAX: +1-540-855-7041

[WWW.GENUINBIOTECH.COM](http://WWW.GENUINBIOTECH.COM)



Immunohistochemical analysis of paraffin-embedded mouse-brain, antibody was diluted at 1:100.