

## Catalog #: 52905

### Aliases

LPCAT2; Lysophosphatidylcholine Acyltransferase 2; LysoPAFAT; AGPAT11; LPLAT9; AYTL1; Acetyl-CoA:Lyso-Platelet-Activating Factor Acetyltransferase; 1-Alkenylglycerophosphocholine O-Acyltransferase; 1-Alkylglycerophosphocholine O-Acetyltransferase; 1-Acylglycerol-3-Phosphate O-Acyltransferase 11; 1-Acylglycerophosphocholine O-Acyltransferase; Lysophosphatidic Acid Acyltransferase Alpha; Acetyl-CoA:Lyso-PAF Acetyltransferase; Lysophospholipid Acyltransferase 9; Lyso-PAF Acetyltransferase; 1-AGP Acyltransferase 11; LysoPC Acyltransferase 2; Acyltransferase-Like 1; LPC Acyltransferase 2; LPAAT-Alpha; EC 2.3.1.23; 1-AGPAT 11; FLJ20481; LPCAT-2; Lyso-Platelet-Activating Factor (PAF) Acetyltransferase; Acyl-CoA:Lysophosphatidylcholine Acyltransferase 2; EC 2.3.1.51; EC 2.3.1.25; EC 2.3.1.67; EC 2.3.1

### Background

Gene Name: LPCAT2

NCBI Gene Entry: [54947](#)

UniProt Entry: [Q7L5N7](#)

### Application Information

Molecular Weight: Predicted, 60 kDa; observed, 50,60 kDa

Clonality: Rabbit polyclonal antibody

Species Reactivity: Human, mouse

Applications Tested: Western blotting (WB), immunohistochemistry (IHC)

### Immunogen

A synthesized peptide derived from human LPCAT2

### Isotype

Rabbit IgG

### Storage Buffer

Supplied in PBS (pH 7.3) containing 30% glycerol, and 0.01% sodium azide.

### Storage

Store at -20 °C for one year.

### Recommended Dilutions

---

#### SUPPORT

SUPPORT@GENUINBIOTECH.COM  
TEL: +1-540-855-7041

#### ORDERS

SALES@GENUINBIOTECH.COM  
FAX: +1-540-855-7041

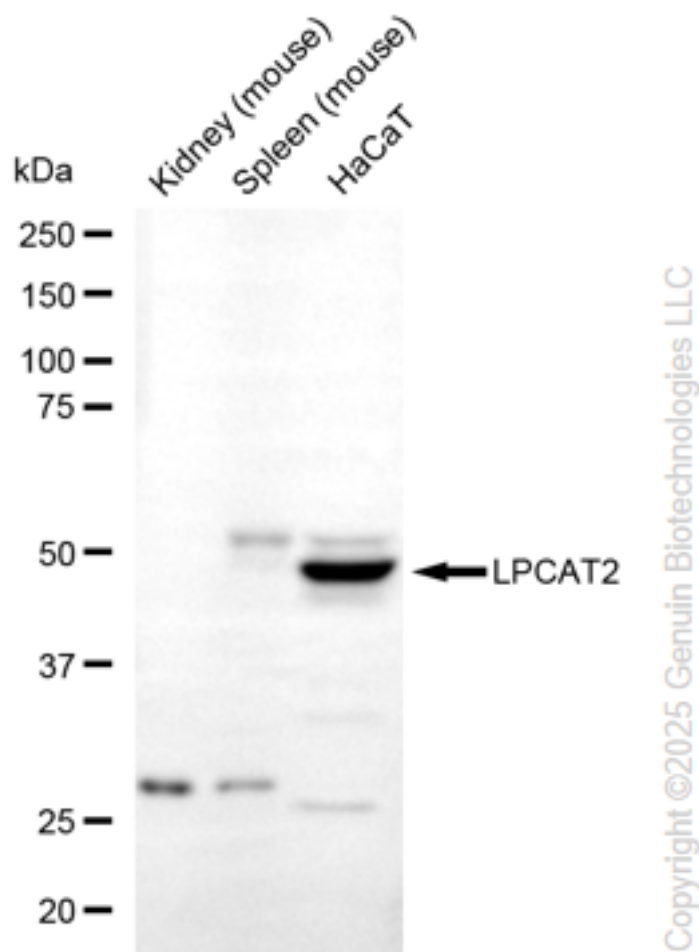
[WWW.GENUINBIOTECH.COM](http://WWW.GENUINBIOTECH.COM)

Western Blotting (WB): 1:500-1:2,500

Immunohistochemistry (IHC): 1:50-1:100

**Note:** This product is for research use only.

## Validation Data



Western blotting analysis using anti-LPCAT2 antibody (Cat#52905). Total lysates (30  $\mu$ g) were loaded and separated by SDS-PAGE. The blot was incubated with anti-LPCAT2 antibody (Cat#52905, 1:2,500) and HRP-conjugated goat anti-rabbit secondary antibody (Cat#201, 1:20,000) respectively. Image was developed using FeQ™ ECL Substrate Kit (Cat#226).

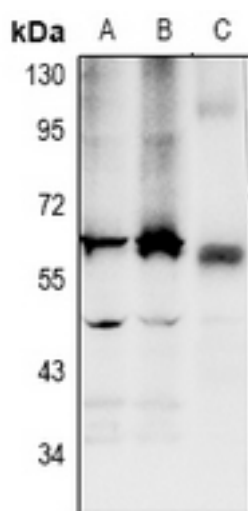
### SUPPORT

SUPPORT@GENUINBIOTECH.COM  
TEL: +1-540-855-7041

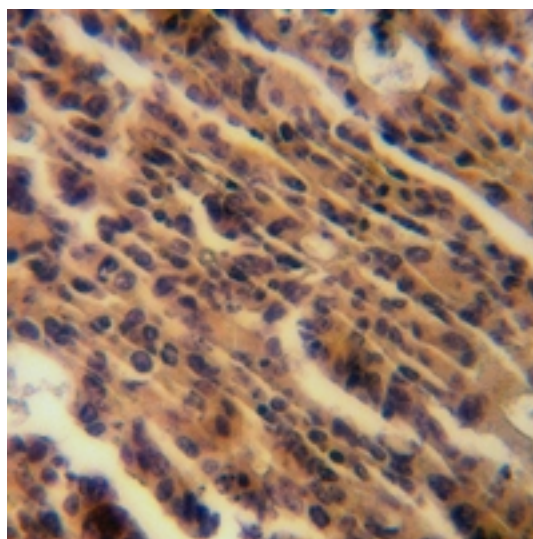
### ORDERS

SALES@GENUINBIOTECH.COM  
FAX: +1-540-855-7041

[WWW.GENUINBIOTECH.COM](http://WWW.GENUINBIOTECH.COM)



Western blotting analysis using anti-LPCAT2 antibody (Cat#52905). Total lysates were loaded and separated by SDS-PAGE. The blot was incubated with anti-LPCAT2 antibody (Cat#52905, 1:1,000) and secondary antibody respectively. HCT116 (A), DLD (B), mouse colon (C)



Immunohistochemical analysis of LPCAT2 staining in human colorectal cancer formalin fixed paraffin embedded tissue section. The section was pre-treated using heat mediated antigen retrieval with sodium citrate buffer (pH 6.0). The section was then incubated with the antibody at room temperature and detected using an HRP conjugated compact polymer system. DAB was used as the chromogen. The section was then counterstained with haematoxylin and mounted with DPX.