

Catalog #: 52907

Aliases

CCR1; C-C Motif Chemokine Receptor 1; MIP1aR; CMKBR1; SCYAR1; CKR-1; CD191; Macrophage Inflammatory Protein 1-Alpha Receptor; Chemokine (C-C Motif) Receptor 1; C-C Chemokine Receptor Type 1; LD78 Receptor; MIP-1alpha-R; C-C CKR-1; CC-CKR-1; RANTES-R; HM145; CCR-1; RANTES Receptor; CD191 Antigen; CMKR1; CKR1

Background

Gene Name: CCR1

NCBI Gene Entry: [1230](#)

UniProt Entry: [P32246](#)

Application Information

Molecular Weight: Predicted, 41 kDa; observed, 41 kDa

Clonality: Rabbit polyclonal antibody

Species Reactivity: Human, mouse, rat

Applications Tested: Western blotting (WB)

Immunogen

A synthesized peptide derived from human CCR1

Isotype

Rabbit IgG

Storage Buffer

Supplied in PBS containing 50% glycerol, and 0.02% sodium azide.

Storage

Store at -20 °C for one year.

Recommended Dilutions

Western Blotting (WB): 1:500-1:2,000

Note: This product is for research use only.

Validation Data

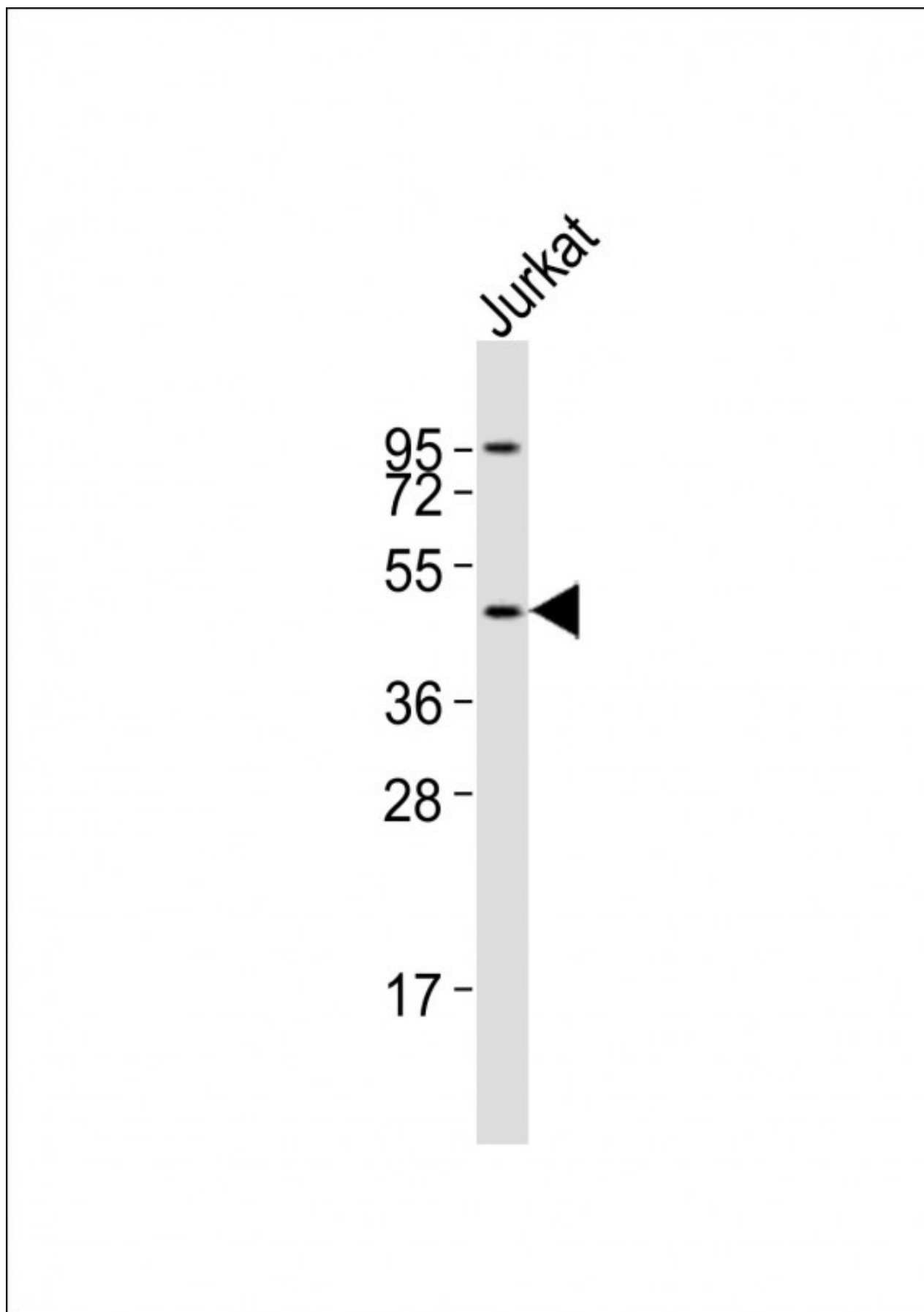
SUPPORT

SUPPORT@GENUINBIOTECH.COM
TEL: +1-540-855-7041

ORDERS

SALES@GENUINBIOTECH.COM
FAX: +1-540-855-7041

WWW.GENUINBIOTECH.COM



Western blotting analysis using anti-CCR1 antibody (Cat#52907). Total lysates were loaded and separated by SDS-PAGE. The blot was incubated with anti-CCR1 antibody (Cat#52907, 1:2,000) and secondary antibody respectively.