

Catalog #: 52913

Aliases

NCL; Nucleolin; Nsr1; C23; Protein C23

Background

Gene Name: NCL

NCBI Gene Entry: [4691](#)

UniProt Entry: [P19338](#)

Application Information

Molecular Weight: Predicted, 77 kDa; observed, 110 kDa

Clonality: Rabbit monoclonal antibody

Clone ID: 25GB7475

Species Reactivity: Human, mouse

Applications Tested: Western blotting (WB), immunohistochemistry (IHC), immunocytochemistry (IC), immunoprecipitation (IP)

Isotype

Rabbit IgG,Kappa

Storage Buffer

Supplied in PBS containing 50% glycerol, 0.05% BSA and 0.05% Proclin 300.

Storage

Store at -20 °C for one year.

Recommended Dilutions

Western Blotting (WB): 1:500-1:2,000

Immunohistochemistry (IHC): 1:200-1:1,000

Immunocytochemistry (IC): 1:200-1:1,000

Immunoprecipitation (IP): 1:50-1:200

Note: This product is for research use only.

Validation Data

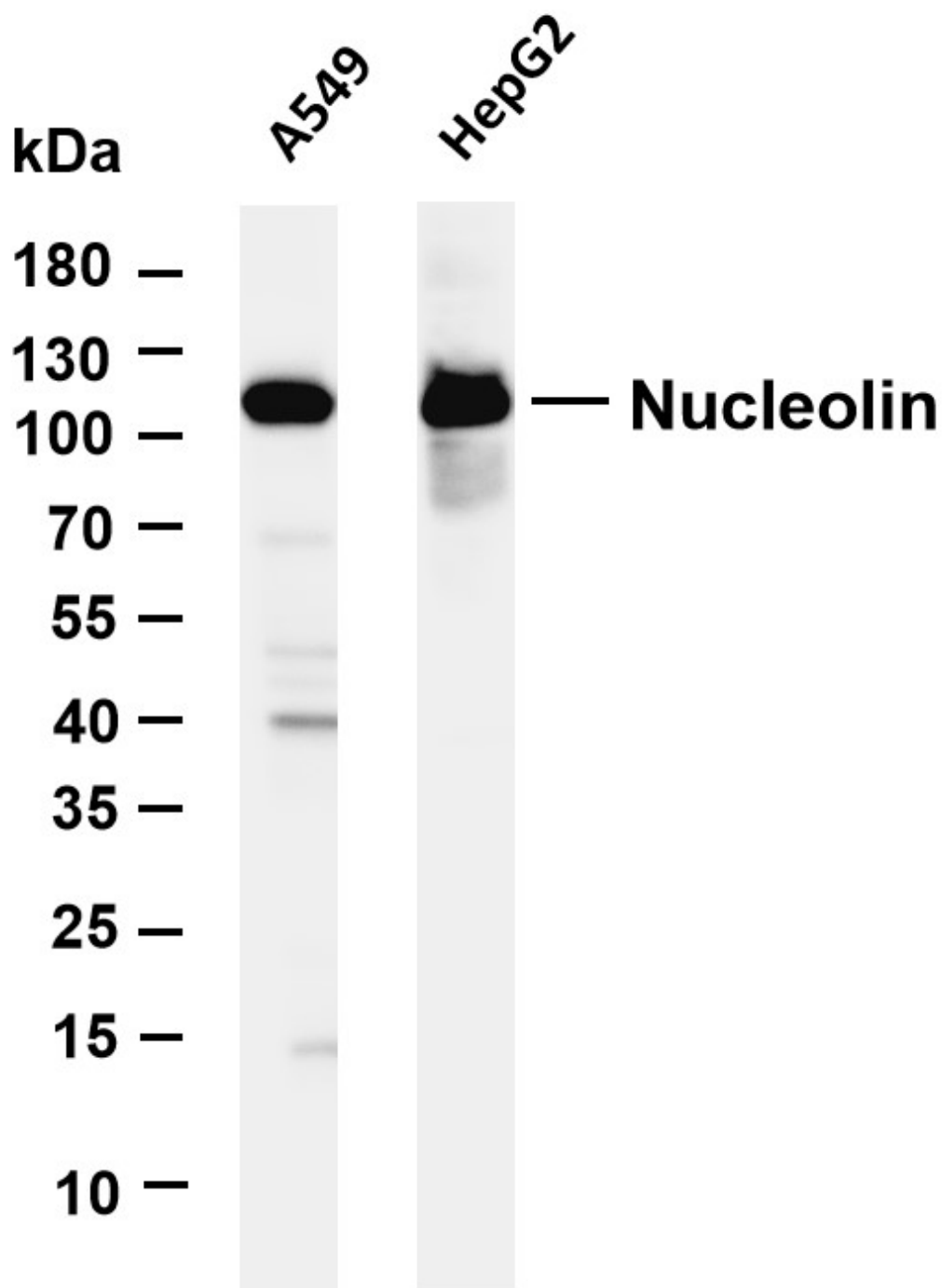
SUPPORT

SUPPORT@GENUINBIOTECH.COM
TEL: +1-540-855-7041

ORDERS

SALES@GENUINBIOTECH.COM
FAX: +1-540-855-7041

WWW.GENUINBIOTECH.COM



Western blotting analysis using anti-Nucleolin antibody (Cat#52913). Total lysates were loaded and separated by SDS-PAGE. The blot was incubated with anti-Nucleolin antibody (Cat#52913) and secondary antibody respectively.

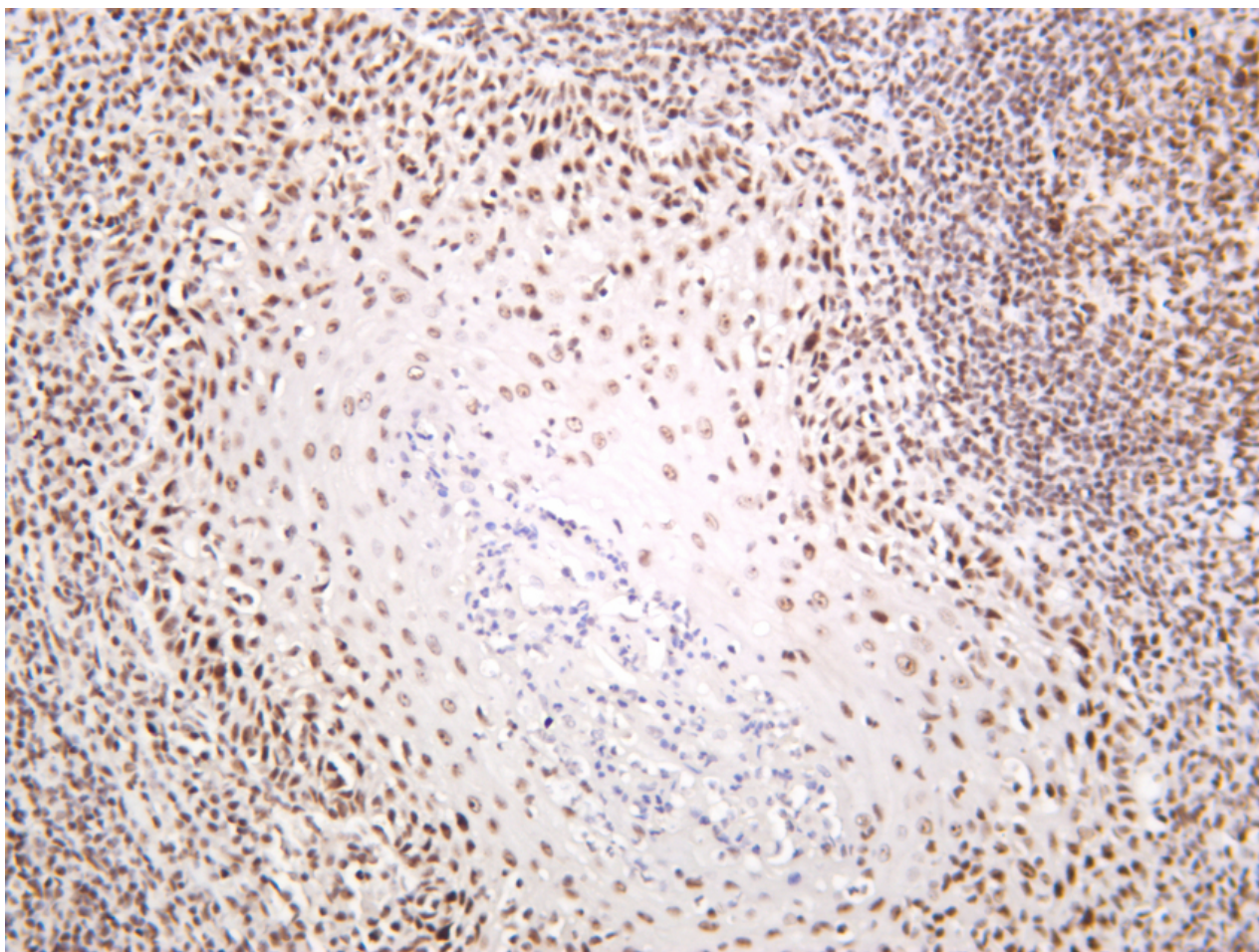
SUPPORT

SUPPORT@GENUINBIOTECH.COM
TEL: +1-540-855-7041

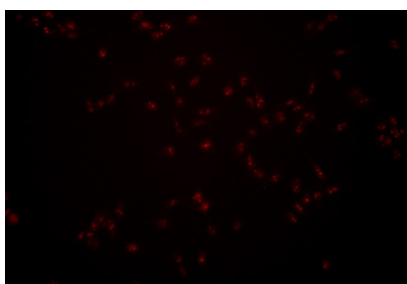
ORDERS

SALES@GENUINBIOTECH.COM
FAX: +1-540-855-7041

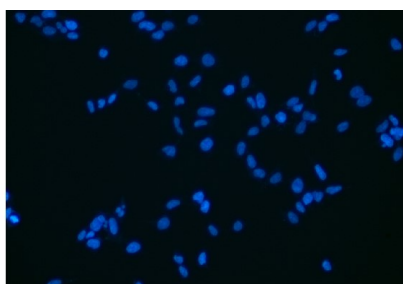
WWW.GENUINBIOTECH.COM



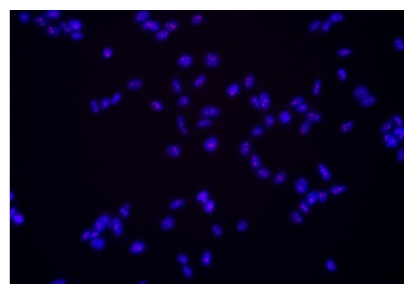
Immunohistochemical analysis of paraffin-embedded human tonsil; Samples were incubated with Nucleolin antibody (Cat#52913).



A



B



C

Immunocytochemical analysis of HEK293. Picture A: Nucleolin antibody (red). Picture B: DAPI (blue). Picture C: Merge of A+B

SUPPORT

SUPPORT@GENUINBIOTECH.COM
TEL: +1-540-855-7041

ORDERS

SALES@GENUINBIOTECH.COM
FAX: +1-540-855-7041

WWW.GENUINBIOTECH.COM