

Catalog #: 5296

Aliases

RECQL; RecQ Like Helicase; RecQ1; RECQL1; RecQ Protein-Like (DNA Helicase Q1-Like); DNA Helicase, RecQ-Like Type 1; ATP-Dependent DNA Helicase Q1; DNA-Dependent ATPase Q1; DNA 3'-5' Helicase Q1; RecQ Protein-Like 1; RecQ Helicase-Like; DNA Helicase Q1-Like; EC 5.6.2.4; EC 3.6.1; RECQL1; RECON; RECQ1

Background

Gene Name: RECQL

NCBI Gene Entry: [5965](#)

UniProt Entry: [P46063](#)

Application Information

Molecular Weight: Predicted, 73 kDa; observed, 70 kDa

Clonality: Mouse oligoclonal antibody

Species Reactivity: Human

Applications Tested: Western blotting (WB), flow cytometry (FCM), immunocytochemistry (IC)

Immunogen

Recombinant protein of human RECQL

Isotype

Mouse IgG

Storage Buffer

Supplied in PBS (pH 7.4) containing 50% glycerol, and 0.02% sodium azide.

Storage

Store at -20 °C for one year.

Recommended Dilutions

Western Blotting (WB): 1:500-1:2,500

Flow Cytometry (FCM): 1:2,000

Immunocytochemistry (IC): 1:100-1:1,000

Note: This product is for research use only.

SUPPORT

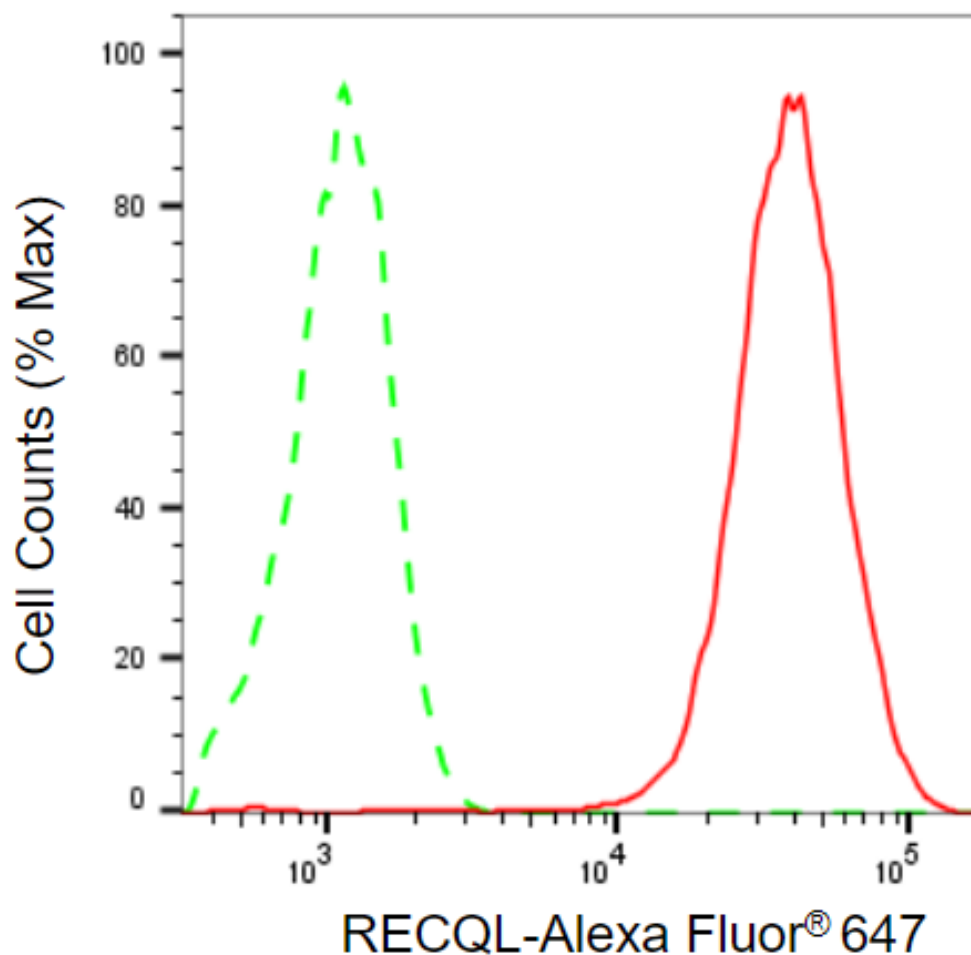
SUPPORT@GENUINBIOTECH.COM
TEL: +1-540-855-7041

ORDERS

SALES@GENUINBIOTECH.COM
FAX: +1-540-855-7041

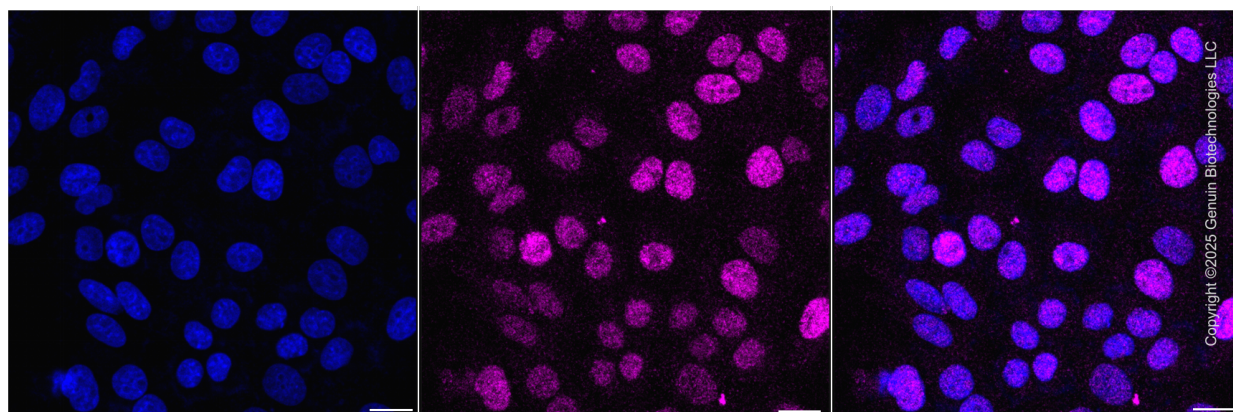
WWW.GENUINBIOTECH.COM

Validation Data



Copyright ©2025 Genuin Biotechnologies LLC

Flow cytometric analysis of RECQL expression in HepG2 cells using anti-RECQL antibody (Cat#5296, 1:2,000). Green, isotype control; red, RECQL.



SUPPORT

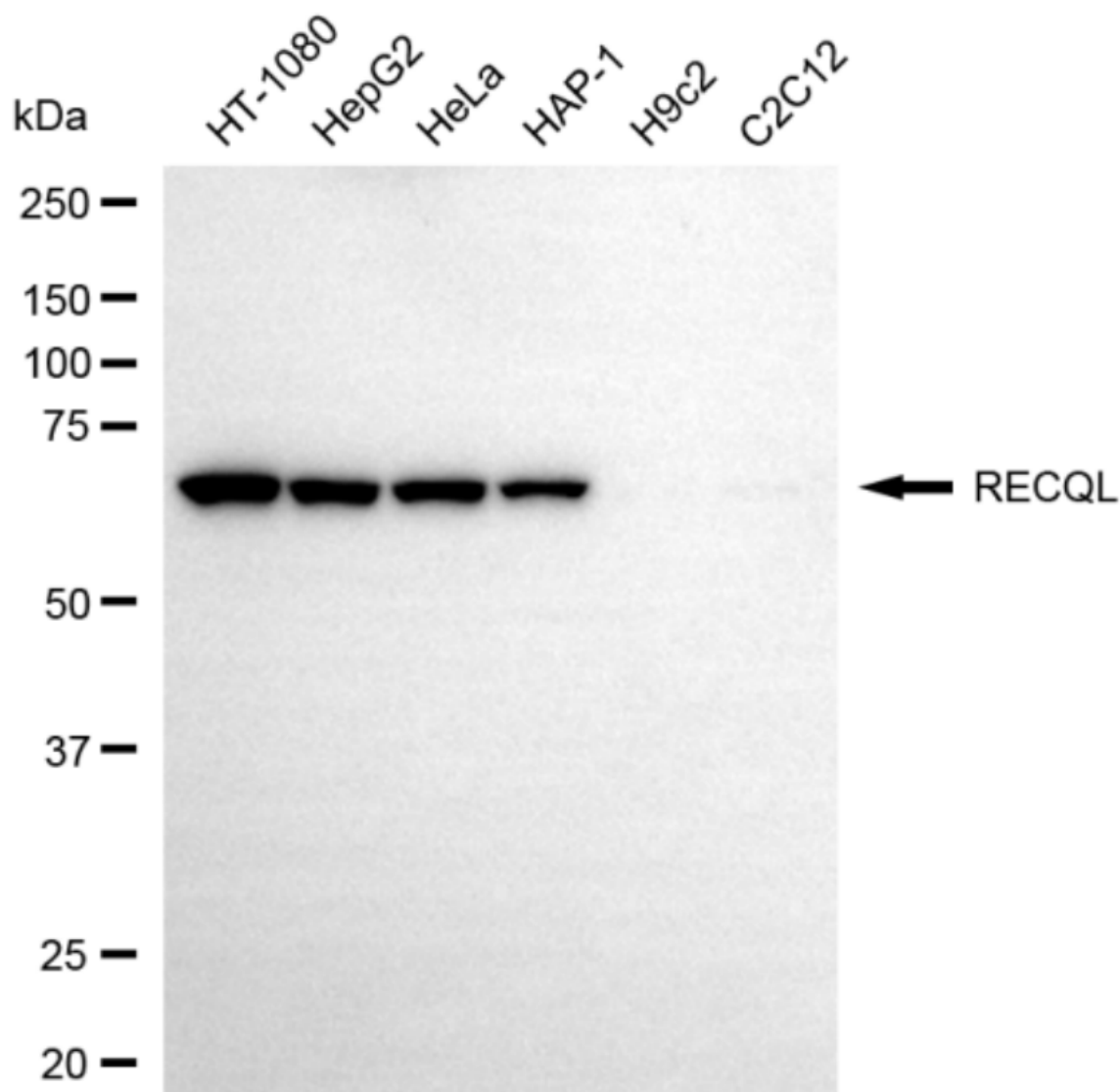
SUPPORT@GENUINBIOTECH.COM
TEL: +1-540-855-7041

ORDERS

SALES@GENUINBIOTECH.COM
FAX: +1-540-855-7041

WWW.GENUINBIOTECH.COM

Immunocytochemical staining of HepG2 cells with anti-RECQL antibody (Cat#5296, 1:1,000) . Nuclei were stained blue with DAPI; RECQL was stained magenta with Alexa Fluor® 647. Images were taken using Leica stellaris 5. Protein abundance based on laser Intensity and smart gain: Low. Scale bar, 20 µm.



Copyright ©2025 Genuin Biotechnologies LLC

Western blotting analysis using anti-RECQL antibody (Cat#5296). Total cell lysates (30 µg) from various cell lines were loaded and separated by SDS-PAGE. The blot was incubated with anti-RECQL antibody (Cat#5296, 1:2,500) and HRP-conjugated goat anti-mouse secondary antibody (Cat#101, 1:20,000) respectively. Image was developed using FeQ™ ECL Substrate Kit (Cat#226).