

Catalog #: 5297

Aliases

PDXDC1; Pyridoxal Dependent Decarboxylase Domain Containing 1; KIAA0251; Pyridoxal-Dependent Decarboxylase Domain-Containing Protein 1; EC 4.1.1.50; EC 4.1.1.- ; EC 4.1.1; LP8165

Background

Gene Name: PDXDC1

NCBI Gene Entry: [23042](#)

UniProt Entry: [Q6P996](#)

Application Information

Molecular Weight: Predicted, 87 kDa; observed, 75 kDa

Clonality: Mouse oligoclonal antibody

Species Reactivity: Human

Applications Tested: Western blotting (WB), flow cytometry (FCM), immunocytochemistry (IC)

Immunogen

Recombinant protein of human PDXDC1

Isotype

Mouse IgG

Storage Buffer

Supplied in PBS (pH 7.4) containing 50% glycerol, and 0.02% sodium azide.

Storage

Store at -20 °C for one year.

Recommended Dilutions

Western Blotting (WB): 1:500-1:2,500

Flow Cytometry (FCM): 1:2,000

Immunocytochemistry (IC): 1:100-1:1,000

Note: This product is for research use only.

Validation Data

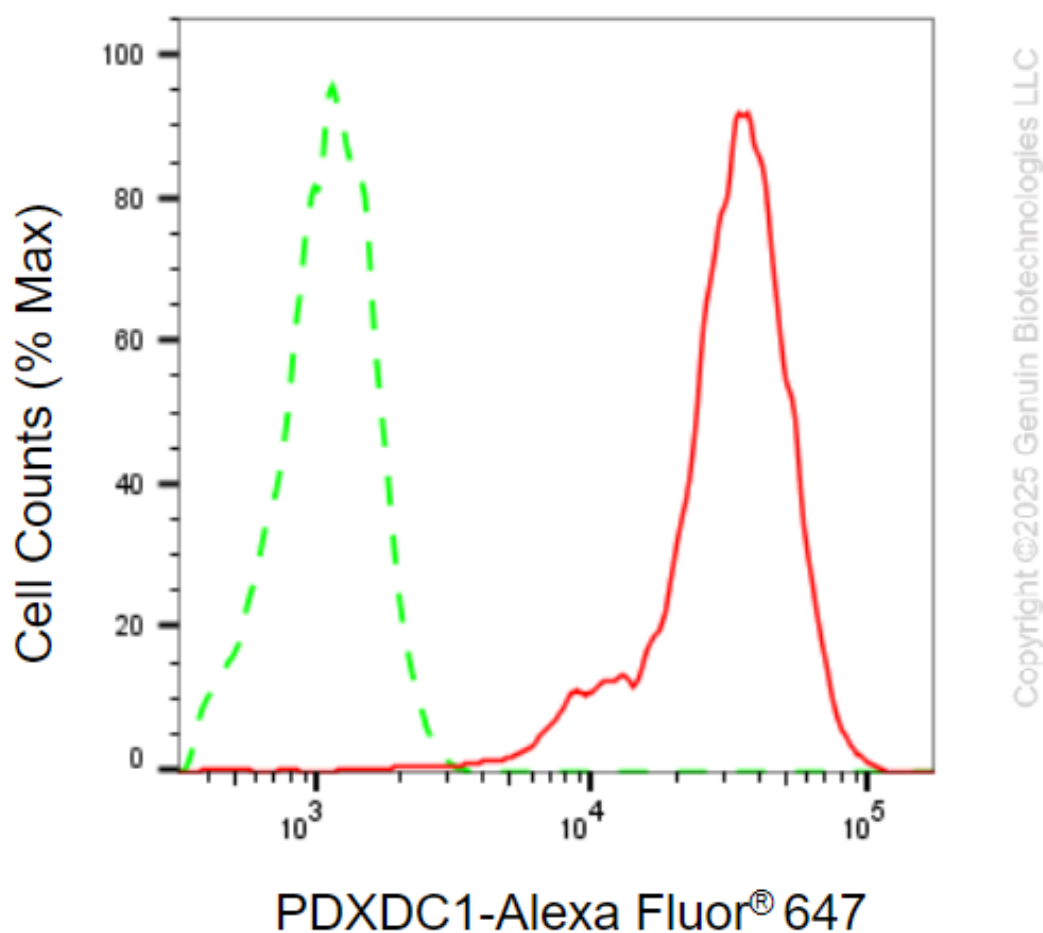
SUPPORT

SUPPORT@GENUINBIOTECH.COM
TEL: +1-540-855-7041

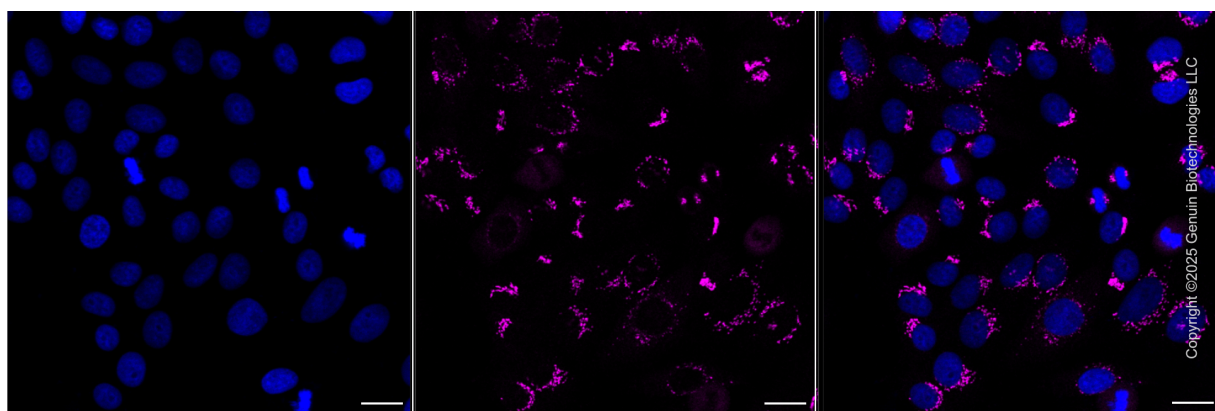
ORDERS

SALES@GENUINBIOTECH.COM
FAX: +1-540-855-7041

WWW.GENUINBIOTECH.COM



Flow cytometric analysis of PDXDC1 expression in HepG2 cells using anti-PDXDC1 antibody (Cat#5297, 1:2,000). Green, isotype control; red, PDXDC1.



Immunocytochemical staining of HepG2 cells with anti-PDXDC1 antibody (Cat#5297, 1:1,000). Nuclei were stained blue with DAPI; PDXDC1 was stained magenta with Alexa Fluor® 647.

SUPPORT

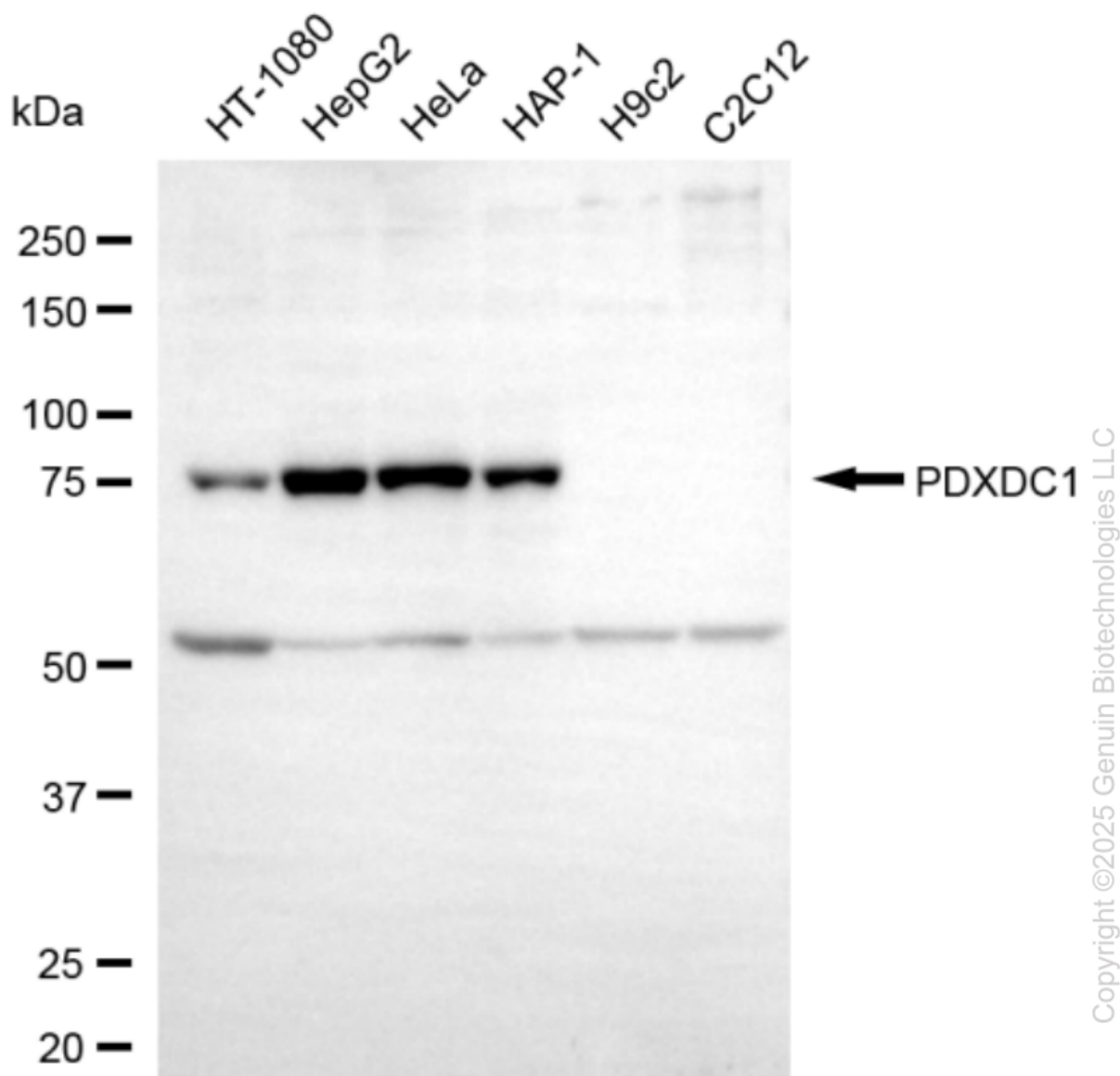
SUPPORT@GENUINBIOTECH.COM
TEL: +1-540-855-7041

ORDERS

SALES@GENUINBIOTECH.COM
FAX: +1-540-855-7041

WWW.GENUINBIOTECH.COM

Images were taken using Leica stellaris 5. Protein abundance based on laser Intensity and smart gain: Medium. Scale bar, 20 μ m.



Western blotting analysis using anti-PDXDC1 antibody (Cat#5297). Total cell lysates (30 μ g) from various cell lines were loaded and separated by SDS-PAGE. The blot was incubated with anti-PDXDC1 antibody (Cat#5297, 1:2,500) and HRP-conjugated goat anti-mouse secondary antibody (Cat#101, 1:20,000) respectively. Image was developed using FeQ™ ECL Substrate Kit (Cat#226).

SUPPORT

SUPPORT@GENUINBIOTECH.COM
TEL: +1-540-855-7041

ORDERS

SALES@GENUINBIOTECH.COM
FAX: +1-540-855-7041

WWW.GENUINBIOTECH.COM