

Catalog #: 5306

Aliases

LAS1; LAS1 Like Ribosome Biogenesis Factor; Las1; Ribosomal Biogenesis Protein LAS1L; Endoribonuclease LAS1L; Protein LAS1 Homolog; FLJ12525; LAS1-Like (S. Cerevisiae); EC 3.1.-.-; Las1-Like; DJ475B7.2; MRXSWTS; WTS

Background

Gene Name: LAS1L

NCBI Gene Entry: [81887](#)

UniProt Entry: [Q9Y4W2](#)

Application Information

Molecular Weight: Predicted, 83 kDa; observed, 88 kDa

Clonality: Mouse oligoclonal antibody

Species Reactivity: Human

Applications Tested: Western blotting (WB), flow cytometry (FCM), immunocytochemistry (IC)

Immunogen

Recombinant protein of human LAS1L

Isotype

Mouse IgG

Storage Buffer

Supplied in PBS (pH 7.4) containing 50% glycerol, and 0.02% sodium azide.

Storage

Store at -20 °C for one year.

Recommended Dilutions

Western Blotting (WB): 1:500-1:2,500

Flow Cytometry (FCM): 1:2,000

Immunocytochemistry (IC): 1:100-1:1,000

Note: This product is for research use only.

Validation Data

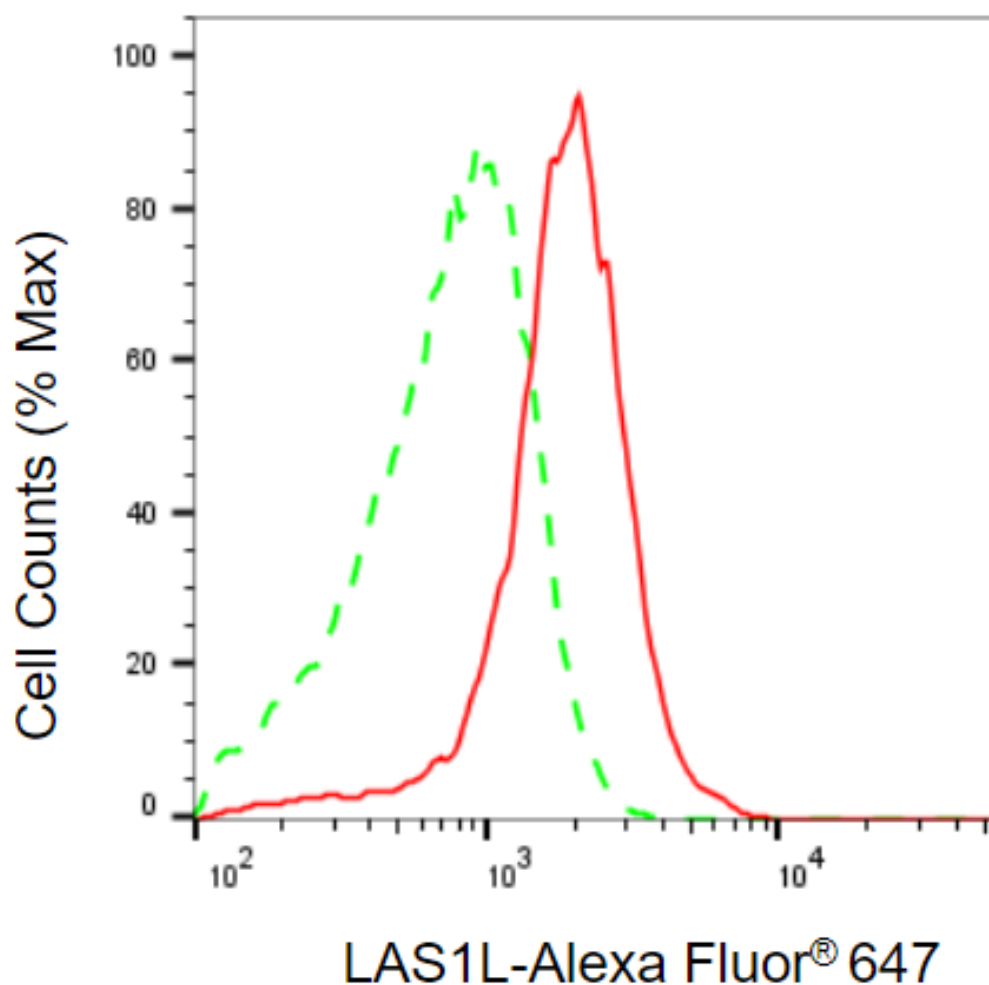
SUPPORT

SUPPORT@GENUINBIOTECH.COM
TEL: +1-540-855-7041

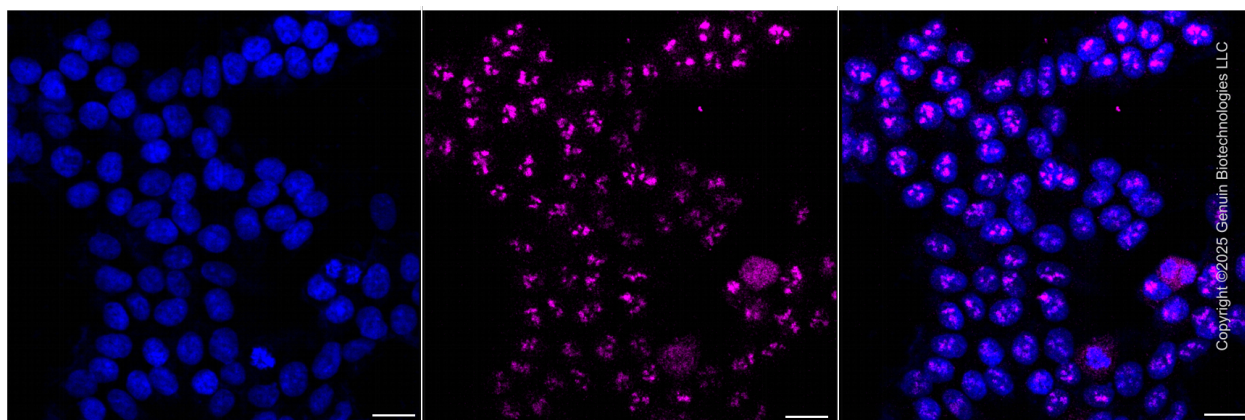
ORDERS

SALES@GENUINBIOTECH.COM
FAX: +1-540-855-7041

WWW.GENUINBIOTECH.COM



Flow cytometric analysis of LAS1L expression in HAP-1 cells using anti-LAS1L antibody (Cat#5306, 1:2,000). Green, isotype control; red, LAS1L.



Immunocytochemical staining of HAP-1 cells with anti-LAS1L antibody (Cat#5306, 1:1,000). Nuclei were stained blue with DAPI; LAS1L was stained magenta with Alexa Fluor® 647. Images

SUPPORT

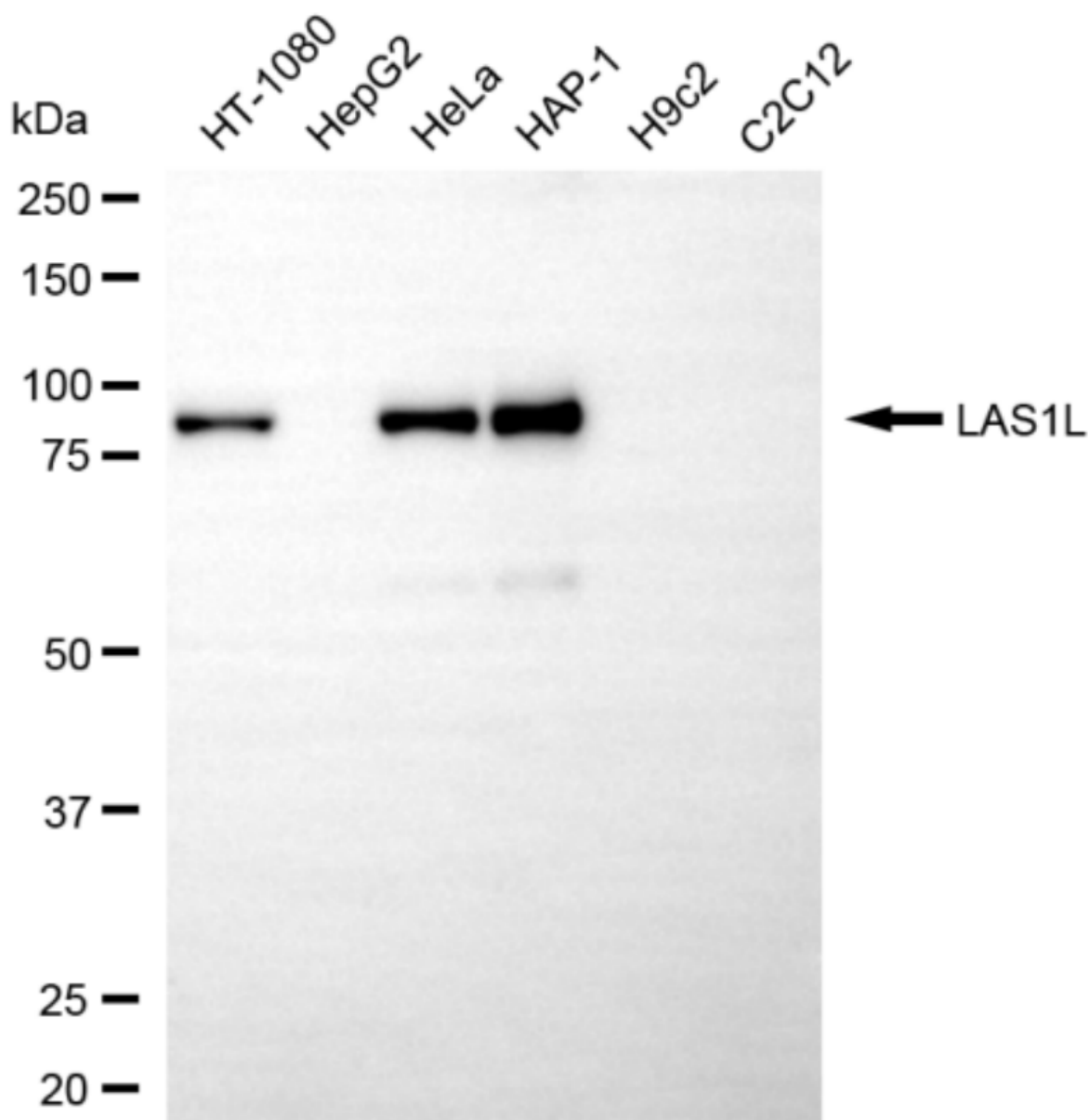
SUPPORT@GENUINBIOTECH.COM
TEL: +1-540-855-7041

ORDERS

SALES@GENUINBIOTECH.COM
FAX: +1-540-855-7041

WWW.GENUINBIOTECH.COM

were taken using Leica stellaris 5. Protein abundance based on laser Intensity and smart gain:Low . Scale bar, 20 μ m.



Copyright ©2025 Genuin Biotechnologies LLC

Western blotting analysis using anti-LAS1L antibody (Cat#5306). Total cell lysates (30 μ g) from various cell lines were loaded and separated by SDS-PAGE. The blot was incubated with anti-LAS1L antibody (Cat#5306, 1:2,500) and HRP-conjugated goat anti-mouse secondary antibody (Cat#101, 1:20,000) respectively. Image was developed using FeQ™ ECL Substrate Kit (Cat#226).

SUPPORT

SUPPORT@GENUINBIOTECH.COM
TEL: +1-540-855-7041

ORDERS

SALES@GENUINBIOTECH.COM
FAX: +1-540-855-7041

WWW.GENUINBIOTECH.COM