

Catalog #: 5307

Aliases

METTL2A; Methyltransferase 2A, TRNA N3-Cytidine; METTL2; TRNA N(3)-Methylcytidine Methyltransferase METTL2A; Methyltransferase 2A, Methylcytidine; Methyltransferase-Like Protein 2A; Methyltransferase Like 2A; FLJ12760; EC 2.1.1.-

Background

Gene Name: METTL2A

NCBI Gene Entry: [339175](#)

UniProt Entry: [Q96IZ6](#)

Application Information

Molecular Weight: Predicted, 44 kDa; observed, 40 kDa

Clonality: Mouse oligoclonal antibody

Species Reactivity: Human, rat

Applications Tested: Western blotting (WB)

Immunogen

Recombinant protein of human METTL2A

Isotype

Mouse IgG

Storage Buffer

Supplied in PBS (pH 7.4) containing 50% glycerol, and 0.02% sodium azide.

Storage

Store at -20 °C for one year.

Recommended Dilutions

Western Blotting (WB): 1:500-1:2,500

Note: This product is for research use only.

Validation Data

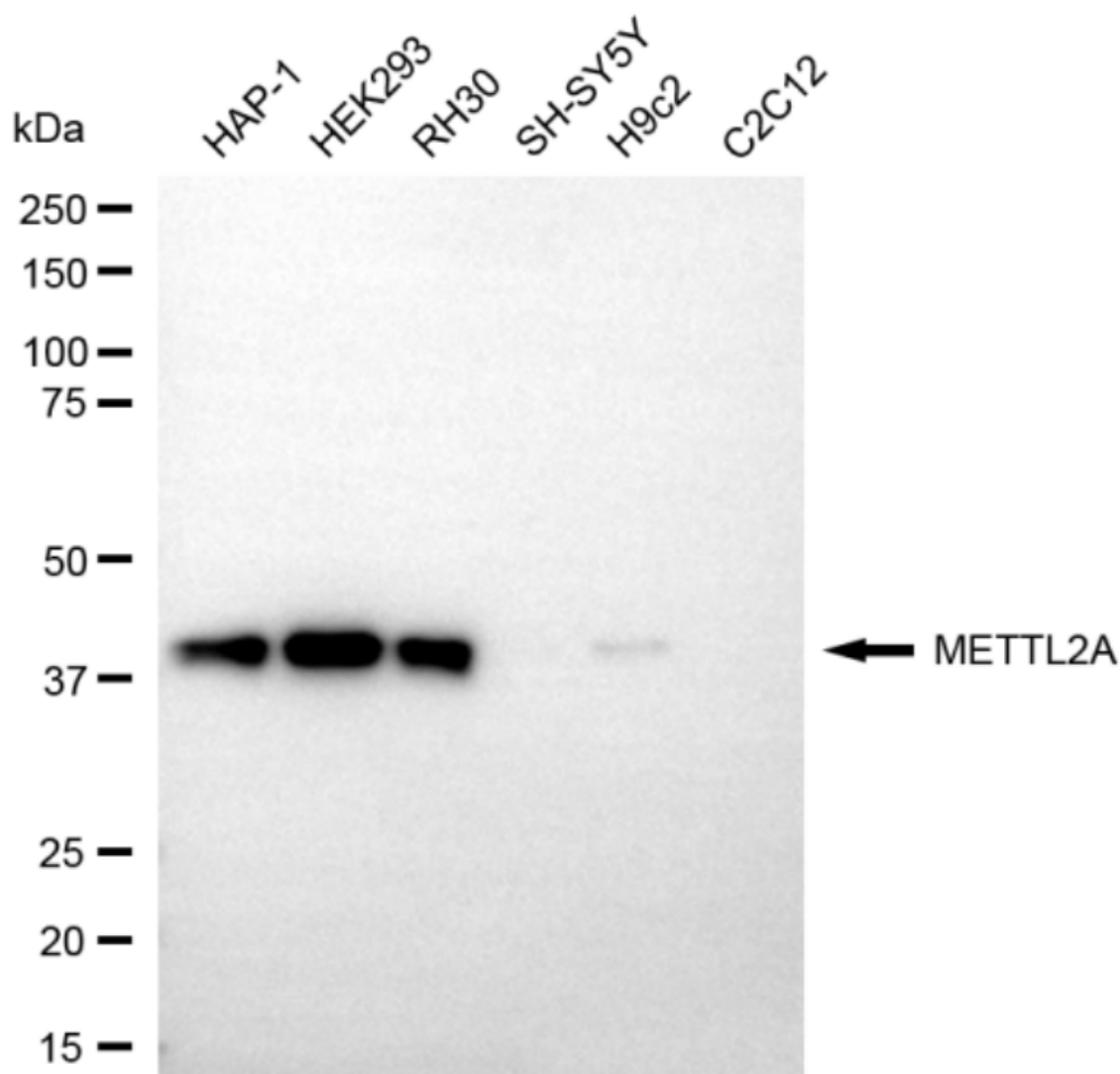
SUPPORT

SUPPORT@GENUINBIOTECH.COM
TEL: +1-540-855-7041

ORDERS

SALES@GENUINBIOTECH.COM
FAX: +1-540-855-7041

WWW.GENUINBIOTECH.COM



Copyright ©2025 Genuin Biotechnologies LLC

Western blotting analysis using anti-METTL2A antibody (Cat#5307). Total cell lysates (30 µg) from various cell lines were loaded and separated by SDS-PAGE. The blot was incubated with anti-METTL2A antibody (Cat#5307, 1:2,500) and HRP-conjugated goat anti-mouse secondary antibody (Cat#101, 1:20,000) respectively. Image was developed using FeQ™ ECL Substrate Kit (Cat#226).

SUPPORT

SUPPORT@GENUINBIOTECH.COM
TEL: +1-540-855-7041

ORDERS

SALES@GENUINBIOTECH.COM
FAX: +1-540-855-7041

WWW.GENUINBIOTECH.COM