

## Catalog #: 5312

### Aliases

TBC1D4; TBC1 Domain Family Member 4; AS160; Akt Substrate Of 160 KDa; KIAA0603; DKFZp779C0666; TBC (Tre-2, BUB2, CDC16) Domain-Containing Protein; TBC1 Domain Family, Member 4; NIDDM5

### Background

Gene Name: TBC1D4

NCBI Gene Entry: [9882](#)

UniProt Entry: [O60343](#)

### Application Information

Molecular Weight: Predicted, 147 kDa; observed, 180 kDa

Clonality: Rabbit monoclonal antibody

Clone ID: 25GB890

Species Reactivity: Human, mouse

Applications Tested: Western blotting (WB), flow cytometry (FCM), immunocytochemistry (IC)

### Immunogen

Recombinant protein of human TBC1D4

### Isotype

Rabbit IgG

### Storage Buffer

Supplied in PBS (pH 7.4) containing 50% glycerol, and 0.02% sodium azide.

### Storage

Store at -20 °C for one year.

### Recommended Dilutions

Western Blotting (WB): 1:1,000-1:5,000

Flow Cytometry (FCM): 1:2,000

Immunocytochemistry (IC): 1:100-1:1,000

**Note:** This product is for research use only.

---

#### SUPPORT

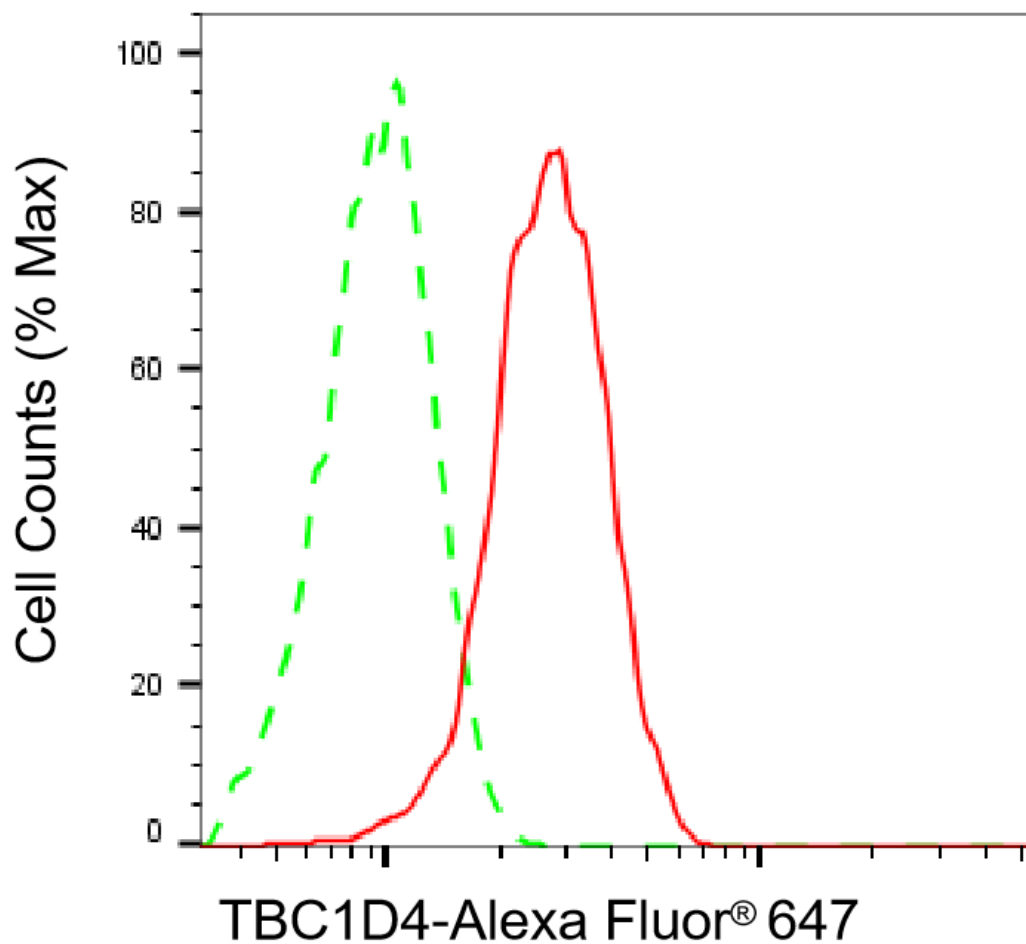
SUPPORT@GENUINBIOTECH.COM  
TEL: +1-540-855-7041

#### ORDERS

SALES@GENUINBIOTECH.COM  
FAX: +1-540-855-7041

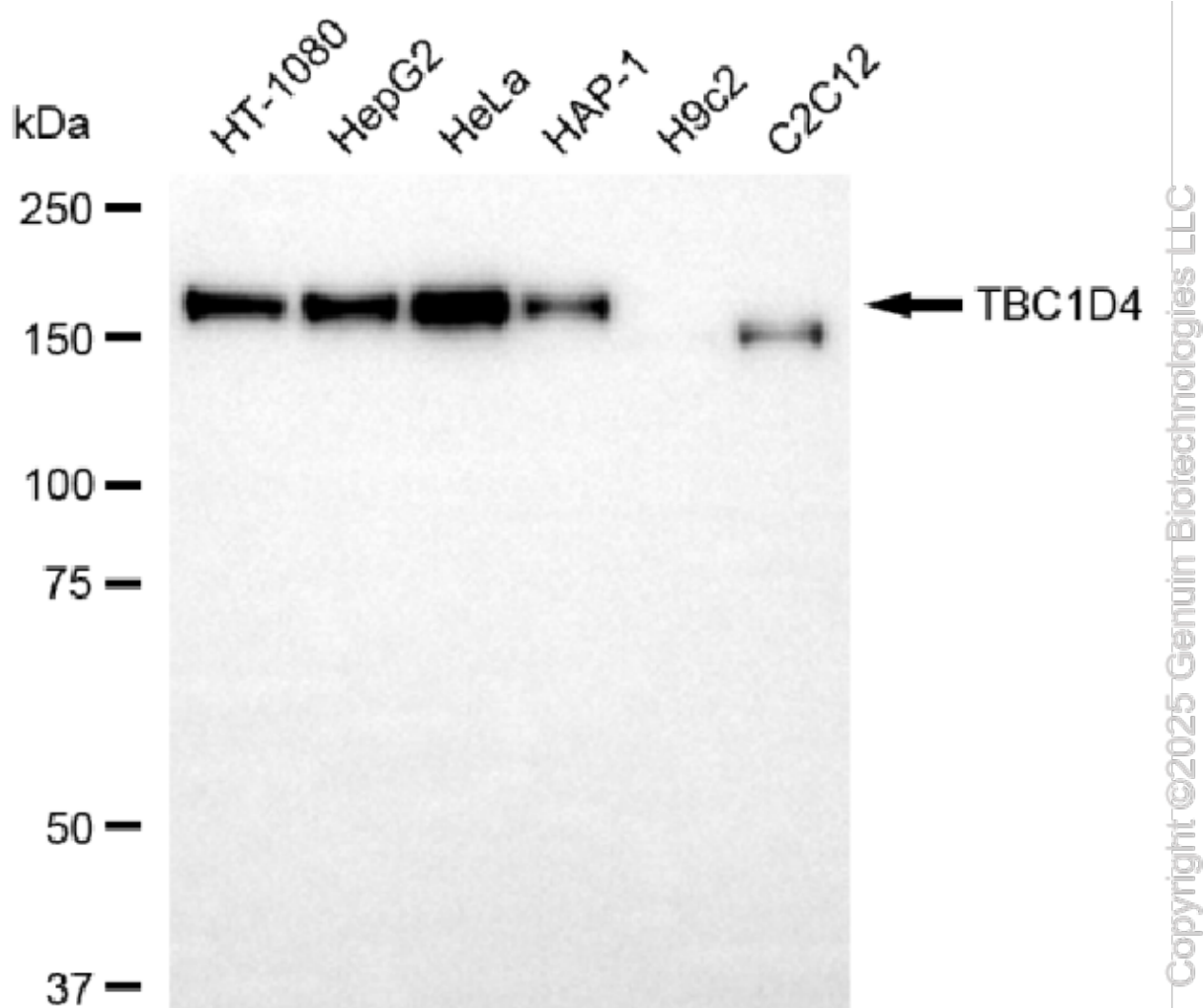
[WWW.GENUINBIOTECH.COM](http://WWW.GENUINBIOTECH.COM)

## Validation Data

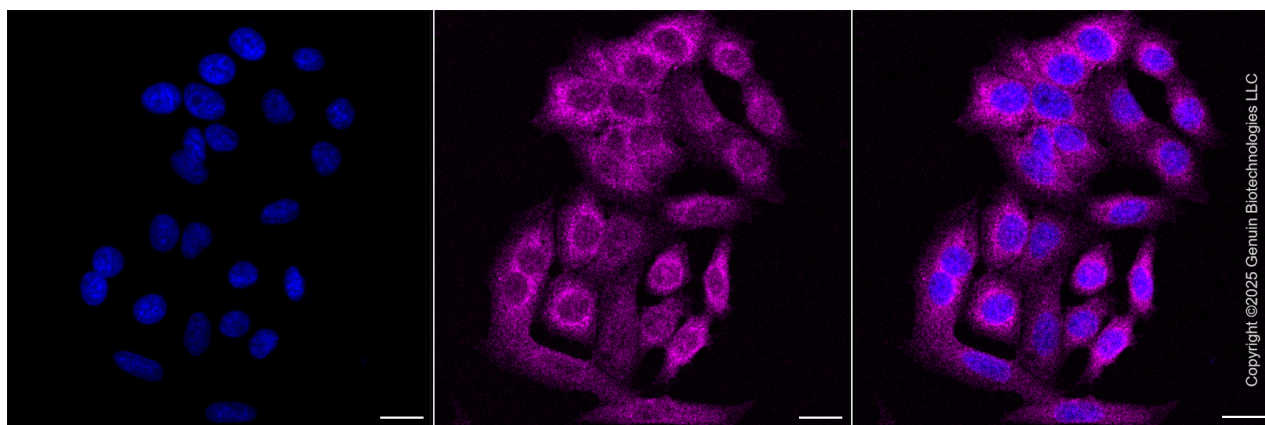


Copyright ©2025 Genuin Biotechnologies LLC

Flow cytometric analysis of TBC1D4 expression in HepG2 cells using anti-TBC1D4 antibody (Cat#5312, 1:2,000). Green, isotype control; red, TBC1D4.



Western blotting analysis using anti-TBC1D4 antibody (Cat#5312). Total cell lysates (30  $\mu$ g) from various cell lines were loaded and separated by SDS-PAGE. The blot was incubated with anti-TBC1D4 antibody (Cat#5312, 1:5,000) and HRP-conjugated goat anti-rabbit secondary antibody (Cat#201, 1:20,000) respectively. Image was developed using NaQ™ ECL Substrate Kit (Cat#716).

**SUPPORT**

SUPPORT@GENUINBIOTECH.COM  
TEL: +1-540-855-7041

**ORDERS**

SALES@GENUINBIOTECH.COM  
FAX: +1-540-855-7041

[WWW.GENUINBIOTECH.COM](http://WWW.GENUINBIOTECH.COM)

Immunocytochemical staining of HepG2 cells with anti-TBC1D4 antibody (Cat#5312, 1:1,000) . Nuclei were stained blue with DAPI; TBC1D4 was stained magenta with Alexa Fluor® 647. Images were taken using Leica stellaris 5. Protein abundance based on laser Intensity and smart gain: Medium. Scale bar, 20  $\mu$ m.