

Anti-Phospho-CD18 (S745) Rabbit Monoclonal Antibody



Catalog #: 5313

Aliases

ITGB2; Integrin Subunit Beta 2; LFA-1; MAC-1; CD18; MFI7; Integrin, Beta 2 (Complement Component 3 Receptor 3 And 4 Subunit); Complement Component 3 Receptor 3 And 4 Subunit; Integrin Beta-2; Integrin, Beta 2 (Antigen CD18 (P95), Lymphocyte Function-Associated Antigen 1; Macrophage Antigen 1 (Mac-1) Beta Subunit); Cell Surface Adhesion Glycoprotein (LFA-1/CR3/P150,959 Beta Subunit Precursor); Cell Surface Adhesion Glycoproteins LFA-1/CR3/P150,95 Subunit Beta; Leukocyte-Associated Antigens CD18/11A, CD18/11B, CD18/11C; Leukocyte Cell Adhesion Molecule CD18; Complement Receptor C3 Beta-Subunit; Complement Receptor C3 Subunit Beta; Integrin Beta Chain, Beta 2; CD18 Antigen; LCAMB; MF17; LAD

Background

Gene Name: ITGB2

NCBI Gene Entry: [3689](#)

UniProt Entry: [P05107](#)

Application Information

Molecular Weight: Predicted, 85 kDa; observed, 90 kDa

Clonality: Rabbit monoclonal antibody

Clone ID: 25GB895

Species Reactivity: Human, mouse, rat

Applications Tested: Western blotting (WB)

Immunogen

A synthesized peptide derived from human Phospho-CD18 (Ser745)

Isotype

Rabbit IgG

Storage Buffer

Supplied in PBS (pH 7.4) containing 50% glycerol, and 0.02% sodium azide.

Storage

Store at -20 °C for one year.

Recommended Dilutions

Western Blotting (WB): 1:1,000-1:5,000

SUPPORT

SUPPORT@GENUINBIOTECH.COM
TEL: +1-540-855-7041

ORDERS

SALES@GENUINBIOTECH.COM
FAX: +1-540-855-7041

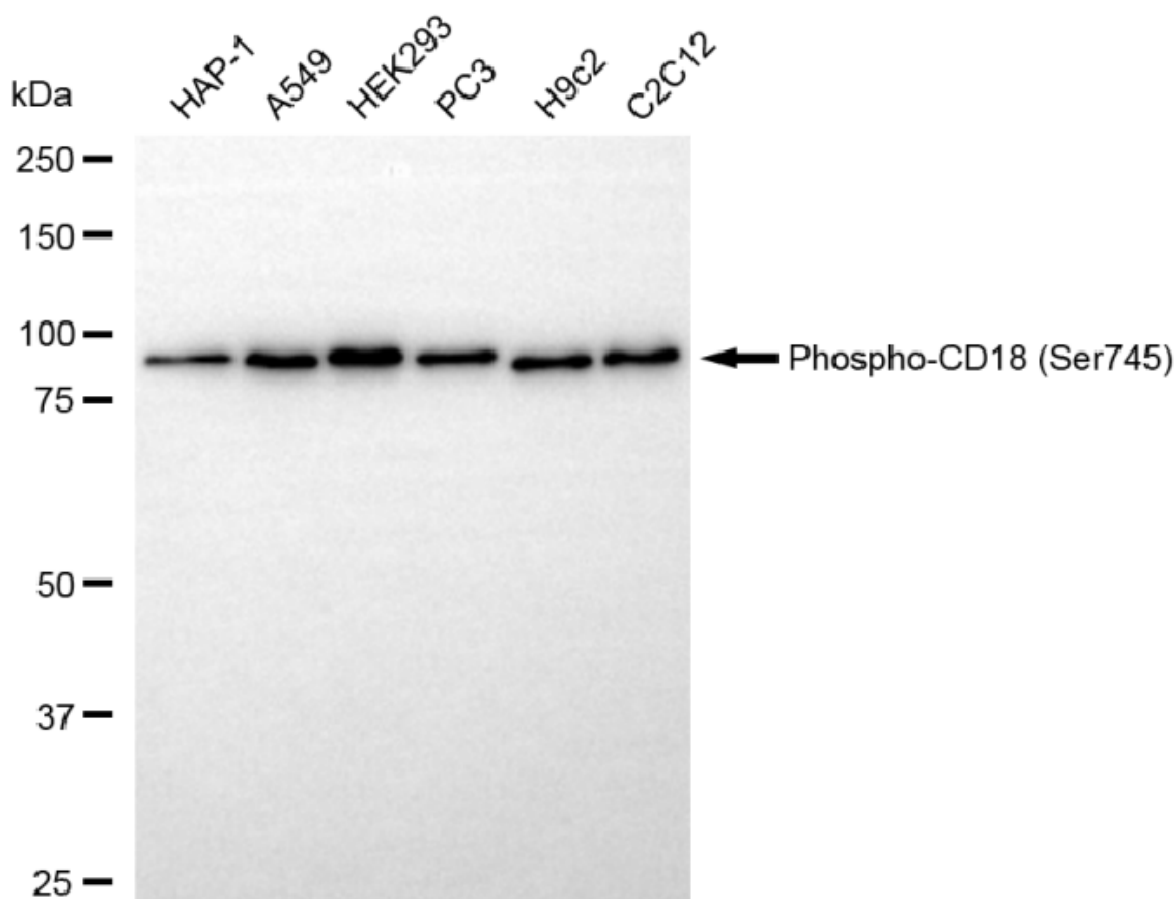
WWW.GENUINBIOTECH.COM

Anti-Phospho-CD18 (S745) Rabbit Monoclonal Antibody

PAGE 2

Note: This product is for research use only.

Validation Data



Copyright ©2025 Genuin Biotechnologies LLC

Western blotting analysis using anti-phospho-CD18 (Ser745) antibody (Cat#5313). Total cell lysates (30 μ g) from various cell lines were loaded and separated by SDS-PAGE. The blot was incubated with anti-phospho-CD18 (Ser745) antibody (Cat#5313, 1:5,000) and HRP-conjugated goat anti-rabbit secondary antibody (Cat#201, 1:20,000) respectively. Image was developed using NaQ™ ECL Substrate Kit (Cat#716).

SUPPORT

SUPPORT@GENUINBIOTECH.COM
TEL: +1-540-855-7041

ORDERS

SALES@GENUINBIOTECH.COM
FAX: +1-540-855-7041

WWW.GENUINBIOTECH.COM