

Catalog #: 5316

Aliases

HK2; Hexokinase 2; Muscle Form Hexokinase; Hexokinase Type II; Hexokinase-2; Hexokinase-B; EC 2.7.1.1; Hexokinase-2, Muscle; EC 2.7.1; HK II; HKII; HXK2

Background

Gene Name: HK2

NCBI Gene Entry: [3099](#)

UniProt Entry: [P52789](#)

Application Information

Molecular Weight: Predicted, 102 kDa; observed, 105-110 kDa

Clonality: Rabbit monoclonal antibody

Clone ID: 25GB910

Species Reactivity: Human, mouse, rat

Applications Tested: Western blotting (WB), flow cytometry (FCM), immunocytochemistry (IC)

Immunogen

Recombinant protein of human Hexokinase II

Isotype

Rabbit IgG

Storage Buffer

Supplied in PBS (pH 7.4) containing 50% glycerol, and 0.02% sodium azide.

Storage

Store at -20 °C for one year.

Recommended Dilutions

Western Blotting (WB): 1:1,000-1:5,000

Flow Cytometry (FCM): 1:2,000

Immunocytochemistry (IC): 1:100-1:1,000

Note: This product is for research use only.

Validation Data

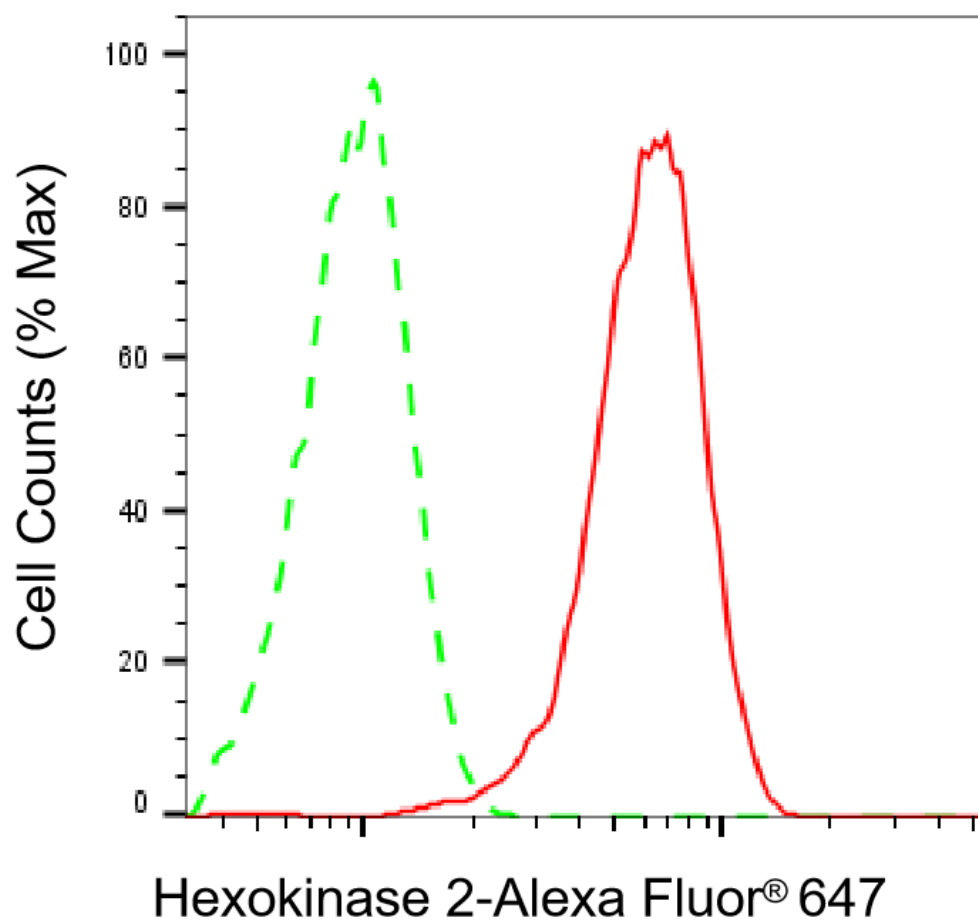
SUPPORT

SUPPORT@GENUINBIOTECH.COM
TEL: +1-540-855-7041

ORDERS

SALES@GENUINBIOTECH.COM
FAX: +1-540-855-7041

WWW.GENUINBIOTECH.COM



Copyright ©2025 Genuin Biotechnologies LLC

Flow cytometric analysis of Hexokinase 2 expression in HepG2 cells using anti-Hexokinase 2 antibody (Cat#5316, 1:2,000). Green, isotype control; red, Hexokinase 2.

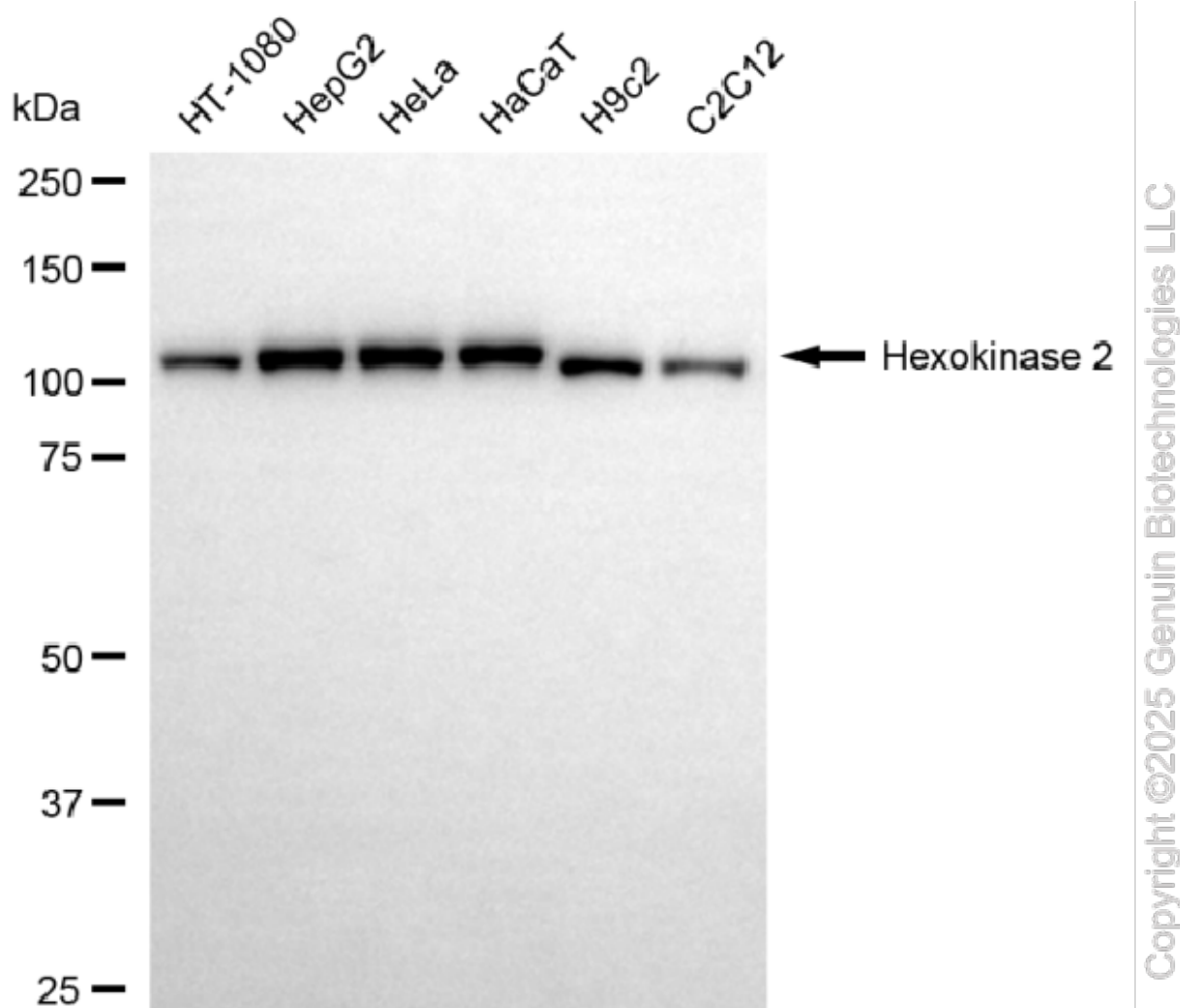
SUPPORT

SUPPORT@GENUINBIOTECH.COM
TEL: +1-540-855-7041

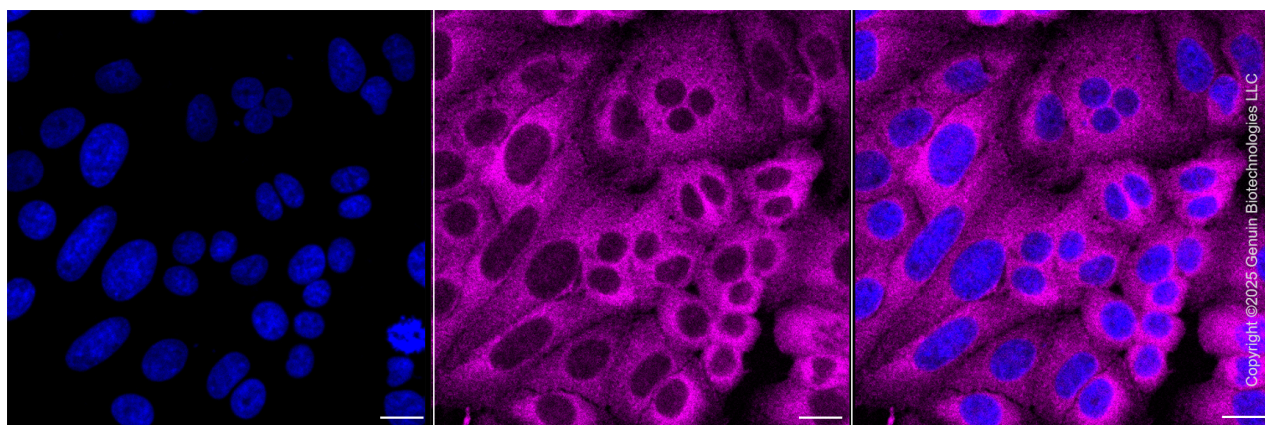
ORDERS

SALES@GENUINBIOTECH.COM
FAX: +1-540-855-7041

WWW.GENUINBIOTECH.COM



Western blotting analysis using anti-hexokinase 2 antibody (Cat#5316). Total cell lysates (30 μ g) from various cell lines were loaded and separated by SDS-PAGE. The blot was incubated with anti-hexokinase 2 antibody (Cat#5316, 1:5,000) and HRP-conjugated goat anti-rabbit secondary antibody (Cat#201, 1:20,000) respectively. Image was developed using NaQ™ ECL Substrate Kit (Cat#716).

**SUPPORT**

SUPPORT@GENUINBIOTECH.COM
TEL: +1-540-855-7041

ORDERS

SALES@GENUINBIOTECH.COM
FAX: +1-540-855-7041

WWW.GENUINBIOTECH.COM

Immunocytochemical staining of HepG2 cells with anti-Hexokinase 2 antibody (Cat#5316, 1:1,000) . Nuclei were stained blue with DAPI; Hexokinase 2 was stained magenta with Alexa Fluor® 647. Images were taken using Leica stellaris 5. Protein abundance based on laser Intensity and smart gain: Medium. Scale bar, 20 μ m.