

Catalog #: 5323

Aliases

SLC12A1; Solute Carrier Family 12 Member 1; NKCC2; BSC1; Kidney-Specific Na-K-Cl Symporter; Na-K-2Cl Cotransporter 2; BSC-1; CCC2; BSC; Solute Carrier Family 12 (Sodium/Potassium/Chloride Transporter), Member 1; Bumetanide-Sensitive Sodium-(Potassium)-Chloride Cotransporter 1; Bumetanide-Sensitive Cotransporter Type 1; Solute Carrier Family 12 (Sodium/Potassium/Chloride Transporters), Member 1; Bumetanide-Sensitive Sodium-(Potassium)-Chloride Cotransporter 2; Na-K-2Cl Cotransporter

Background

Gene Name: SLC12A1

NCBI Gene Entry: [6557](#)

UniProt Entry: [Q13621](#)

Application Information

Molecular Weight: Predicted, 121 kDa; observed, 180 kDa

Clonality: Rabbit monoclonal antibody

Clone ID: 25GB945

Species Reactivity: Human, mouse, rat

Applications Tested: Western blotting (WB), flow cytometry (FCM)

Immunogen

Recombinant protein of human SLC12A1

Isotype

Rabbit IgG

Storage Buffer

Supplied in PBS (pH 7.4) containing 50% glycerol, and 0.02% sodium azide.

Storage

Store at -20 °C for one year.

Recommended Dilutions

Western Blotting (WB): 1:1,000-1:5,000

Flow Cytometry (FCM): 1:200-1:2,000

SUPPORT

SUPPORT@GENUINBIOTECH.COM
TEL: +1-540-855-7041

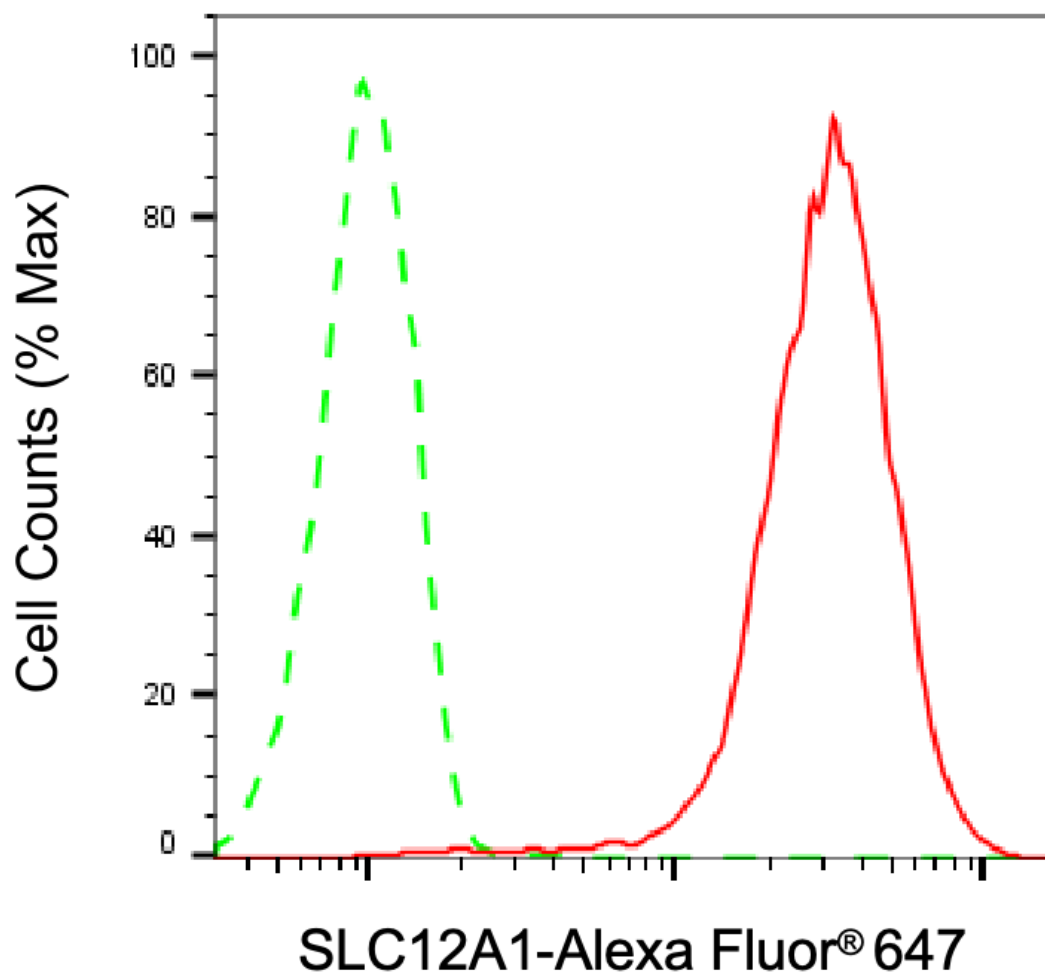
ORDERS

SALES@GENUINBIOTECH.COM
FAX: +1-540-855-7041

WWW.GENUINBIOTECH.COM

Note: This product is for research use only.

Validation Data



Copyright ©2025 Genuin Biotechnologies LLC

Flow cytometric analysis of SLC12A1 expression in HepG2 cells using anti-SLC12A1 antibody (Cat#5323, 1:2,000). Green, isotype control; red, SLC12A1.

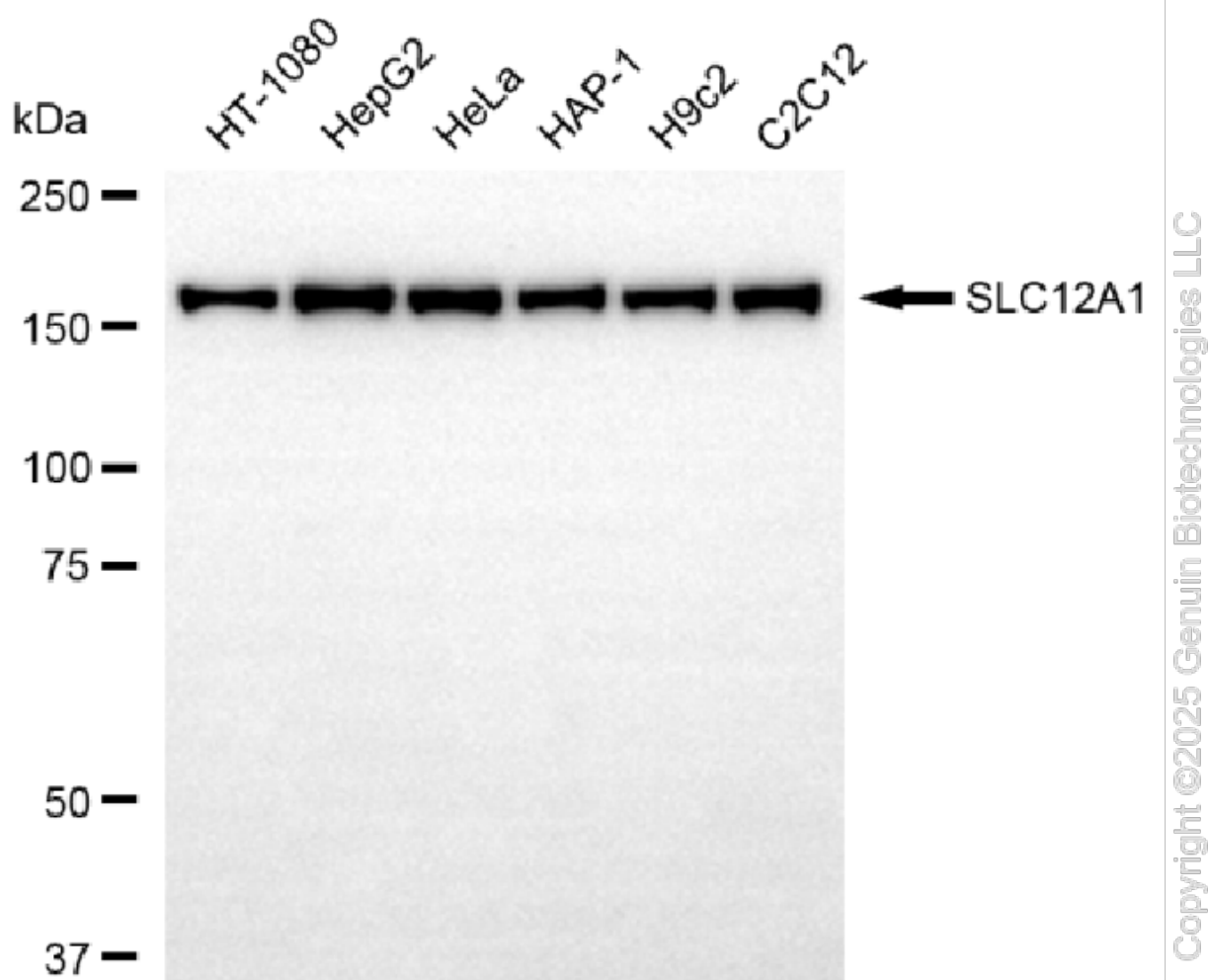
SUPPORT

SUPPORT@GENUINBIOTECH.COM
TEL: +1-540-855-7041

ORDERS

SALES@GENUINBIOTECH.COM
FAX: +1-540-855-7041

WWW.GENUINBIOTECH.COM



Western blotting analysis using anti-SLC12A1 antibody (Cat#5323). Total cell lysates (30 µg) from various cell lines were loaded and separated by SDS-PAGE. The blot was incubated with anti-SLC12A1 antibody (Cat#5323, 1:5,000) and HRP-conjugated goat anti-rabbit secondary antibody (Cat#201, 1:20,000) respectively. Image was developed using NaQ™ ECL Substrate Kit (Cat#716).