

Catalog #: 5324

Aliases

NUS1; NUS1 Dehydrodolichyl Diphosphate Synthase Subunit; NgBR; Nogo-B Receptor; TANGO14; C6orf68; Dehydrodolichyl Diphosphate Synthase Complex Subunit NUS1; Nuclear Undecaprenyl Pyrophosphate Synthase 1 Homolog; Cis-Prenyltransferase Subunit NgBR; MGC7199; Nuclear Undecaprenyl Pyrophosphate Synthase 1 Homolog (S. Cerevisiae); Transport And Golgi Organization 14 Homolog (Drosophila); Dehydrodolichyl Diphosphate Synthase Complex Subunit NUS1; Transport And Golgi Organization 14 Homolog; Di-Trans,Poly-Cis-Decaprenylcistransferase; Chromosome 6 Open Reading Frame 68; EC 2.5.1.87; MGC:7199; CDG1AA; MRD55; NGBR

Background

Gene Name: NUS1

NCBI Gene Entry: [116150](#)

UniProt Entry: [Q96E220](#)

Application Information

Molecular Weight: Predicted, 33 kDa; observed, 33 kDa

Clonality: Rabbit monoclonal antibody

Clone ID: 25GB950

Species Reactivity: Human, mouse, rat

Applications Tested: Western blotting (WB), flow cytometry (FCM), immunocytochemistry (IC)

Immunogen

A synthesized peptide derived from human NUS1

Isotype

Rabbit IgG

Storage Buffer

Supplied in PBS (pH 7.4) containing 50% glycerol, and 0.02% sodium azide.

Storage

Store at -20 °C for one year.

Recommended Dilutions

Western Blotting (WB): 1:1,000-1:5,000

SUPPORT

SUPPORT@GENUINBIOTECH.COM
TEL: +1-540-855-7041

ORDERS

SALES@GENUINBIOTECH.COM
FAX: +1-540-855-7041

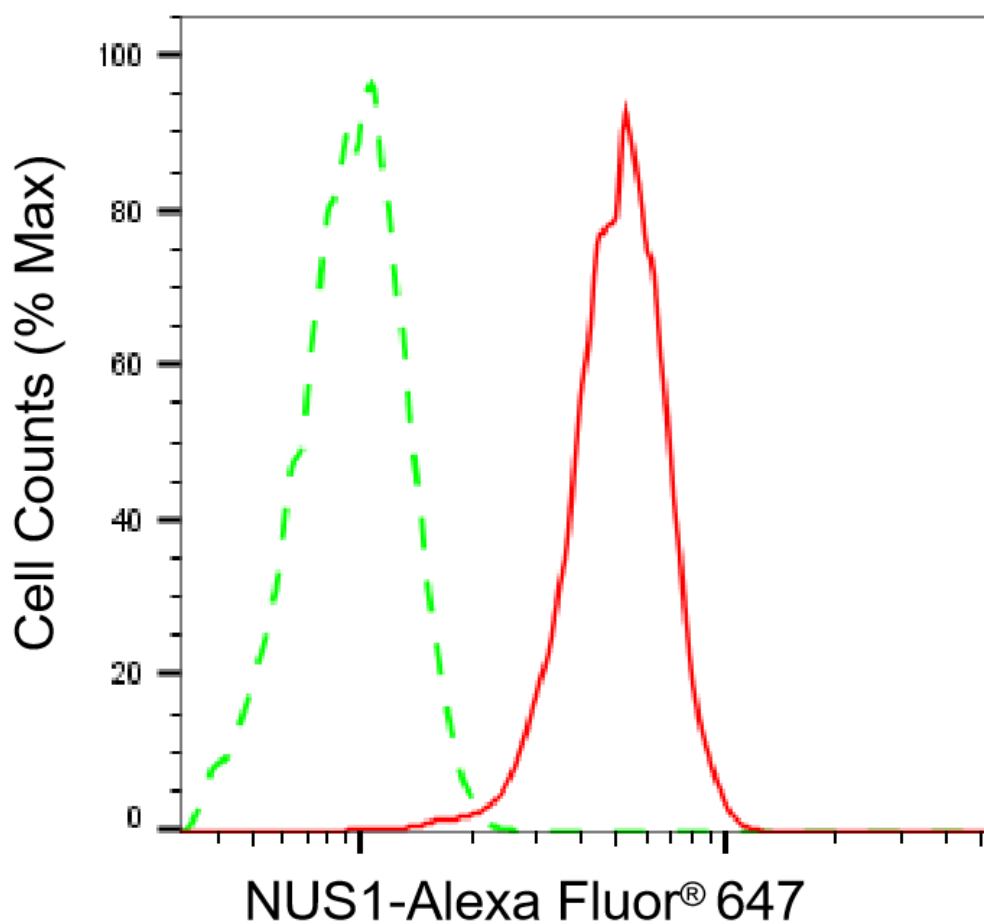
WWW.GENUINBIOTECH.COM

Flow Cytometry (FCM): 1:2,000

Immunocytochemistry (IC): 1:100-1:1,000

Note: This product is for research use only.

Validation Data



Copyright ©2025 Genuin Biotechnologies LLC

Flow cytometric analysis of NUS1 expression in HepG2 cells using anti-NUS1 antibody (Cat#5324, 1:2,000). Green, isotype control; red, NUS1.

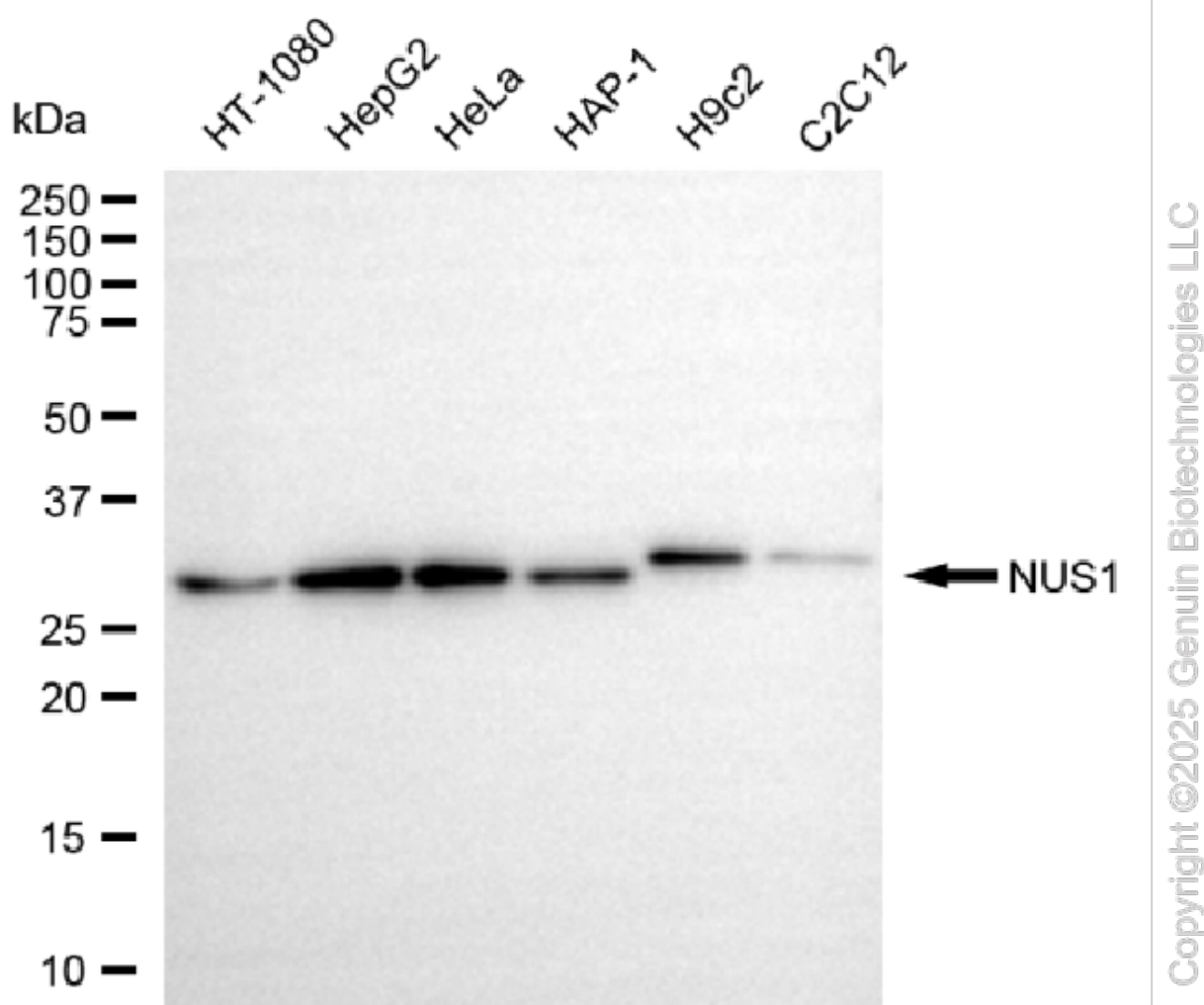
SUPPORT

SUPPORT@GENUINBIOTECH.COM
TEL: +1-540-855-7041

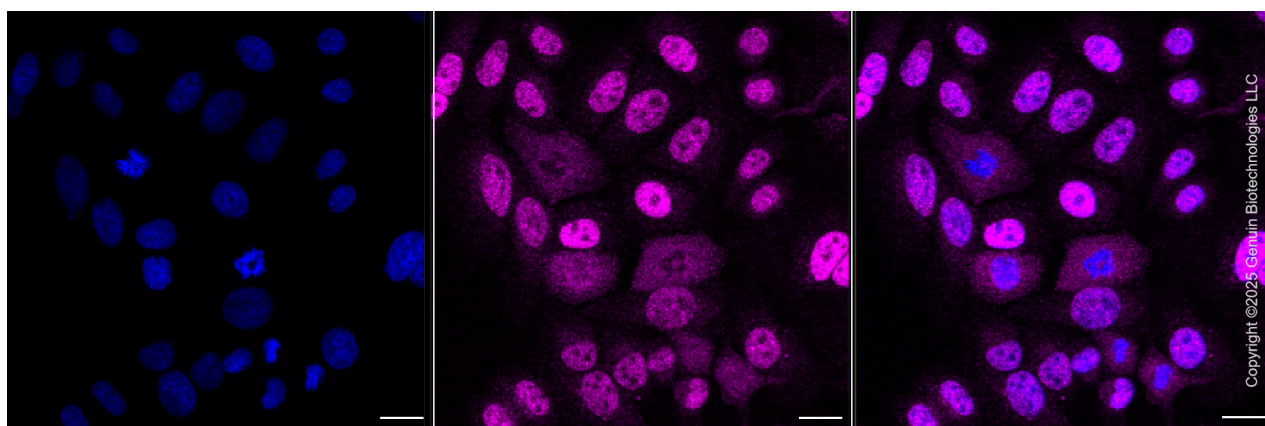
ORDERS

SALES@GENUINBIOTECH.COM
FAX: +1-540-855-7041

WWW.GENUINBIOTECH.COM



Western blotting analysis using anti-NUS1 antibody (Cat#5324). Total cell lysates (30 μ g) from various cell lines were loaded and separated by SDS-PAGE. The blot was incubated with anti-NUS1 antibody (Cat#5324, 1:5,000) and HRP-conjugated goat anti-rabbit secondary antibody (Cat#201, 1:20,000) respectively. Image was developed using NaQ™ ECL Substrate Kit (Cat#716).

**SUPPORT**

SUPPORT@GENUINBIOTECH.COM
TEL: +1-540-855-7041

ORDERS

SALES@GENUINBIOTECH.COM
FAX: +1-540-855-7041

WWW.GENUINBIOTECH.COM

Immunocytochemical staining of HepG2 cells with anti-NUS1 antibody (Cat#5324, 1:1,000) . Nuclei were stained blue with DAPI; NUS1 was stained magenta with Alexa Fluor® 647. Images were taken using Leica stellaris 5. Protein abundance based on laser Intensity and smart gain: Medium. Scale bar, 20 μ m.