

## Catalog #: 5326

## Aliases

MITF; Melanocyte Inducing Transcription Factor; BHLHe32; Microphthalmia-Associated Transcription Factor; MI; Melanogenesis Associated Transcription Factor; Class E Basic Helix-Loop-Helix Protein 32; WS2A; WS2; Microphthalmia-Associated Transcription Factor; Homolog Of Mouse Microphthalmia; Waardenburg Syndrome, Type 2A; BHLHE32; COMMAD; MITF-A; CMM8

## Background

Gene Name: MITF

NCBI Gene Entry: [4286](#)

UniProt Entry: [O75030](#)

## Application Information

Molecular Weight: Predicted, 59 kDa; observed, 59-70 kDa

Clonality: Mouse monoclonal antibody

Clone ID: 25GB970

Species Reactivity: Human

Applications Tested: Western blotting (WB)

## Immunogen

Recombinant protein of human MITF

## Isotype

Mouse IgG1 kappa

## Storage Buffer

Supplied in PBS (pH 7.4) containing 50% glycerol, and 0.02% sodium azide.

## Storage

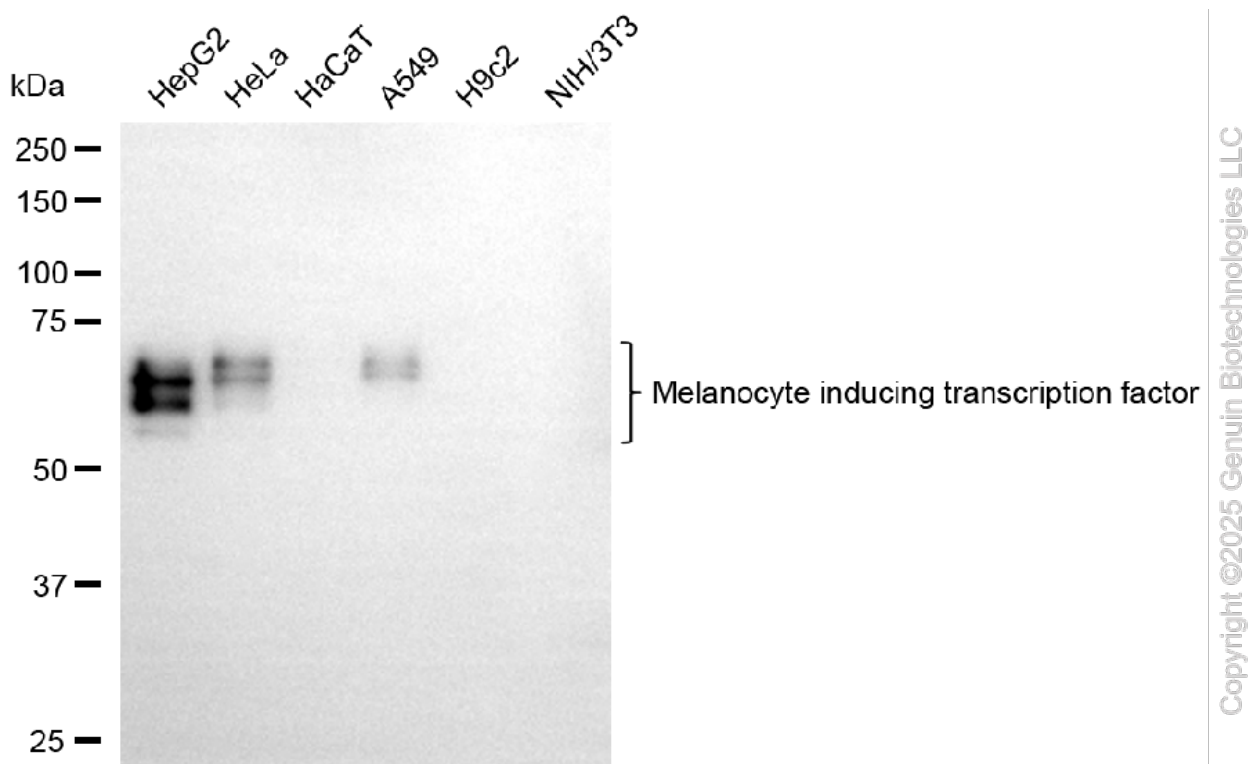
Store at -20 °C for one year.

## Recommended Dilutions

Western Blotting (WB): 1:400-1:2,000

**Note:** This product is for research use only.

## Validation Data



Western blotting analysis using anti-melanocyte inducing transcription factor antibody (Cat#5326). Total cell lysates (30  $\mu$ g) from various cell lines were loaded and separated by SDS-PAGE. The blot was incubated with anti-melanocyte inducing transcription factor antibody (Cat#5326, 1:2,000) and HRP-conjugated goat anti-mouse secondary antibody (Cat#101, 1:20,000) respectively. Image was developed using FeQ™ ECL Substrate Kit (Cat#226).