

Catalog #: 5333

Aliases

ANXA11; Annexin A11; Annexin XI; ANX11; Calcyclin-Associated Annexin 50; 56 KDa Autoantigen; Annexin-11; CAP-50; Epididymis Secretory Sperm Binding Protein; IBMWMA; ALS23; CAP50

Background

Gene Name: ANXA11

NCBI Gene Entry: [311](#)

UniProt Entry: [P50995](#)

Application Information

Molecular Weight: Predicted, 54 kDa; observed, 50 kDa

Clonality: Mouse monoclonal antibody

Clone ID: 25GB1005

Species Reactivity: Human, mouse, rat

Applications Tested: Western blotting (WB), flow cytometry (FCM), immunocytochemistry (IC)

Immunogen

Recombinant protein of human ANXA11

Isotype

Mouse IgG1

Storage Buffer

Supplied in PBS (pH 7.4) containing 50% glycerol, and 0.02% sodium azide.

Storage

Store at -20 °C for one year.

Recommended Dilutions

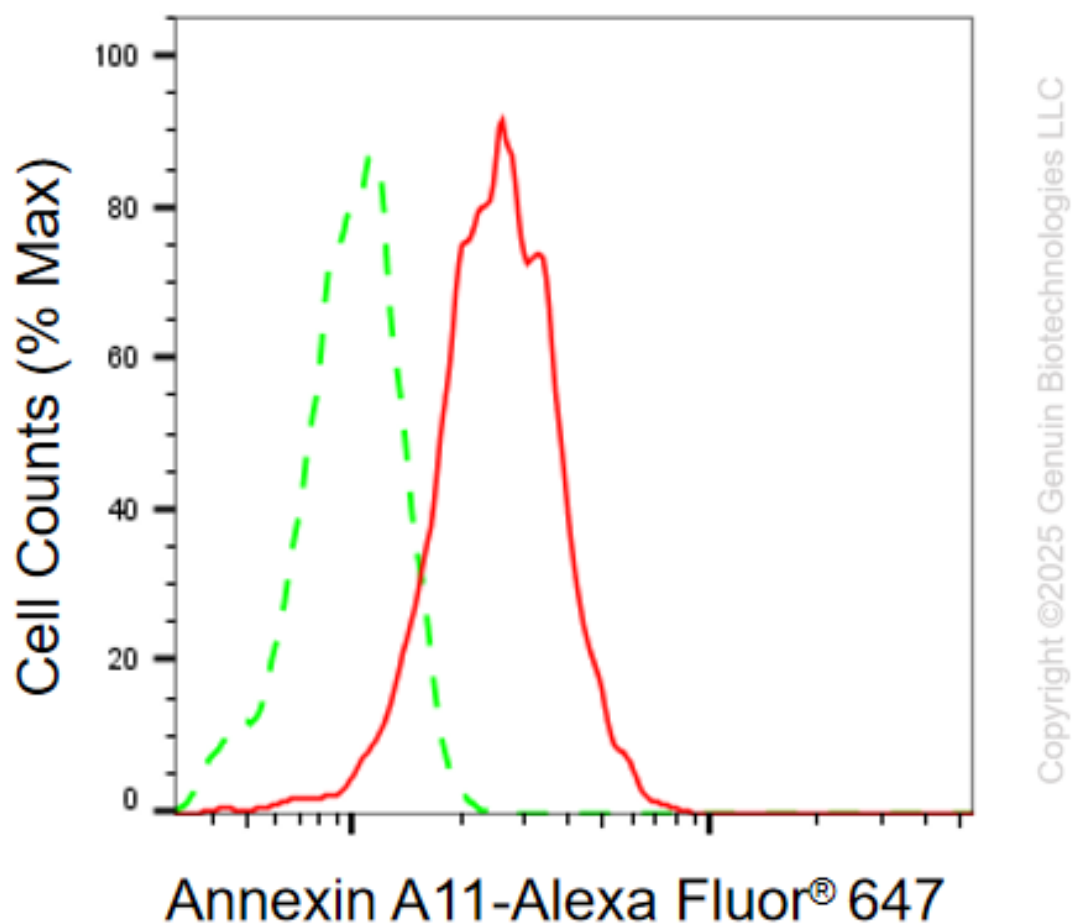
Western Blotting (WB): 1:100-1:500

Flow Cytometry (FCM): 1:2,000

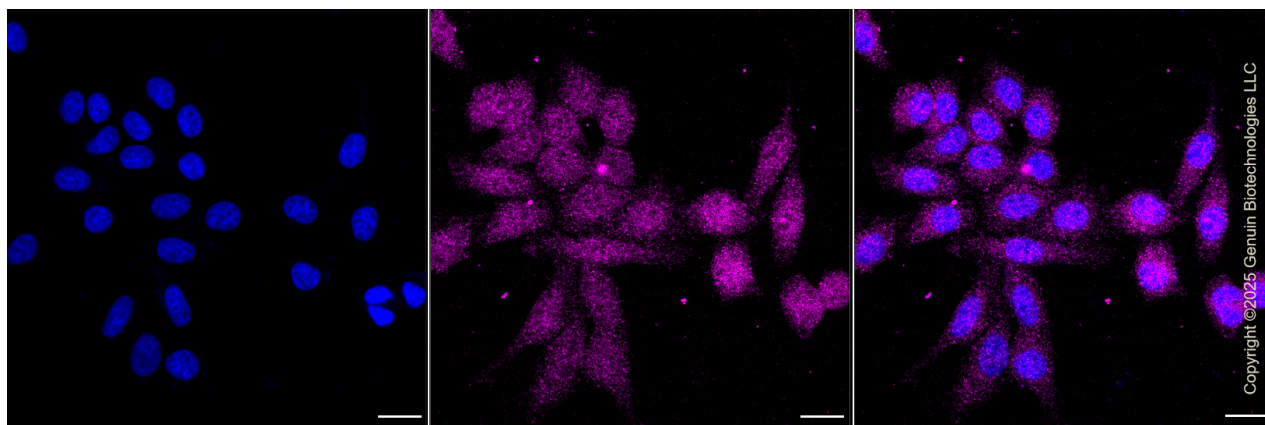
Immunocytochemistry (IC): 1:100-1:1,000

Note: This product is for research use only.

Validation Data



Flow cytometric analysis of Annexin A11 expression in HepG2 cells using anti-Annexin A11 antibody (Cat#5333, 1:2,000). Green, isotype control; red, Annexin A11.



SUPPORT

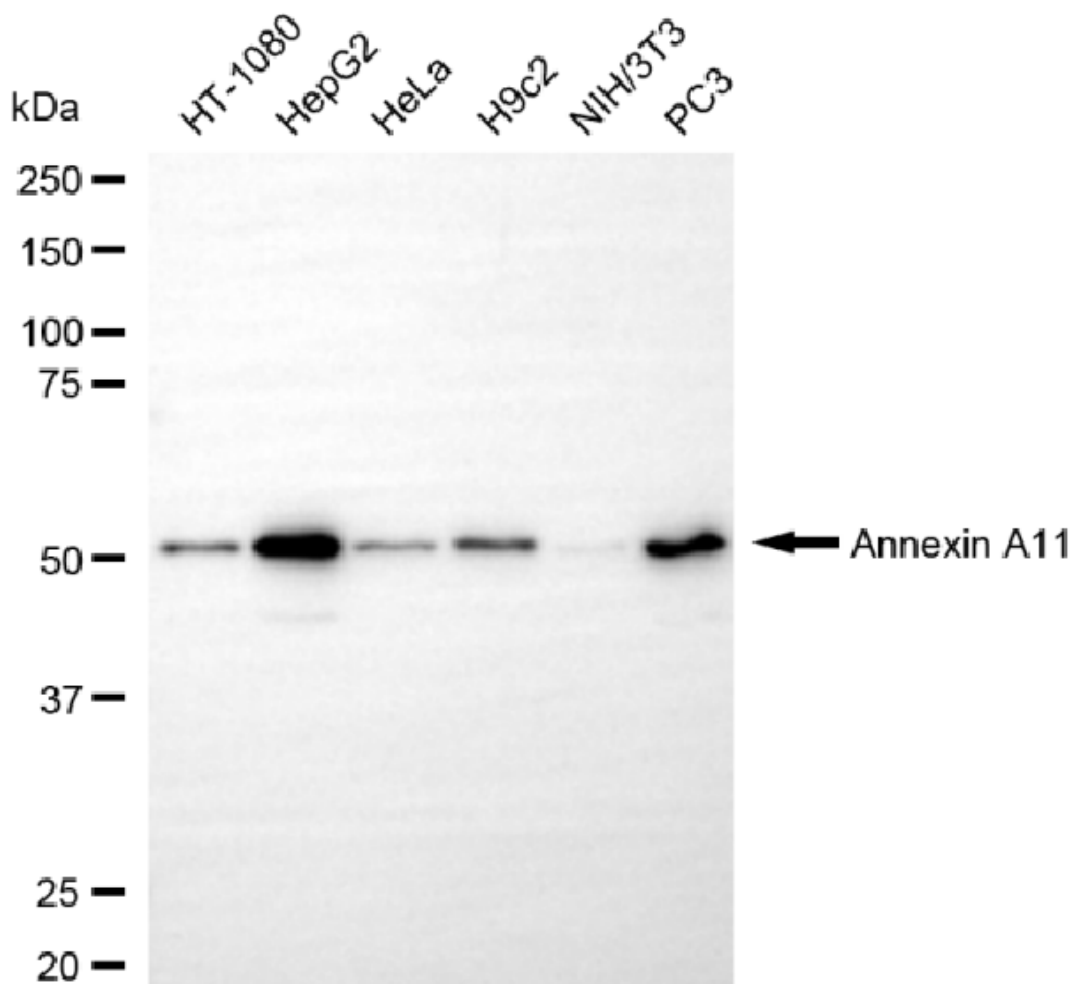
SUPPORT@GENUINBIOTECH.COM
TEL: +1-540-855-7041

ORDERS

SALES@GENUINBIOTECH.COM
FAX: +1-540-855-7041

WWW.GENUINBIOTECH.COM

Immunocytochemical staining of HepG2 cells with anti-Annexin A11 antibody (Cat#5333, 1:1,000). Nuclei were stained blue with DAPI; Annexin A11 was stained magenta with Alexa Fluor® 647. Images were taken using Leica stellaris 5. Protein abundance based on laser Intensity and Smart Gain: Low. Scale bar, 20 µm.



Copyright ©2025 Genuin Biotechnologies LLC

Western blotting analysis using anti-annexin A11 antibody (Cat#5333). Total cell lysates (30 µg) from various cell lines were loaded and separated by SDS-PAGE. The blot was incubated with anti-annexin A11 antibody (Cat#5333, 1:500) and HRP-conjugated goat anti-mouse secondary antibody (Cat#101, 1:20,000) respectively. Image was developed using NaQ™ ECL Substrate Kit (Cat#716).