

## Catalog #: 5334

## Aliases

ANXA1; Annexin A1; ANX1; LPC1; Phospholipase A2 Inhibitory Protein; Chromobindin-9; Calpactin II; Calpactin-2; Annexin-1; Epididymis Secretory Sperm Binding Protein; Annexin I (Lipocortin I); Lipocortin I; Annexin I; P35

## Background

Gene Name: ANXA1

NCBI Gene Entry: [301](#)

UniProt Entry: [P04083](#)

## Application Information

Molecular Weight: Predicted, 39 kDa; observed, 33 kDa

Clonality: Mouse monoclonal antibody

Clone ID: 25GB1010

Species Reactivity: Human, rat

Applications Tested: Western blotting (WB), flow cytometry (FCM), immunocytochemistry (IC)

## Immunogen

Recombinant protein of human ANXA1

## Isotype

Mouse IgG1

## Storage Buffer

Supplied in PBS (pH 7.4) containing 50% glycerol, and 0.02% sodium azide.

## Storage

Store at -20 °C for one year.

## Recommended Dilutions

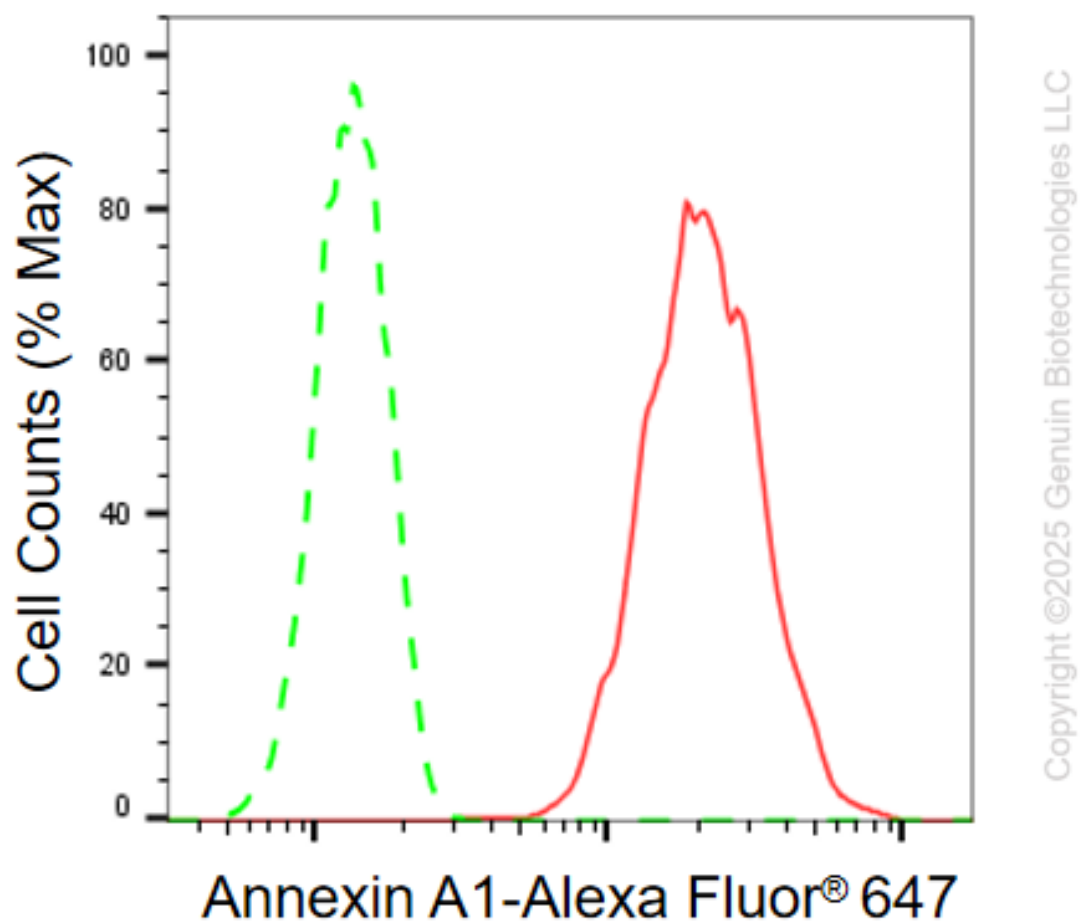
Western Blotting (WB): 1:500-1:2,500

Flow Cytometry (FCM): 1:2,000

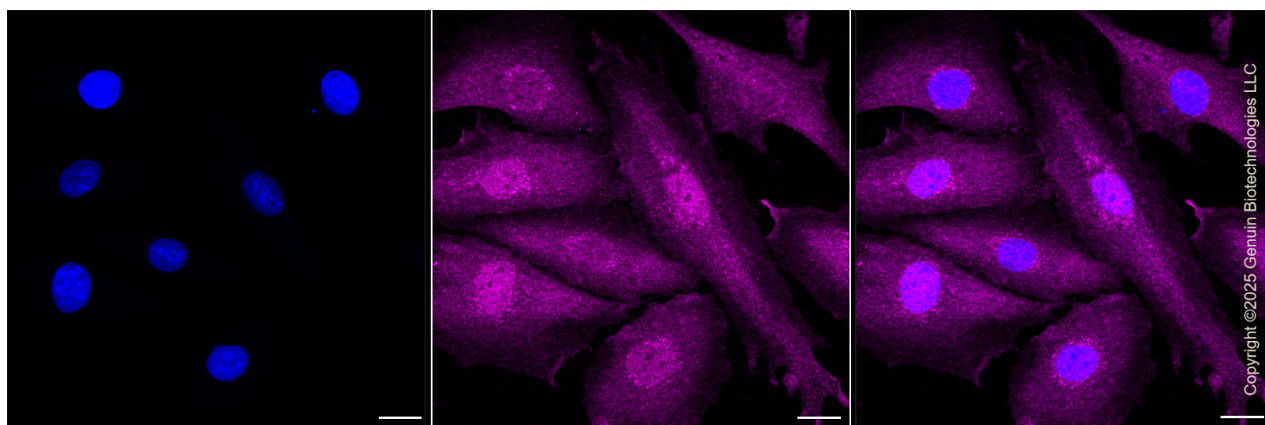
Immunocytochemistry (IC): 1:100-1:1,000

**Note:** This product is for research use only.

## Validation Data



Flow cytometric analysis of Annexin A1 expression in H9c2 cells using anti-Annexin A1 antibody (Cat#5334, 1:2,000). Green, isotype control; red, Annexin A1.



## SUPPORT

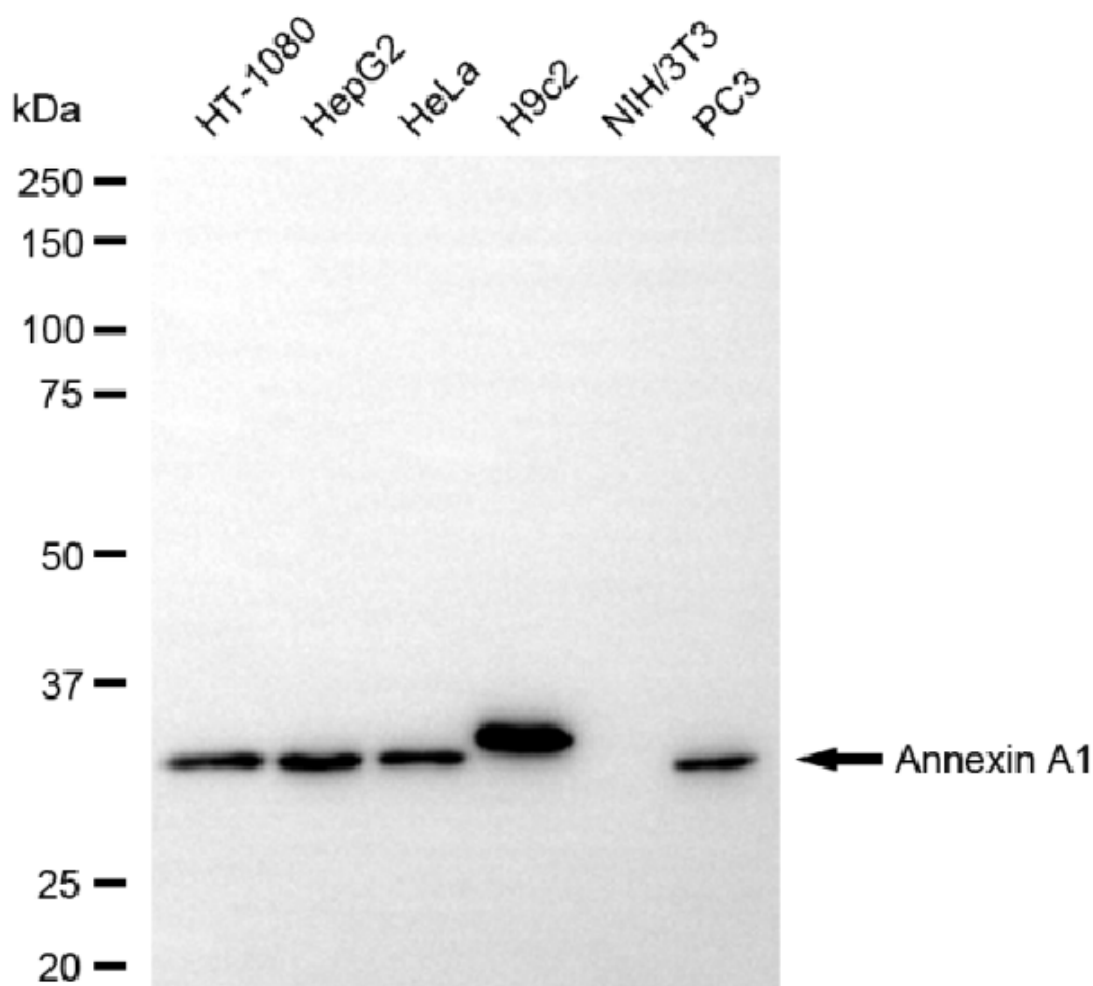
SUPPORT@GENUINBIOTECH.COM  
TEL: +1-540-855-7041

## ORDERS

SALES@GENUINBIOTECH.COM  
FAX: +1-540-855-7041

WWW.GENUINBIOTECH.COM

Immunocytochemical staining of H9C2 cells with anti-Annexin A1 antibody (Cat#5334, 1:1,000). Nuclei were stained blue with DAPI; Annexin A1 was stained magenta with Alexa Fluor® 647. Images were taken using Leica stellaris 5. Protein abundance based on laser Intensity and smart gain: Medium. Scale bar, 20  $\mu$ m.



Copyright ©2025 Genuin Biotechnologies LLC

Western blotting analysis using anti-annexin A1 antibody (Cat#5334). Total cell lysates (30  $\mu$ g) from various cell lines were loaded and separated by SDS-PAGE. The blot was incubated with anti-annexin A1 antibody (Cat#5334, 1:2,500) and HRP-conjugated goat anti-mouse secondary antibody (Cat#101, 1:20,000) respectively. Image was developed using NaQ™ ECL Substrate Kit (Cat#716).