

Catalog #: 5335

Aliases

ARHGDIA; Rho GDP Dissociation Inhibitor Alpha; RHOGDI; GDIA1; Rho GDP Dissociation Inhibitor (GDI) Alpha; Rho GDP-Dissociation Inhibitor 1; GDP-Dissociation Inhibitor, Aplysia RAS-Related 1; Epididymis Secretory Sperm Binding Protein Li 47e; Rho-GDI Alpha; HEL-S-47e; Rho GDI 1; RHOGDI-1; NPHS8

Background

Gene Name: ARHGDIA

NCBI Gene Entry: [396](#)

UniProt Entry: [P52565](#)

Application Information

Molecular Weight: Predicted, 23 kDa; observed, 23 kDa

Clonality: Mouse monoclonal antibody

Clone ID: 25GB1015

Species Reactivity: Human, mouse, rat

Applications Tested: Western blotting (WB), flow cytometry (FCM), immunocytochemistry (IC)

Immunogen

Recombinant protein of human ARHGDIA

Isotype

Mouse IgG1

Storage Buffer

Supplied in PBS (pH 7.4) containing 50% glycerol, and 0.02% sodium azide.

Storage

Store at -20 °C for one year.

Recommended Dilutions

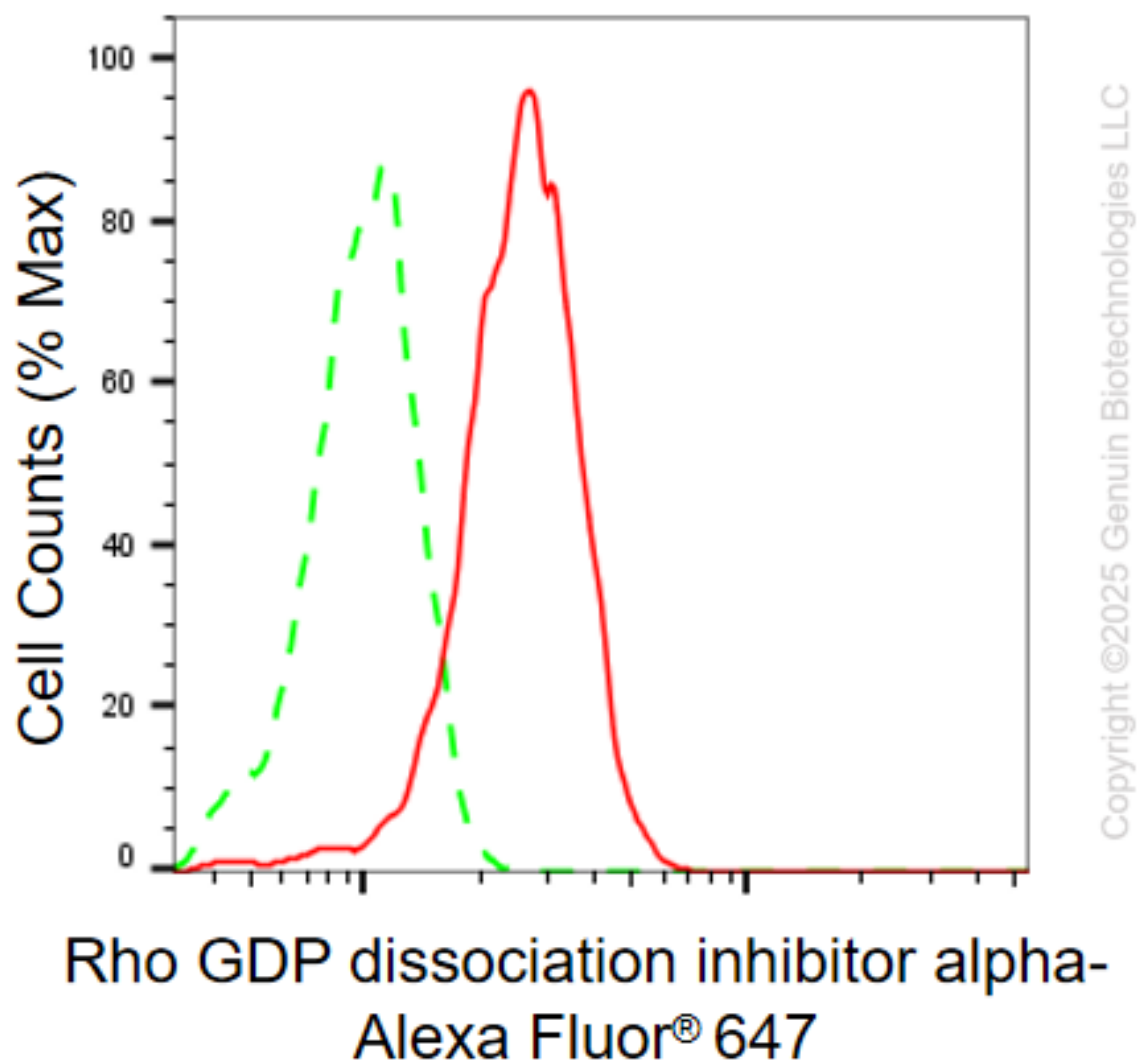
Western Blotting (WB): 1:400-1:2,000

Flow Cytometry (FCM): 1:2,000

Immunocytochemistry (IC): 1:100-1:1,000

Note: This product is for research use only.

Validation Data



Flow cytometric analysis of Rho GDP dissociation inhibitor alpha expression in HepG2 cells using anti-Rho GDP dissociation inhibitor alpha antibody (Cat#5335, 1:2,000). Green, isotype control; red, Rho GDP dissociation inhibitor alpha.

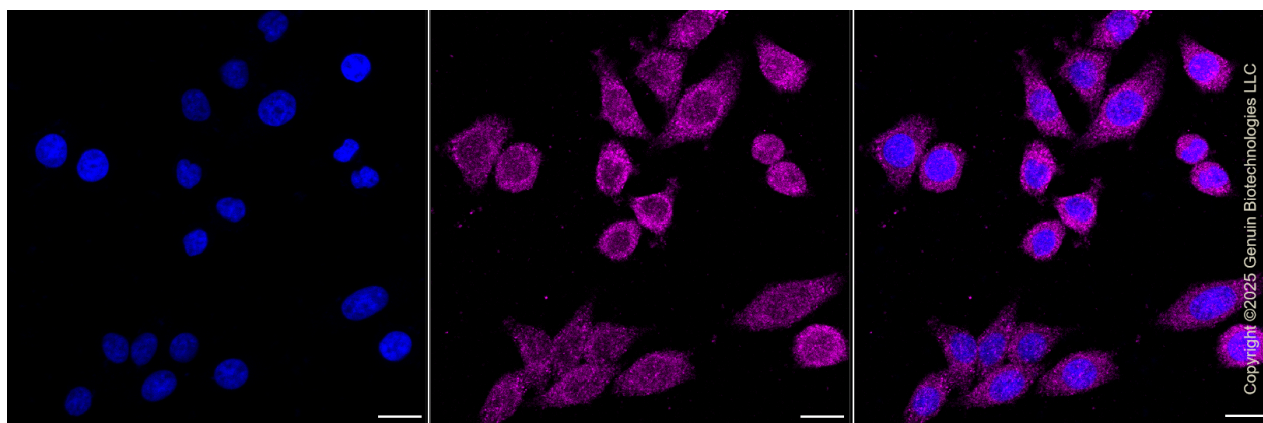
SUPPORT

SUPPORT@GENUINBIOTECH.COM
TEL: +1-540-855-7041

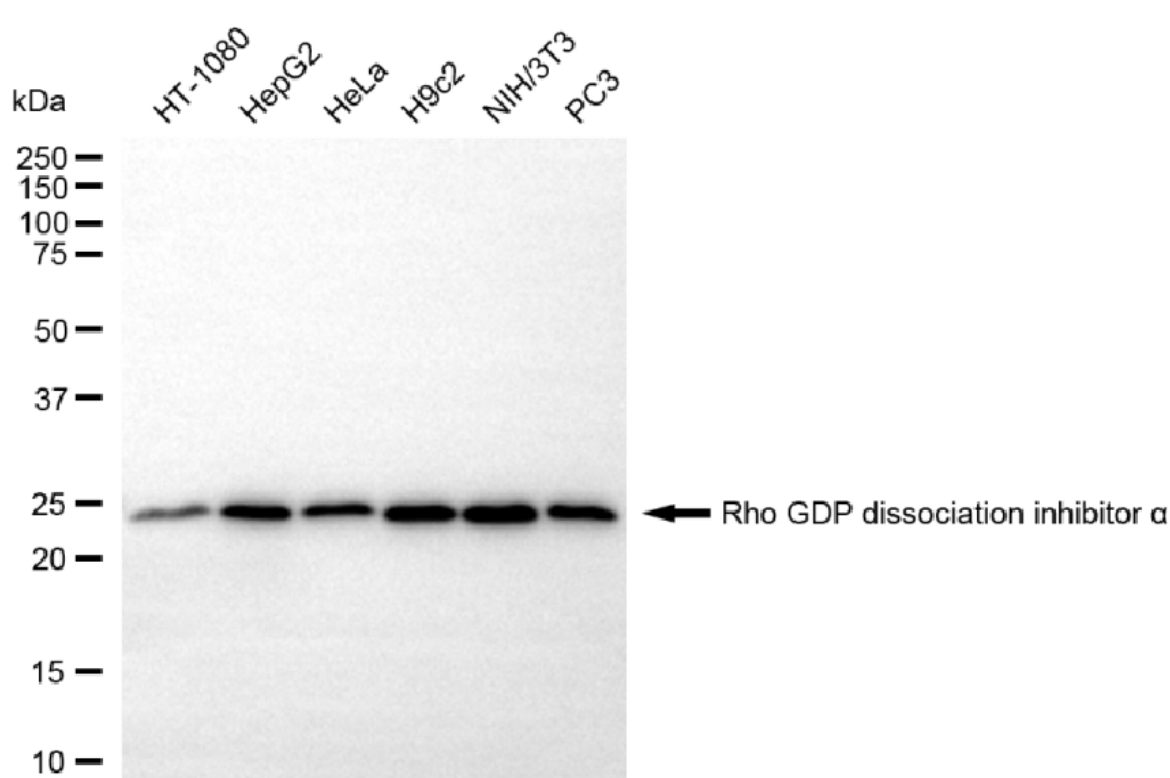
ORDERS

SALES@GENUINBIOTECH.COM
FAX: +1-540-855-7041

WWW.GENUINBIOTECH.COM



Immunocytochemical staining of HepG2 cells with anti-Rho GDP dissociation inhibitor alpha antibody (Cat#5335, 1:1,000). Nuclei were stained blue with DAPI; Rho GDP dissociation inhibitor alpha was stained magenta with Alexa Fluor® 647. Images were taken using Leica stellaris 5. Protein abundance based on laser Intensity and Smart Gain: Medium. Scale bar, 20 μ m.



Western blotting analysis using anti-Rho GDP dissociation inhibitor alpha antibody (Cat#5335). Total cell lysates (30 μ g) from various cell lines were loaded and separated by SDS-PAGE. The blot was incubated with anti-Rho GDP dissociation inhibitor alpha antibody (Cat#5335, 1:2,000) and HRP-conjugated goat anti-mouse secondary antibody (Cat#101, 1:20,000) respectively. Image was developed using NaQ™ ECL Substrate Kit (Cat#716).

SUPPORT

SUPPORT@GENUINBIOTECH.COM
TEL: +1-540-855-7041

ORDERS

SALES@GENUINBIOTECH.COM
FAX: +1-540-855-7041

WWW.GENUINBIOTECH.COM