

Anti-NIMA Related Kinase 9 Mouse Monoclonal Antibody



Catalog #: 5338

Aliases

NEK9; NIMA Related Kinase 9; NERCC; NERCC1; Nek8; NIMA (Never In Mitosis Gene A)-Related Kinase 9; Serine/Threonine-Protein Kinase Nek9; NimA-Related Protein Kinase 9; DKFZp434D0935; Nercc1 Kinase; EC 2.7.11.1; MGC16714 2 5Never In Mitosis A-Related Kinase 9; NimA-Related Kinase 8; KIAA1995; LCCS10; APUG; NEK8; NC

Background

Gene Name: NEK9

NCBI Gene Entry: [91754](#)

UniProt Entry: [Q8TD19](#)

Application Information

Molecular Weight: Predicted, 107 kDa; observed, 107 kDa

Clonality: Mouse monoclonal antibody

Clone ID: 25GB1030

Species Reactivity: Human, rat

Applications Tested: Western blotting (WB), flow cytometry (FCM), immunocytochemistry (IC)

Immunogen

Recombinant protein of human NEK9

Isotype

Mouse IgG1

Storage Buffer

Supplied in PBS (pH 7.4) containing 50% glycerol, and 0.02% sodium azide.

Storage

Store at -20 °C for one year.

Recommended Dilutions

Western Blotting (WB): 1:500-1:2,500

Flow Cytometry (FCM): 1:2,000

Immunocytochemistry (IC): 1:100-1:1,000

SUPPORT

SUPPORT@GENUINBIOTECH.COM
TEL: +1-540-855-7041

ORDERS

SALES@GENUINBIOTECH.COM
FAX: +1-540-855-7041

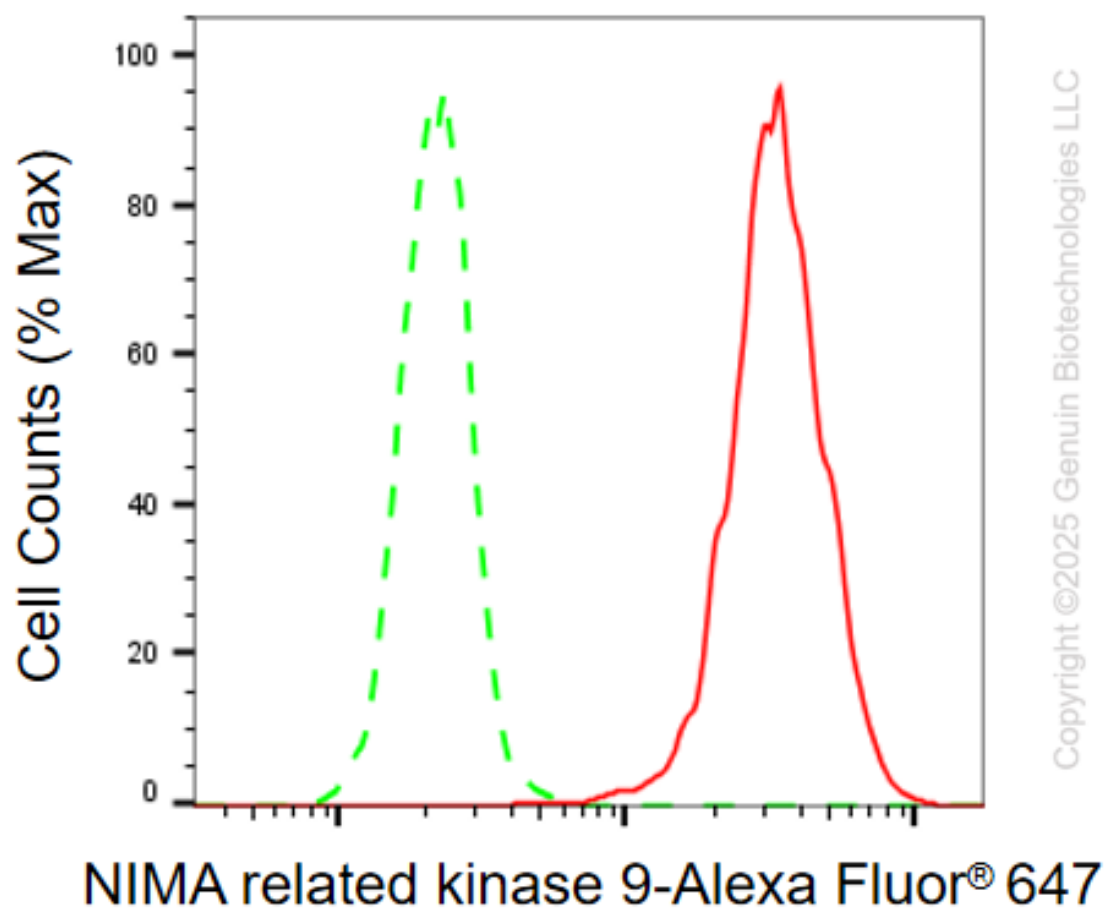
WWW.GENUINBIOTECH.COM

Anti-NIMA Related Kinase 9 Mouse Monoclonal Antibody

PAGE 2

Note: This product is for research use only.

Validation Data



Flow cytometric analysis of NIMA related kinase 9 expression in HeLa cells using anti-NIMA related kinase 9 antibody (Cat#5338, 1:2,000). Green, isotype control; red, NIMA related kinase 9.

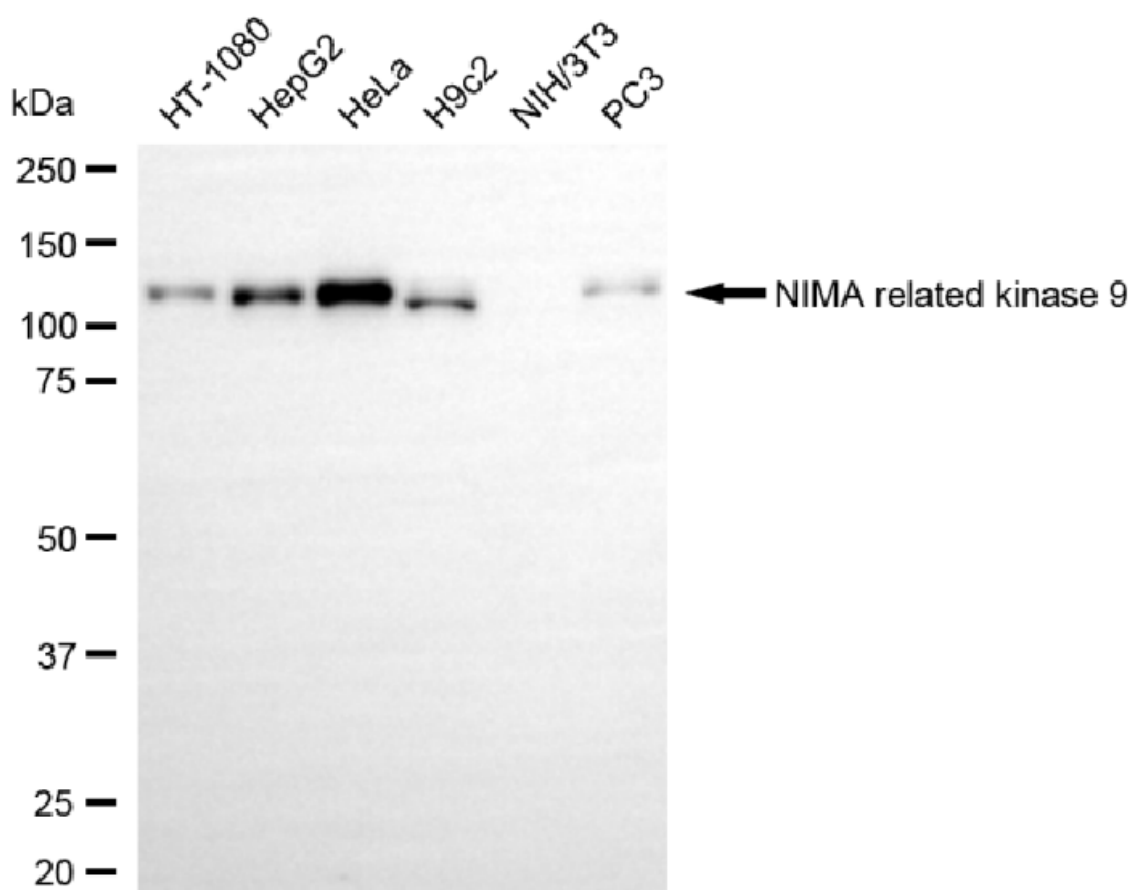
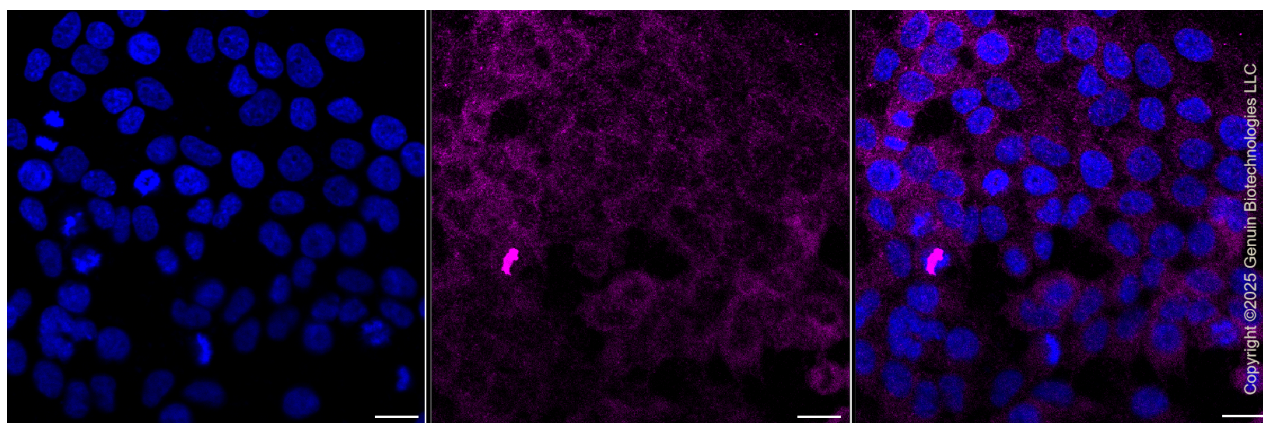
SUPPORT

SUPPORT@GENUINBIOTECH.COM
TEL: +1-540-855-7041

ORDERS

SALES@GENUINBIOTECH.COM
FAX: +1-540-855-7041

WWW.GENUINBIOTECH.COM



Anti-NIMA Related Kinase 9 Mouse Monoclonal Antibody

PAGE 4

mouse secondary antibody (Cat#101, 1:20,000) respectively. Image was developed using NaQ™ ECL Substrate Kit (Cat#716).

SUPPORT

SUPPORT@GENUINBIOTECH.COM
TEL: +1-540-855-7041

ORDERS

SALES@GENUINBIOTECH.COM
FAX: +1-540-855-7041

WWW.GENUINBIOTECH.COM