

Catalog #: 5342

Aliases

APMAP; Adipocyte Plasma Membrane Associated Protein; C20orf3; BSCv; Adipocyte Plasma Membrane-Associated Protein; Protein BSCv; Chromosome 20 Open Reading Frame 3

Background

Gene Name: APMAP

NCBI Gene Entry: [57136](#)

UniProt Entry: [Q9HDC9](#)

Application Information

Molecular Weight: Predicted, 46 kDa; observed, 46 kDa

Clonality: Mouse monoclonal antibody

Clone ID: 25GB1050

Species Reactivity: Human

Applications Tested: Western blotting (WB), flow cytometry (FCM), immunocytochemistry (IC)

Immunogen

Recombinant protein of human C20orf3

Isotype

Mouse IgG1

Storage Buffer

Supplied in PBS (pH 7.4) containing 50% glycerol, and 0.02% sodium azide.

Storage

Store at -20 °C for one year.

Recommended Dilutions

Western Blotting (WB): 1:500-1:2,500

Flow Cytometry (FCM): 1:2,000

Immunocytochemistry (IC): 1:100-1:1,000

Note: This product is for research use only.

Validation Data

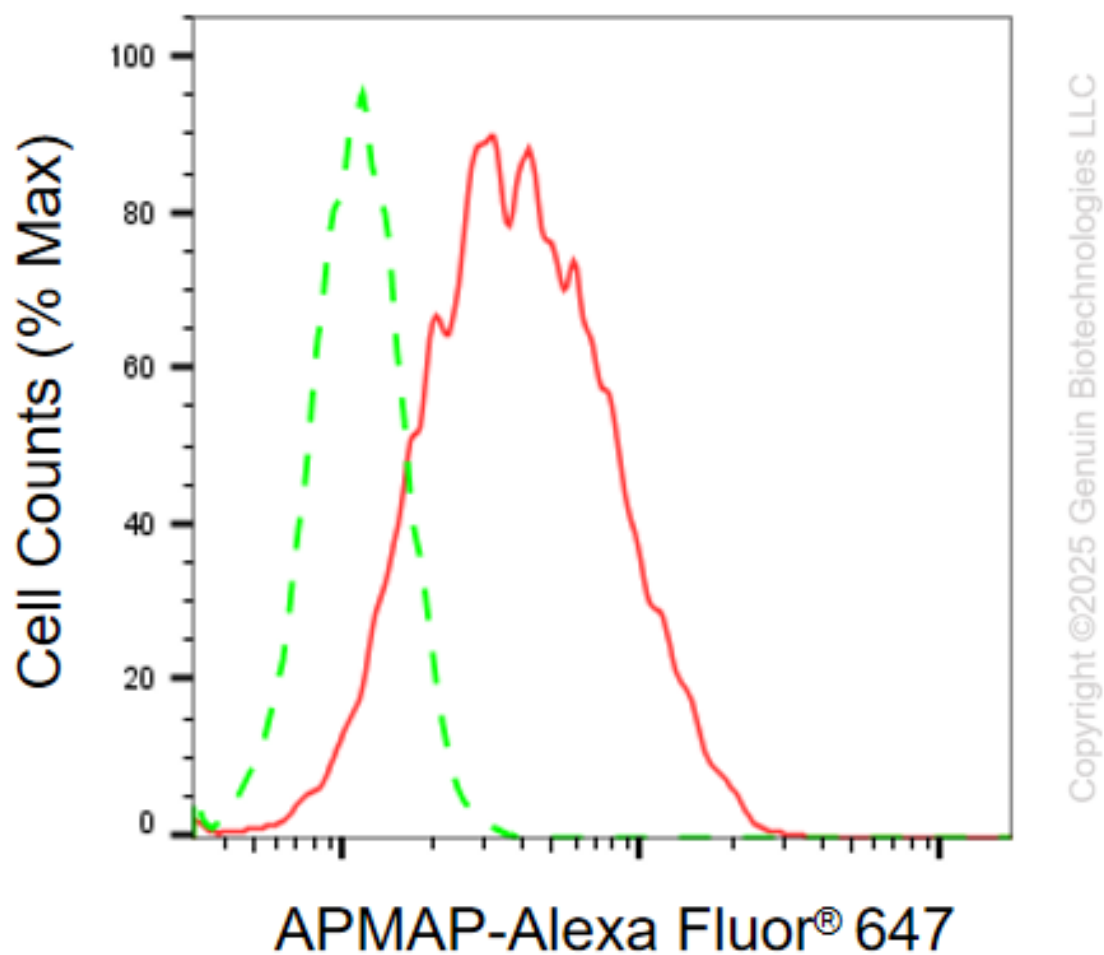
SUPPORT

SUPPORT@GENUINBIOTECH.COM
TEL: +1-540-855-7041

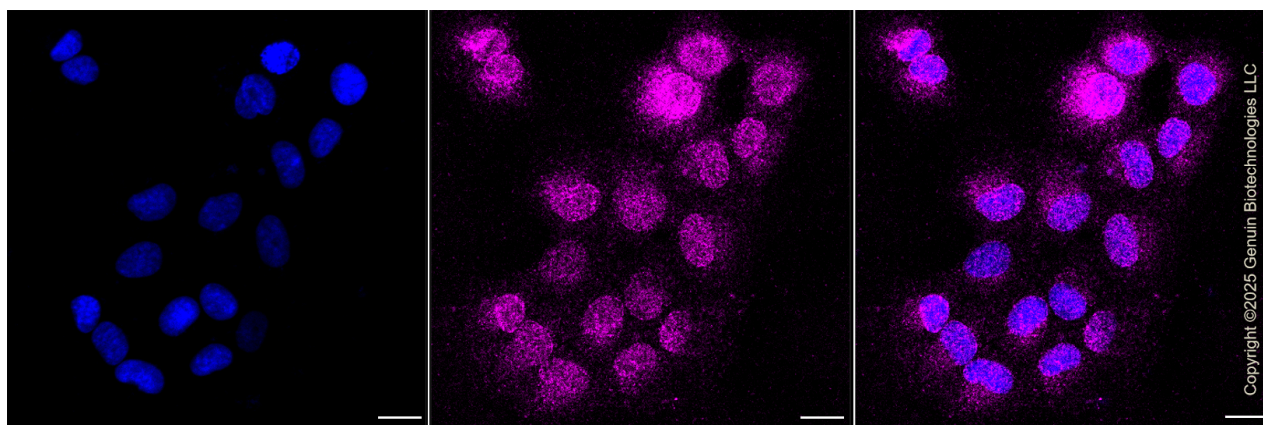
ORDERS

SALES@GENUINBIOTECH.COM
FAX: +1-540-855-7041

WWW.GENUINBIOTECH.COM



Flow cytometric analysis of APMAP expression in HT-1080 cells using anti-APMAP antibody (Cat#5342, 1:2,000). Green, isotype control; red, APMAP.

**SUPPORT**

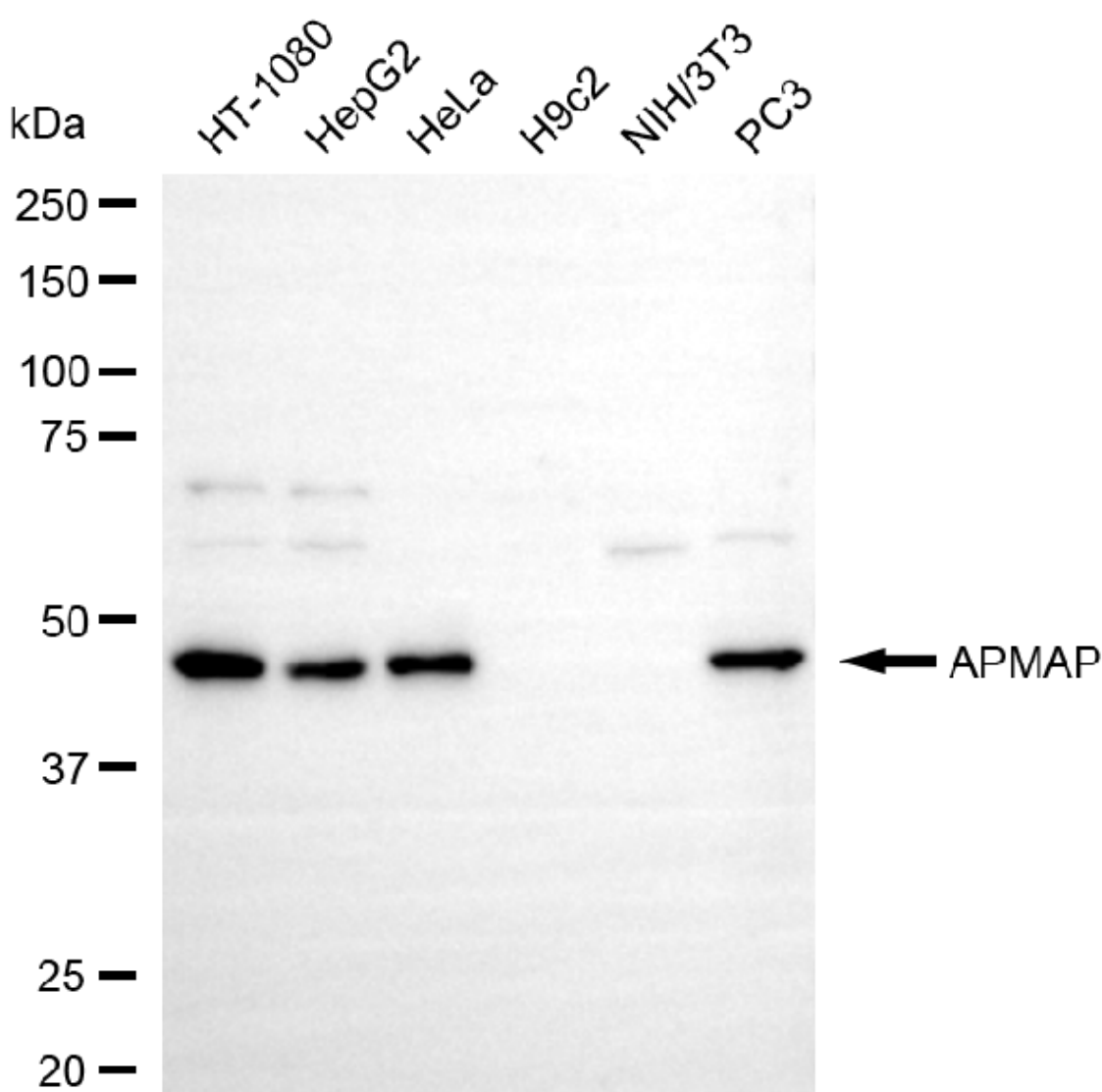
SUPPORT@GENUINBIOTECH.COM
TEL: +1-540-855-7041

ORDERS

SALES@GENUINBIOTECH.COM
FAX: +1-540-855-7041

WWW.GENUINBIOTECH.COM

Immunocytochemical staining of HT-1080 cells with anti-APMAP antibody (Cat#5342, 1:1,000). Nuclei were stained blue with DAPI; APMAP was stained magenta with Alexa Fluor® 647. Images were taken using Leica stellaris 5. Protein abundance based on laser Intensity and smart gain: Medium. Scale bar, 20 μ m.



Copyright ©2025 Genuin Biotechnologies LLC

Western blotting analysis using anti-APMAP antibody (Cat#5342). Total cell lysates (30 μ g) from various cell lines were loaded and separated by SDS-PAGE. The blot was incubated with anti-APMAP antibody (Cat#5342, 1:2,500) and HRP-conjugated goat anti-mouse secondary antibody (Cat#101, 1:20,000) respectively. Image was developed using NaQ™ ECL Substrate Kit (Cat#716).