

Anti-Argininosuccinate Lyase Mouse Monoclonal Antibody



Catalog #: 5348

Aliases

ASL; Argininosuccinate Lyase; ASAL; Arginosuccinase; EC 4.3.2.1; Argininosuccinase

Background

Gene Name: ASL

NCBI Gene Entry: [435](#)

UniProt Entry: [P04424](#)

Application Information

Molecular Weight: Predicted, 52 kDa; observed, 45 kDa

Clonality: Mouse monoclonal antibody

Clone ID: 25GB1080

Species Reactivity: Human

Applications Tested: Western blotting (WB), flow cytometry (FCM)

Immunogen

Recombinant protein of human ASL

Isotype

Mouse IgG1

Storage Buffer

Supplied in PBS (pH 7.4) containing 50% glycerol, and 0.02% sodium azide.

Storage

Store at -20 °C for one year.

Recommended Dilutions

Western Blotting (WB): 1:500-1:2,500

Flow Cytometry (FCM): 1:2,000

Note: This product is for research use only.

Validation Data

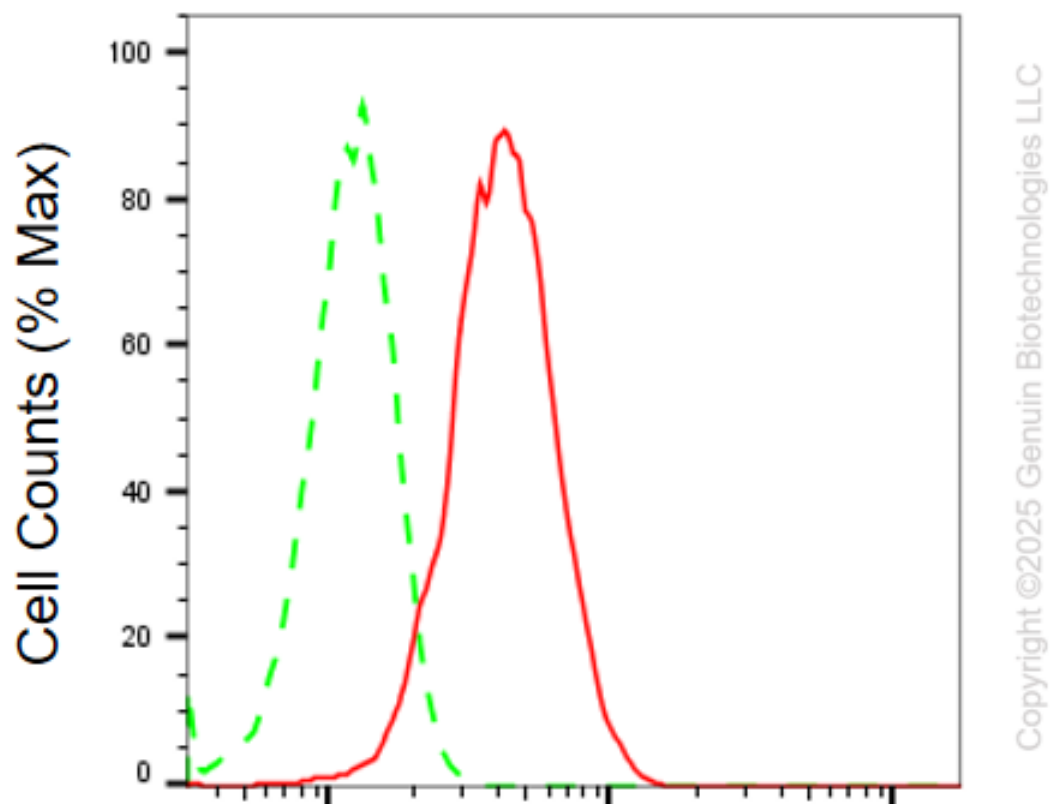
SUPPORT

SUPPORT@GENUINBIOTECH.COM
TEL: +1-540-855-7041

ORDERS

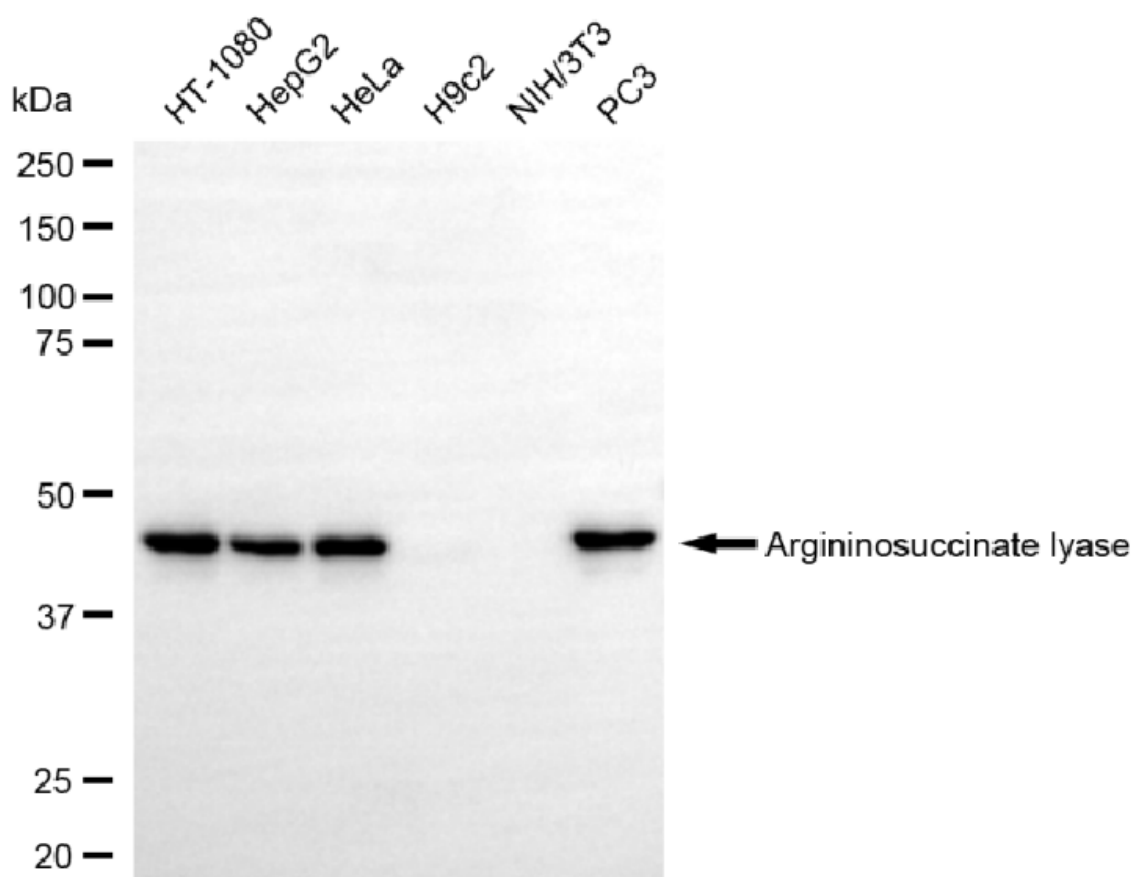
SALES@GENUINBIOTECH.COM
FAX: +1-540-855-7041

WWW.GENUINBIOTECH.COM



Argininosuccinate lyase-Alexa Fluor® 647

Flow cytometric analysis of Argininosuccinate lyase expression in HT-1080 cells using anti-Argininosuccinate lyase antibody (Cat#5348, 1:2,000). Green, isotype control; red, Argininosuccinate lyase.



Copyright ©2025 Genuin Biotechnologies LLC

Western blotting analysis using anti-argininosuccinate lyase antibody (Cat#5348). Total cell lysates (30 µg) from various cell lines were loaded and separated by SDS-PAGE. The blot was incubated with anti-argininosuccinate lyase antibody (Cat#5348, 1:2,500) and HRP-conjugated goat anti-mouse secondary antibody (Cat#101, 1:20,000) respectively. Image was developed using FeQ™ ECL Substrate Kit (Cat#226).