

## Catalog #: 5354

### Aliases

HADHA; Hydroxyacyl-CoA Dehydrogenase Trifunctional Multienzyme Complex Subunit Alpha; LCHAD; LCEH; MTPA; GBP; Hydroxyacyl-Coenzyme A Dehydrogenase/3-Ketoacyl-Coenzyme A Thiolase/Enoyl-Coenzyme A Hydratase (Trifunctional Protein), Alpha Subunit; Hydroxyacyl-CoA Dehydrogenase/3-Ketoacyl-CoA Thiolase/Enoyl-CoA Hydratase (Trifunctional Protein), Alpha Subunit; Mitochondrial Trifunctional Protein, Alpha Subunit; Trifunctional Enzyme Subunit Alpha, Mitochondrial; Long-Chain-3-Hydroxyacyl-CoA Dehydrogenase; Monolysocardiolipin Acyltransferase; Long-Chain 2-Enoyl-CoA Hydratase; 78 KDa Gastrin-Binding Protein; Gastrin-Binding Protein; HADH; Mitochondrial Long-Chain L-3-Hydroxyacyl-Coenzyme A (CoA) Dehydrogenase, Alpha Subunit; Mitochondrial Long-Chain 2-Enoyl-Coenzyme A (CoA) Hydratase, Alpha Subunit; 3-Ketoacyl-Coenzyme A (CoA) Thiolase, Alpha Subunit; Mitochondrial Trifunctional Enzyme, Alpha Subunit; 3-Oxoacyl-CoA Thiolase; EC 2.3.1.- ; TP-ALPHA; TP-Alpha; ECHA

### Background

Gene Name: HADHA

NCBI Gene Entry: [3030](#)

UniProt Entry: [P40939](#)

### Application Information

Molecular Weight: Predicted, 83 kDa; observed, 73 kDa

Clonality: Mouse monoclonal antibody

Clone ID: 25GB1110

Species Reactivity: Human, mouse, rat

Applications Tested: Western blotting (WB), flow cytometry (FCM)

### Immunogen

Recombinant protein of human HADHA

### Isotype

Mouse IgG1

### Storage Buffer

Supplied in PBS (pH 7.4) containing 50% glycerol, and 0.02% sodium azide.

### Storage

---

#### SUPPORT

SUPPORT@GENUINBIOTECH.COM  
TEL: +1-540-855-7041

#### ORDERS

SALES@GENUINBIOTECH.COM  
FAX: +1-540-855-7041

[WWW.GENUINBIOTECH.COM](http://WWW.GENUINBIOTECH.COM)

Store at -20 °C for one year.

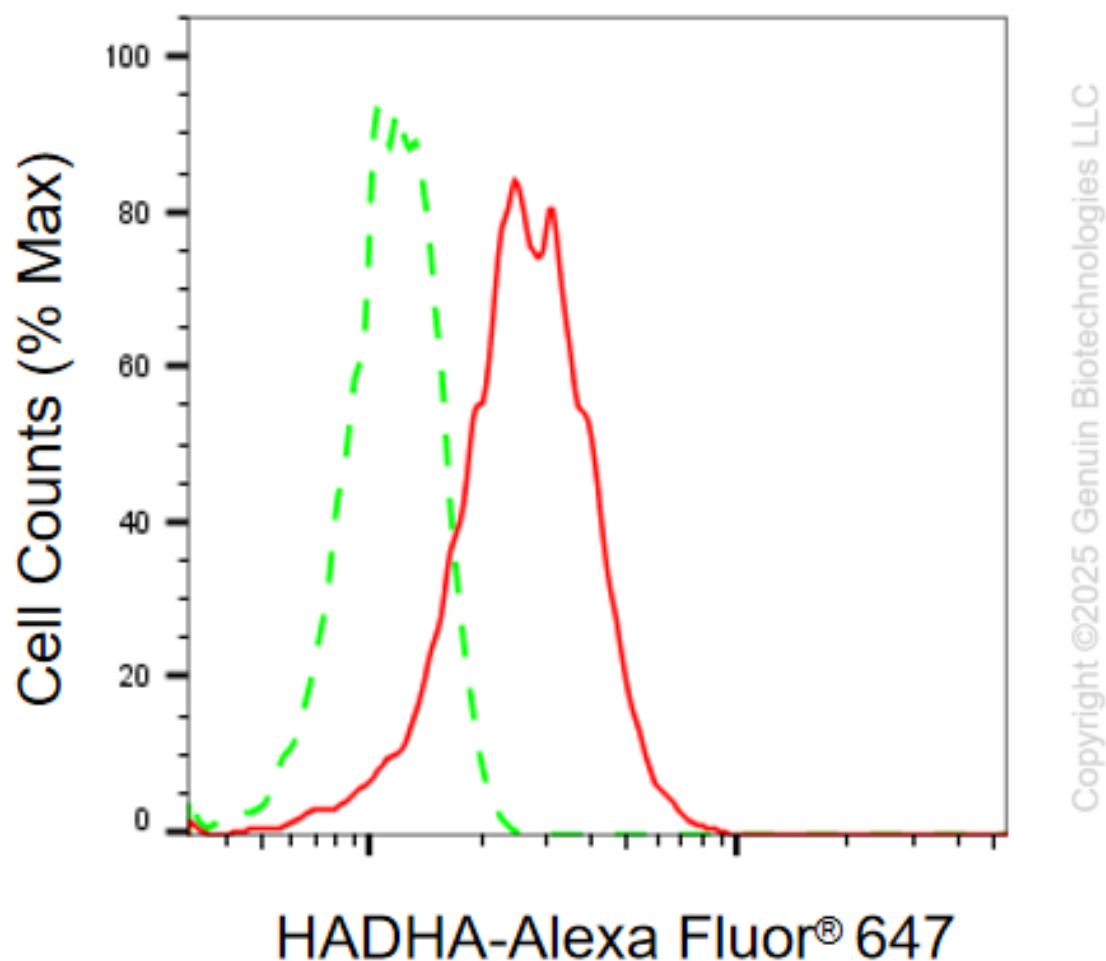
## Recommended Dilutions

Western Blotting (WB): 1:200-1:1,000

Flow Cytometry (FCM): 1:2,000

**Note:** This product is for research use only.

## Validation Data



Flow cytometric analysis of HADHA expression in HepG2 cells using anti-HADHA antibody (Cat#5354, 1:2,000). Green, isotype control; red, HADHA.

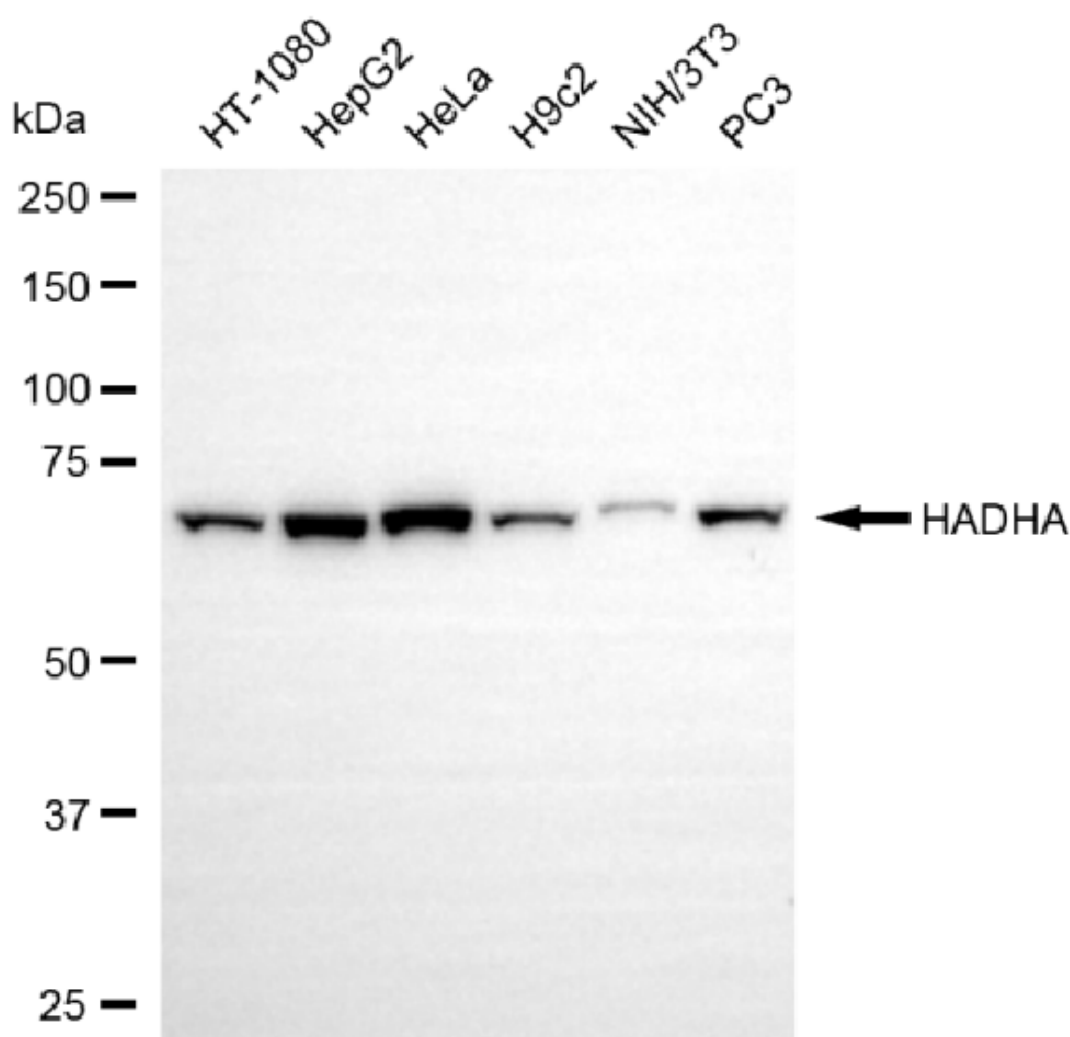
### SUPPORT

SUPPORT@GENUINBIOTECH.COM  
TEL: +1-540-855-7041

### ORDERS

SALES@GENUINBIOTECH.COM  
FAX: +1-540-855-7041

[WWW.GENUINBIOTECH.COM](http://WWW.GENUINBIOTECH.COM)



Copyright ©2025 Genuin Biotechnologies LLC

Western blotting analysis using anti-HADHA antibody (Cat#5354). Total cell lysates (30  $\mu$ g) from various cell lines were loaded and separated by SDS-PAGE. The blot was incubated with anti-HADHA antibody (Cat#5354, 1:1,000) and HRP-conjugated goat anti-mouse secondary antibody (Cat#101, 1:20,000) respectively. Image was developed using NaQ™ ECL Substrate Kit (Cat#716).

**SUPPORT**

SUPPORT@GENUINBIOTECH.COM  
TEL: +1-540-855-7041

**ORDERS**

SALES@GENUINBIOTECH.COM  
FAX: +1-540-855-7041

[WWW.GENUINBIOTECH.COM](http://WWW.GENUINBIOTECH.COM)