

Catalog #: 5359

Aliases

HARS1; Histidyl-TRNA Synthetase 1; HisRS; HARS; Histidine--TRNA Ligase, Cytoplasmic; Histidyl-TRNA Synthetase; EC 6.1.1.21; USH3B; HRS; Histidine TRNA Ligase 1, Cytoplasmic; Histidine Translase; Usher Syndrome 3B; Jo-1 Antigen; Jo-1 Antigen; CMT2W

Background

Gene Name: HARS1

NCBI Gene Entry: [3035](#)

UniProt Entry: [P12081](#)

Application Information

Molecular Weight: Predicted, 57 kDa; observed, 50 kDa

Clonality: Mouse monoclonal antibody

Clone ID: 25GB1135

Species Reactivity: Human

Applications Tested: Western blotting (WB), flow cytometry (FCM), immunocytochemistry (IC)

Immunogen

Recombinant protein of human HARS

Isotype

Mouse IgG1

Storage Buffer

Supplied in PBS (pH 7.4) containing 50% glycerol, and 0.02% sodium azide.

Storage

Store at -20 °C for one year.

Recommended Dilutions

Western Blotting (WB): 1:400-1:2,000

Flow Cytometry (FCM): 1:2,000

Immunocytochemistry (IC): 1:100-1:1,000

Note: This product is for research use only.

SUPPORT

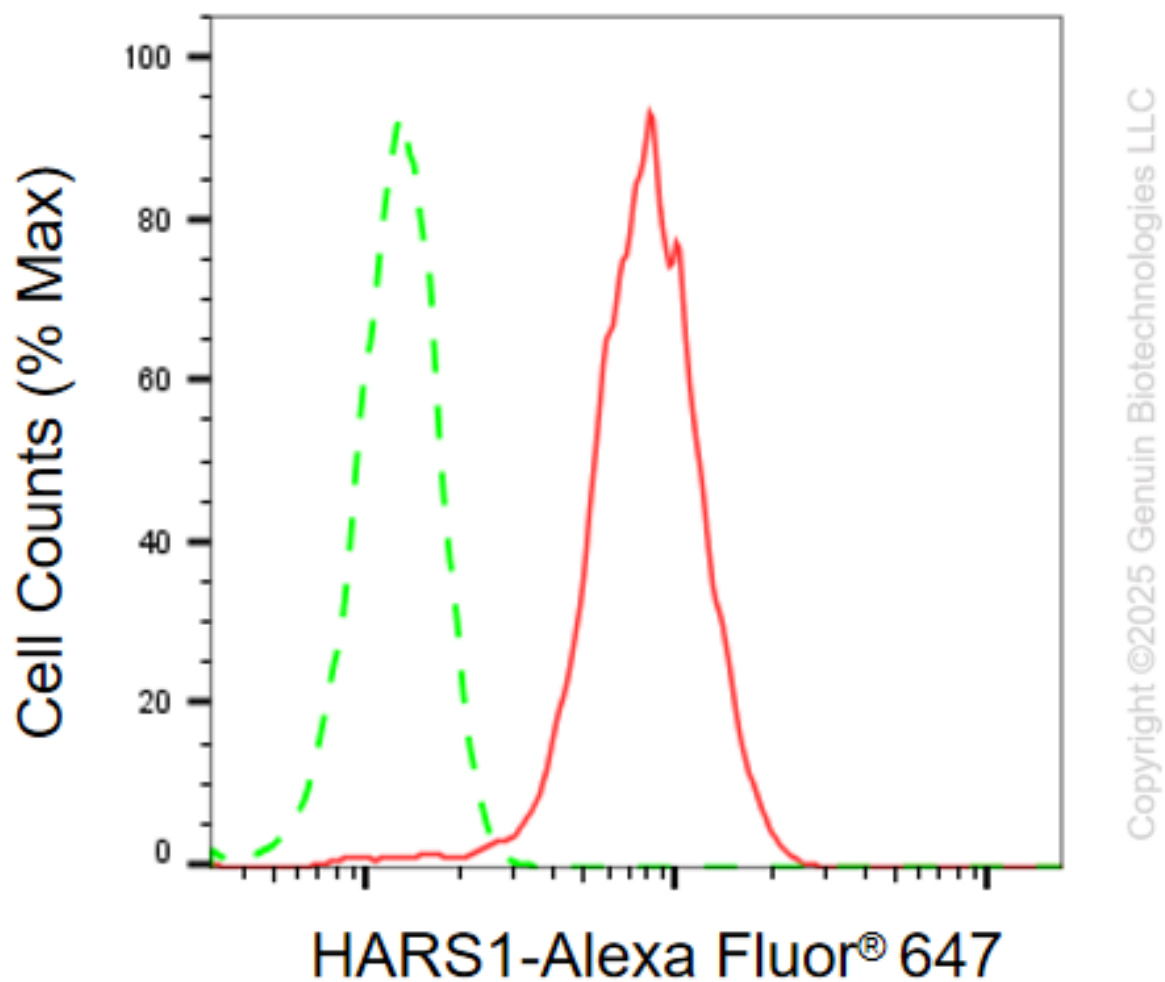
SUPPORT@GENUINBIOTECH.COM
TEL: +1-540-855-7041

ORDERS

SALES@GENUINBIOTECH.COM
FAX: +1-540-855-7041

WWW.GENUINBIOTECH.COM

Validation Data



Flow cytometric analysis of HARS1 expression in HepG2 cells using anti-HARS1 antibody (Cat#5359, 1:2,000). Green, isotype control; red, HARS1.

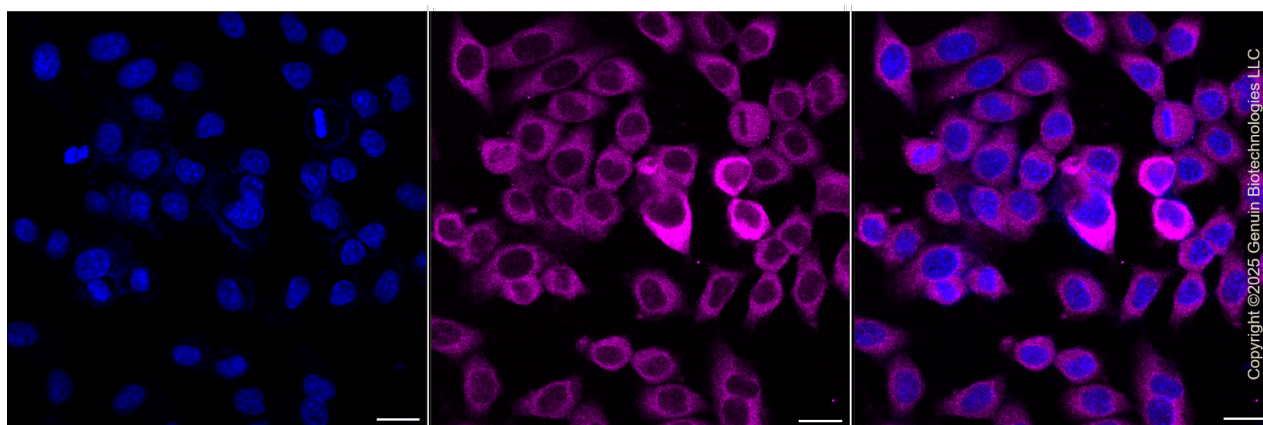
SUPPORT

SUPPORT@GENUINBIOTECH.COM
TEL: +1-540-855-7041

ORDERS

SALES@GENUINBIOTECH.COM
FAX: +1-540-855-7041

WWW.GENUINBIOTECH.COM



Immunocytochemical staining of HepG2 cells with anti-HARS1 antibody (Cat#5359, 1:1,000). Nuclei were stained blue with DAPI; HARS1 was stained magenta with Alexa Fluor® 647. Images were taken using Leica stellaris 5. Protein abundance based on laser Intensity and smart gain: Medium. Scale bar, 20 μ m.

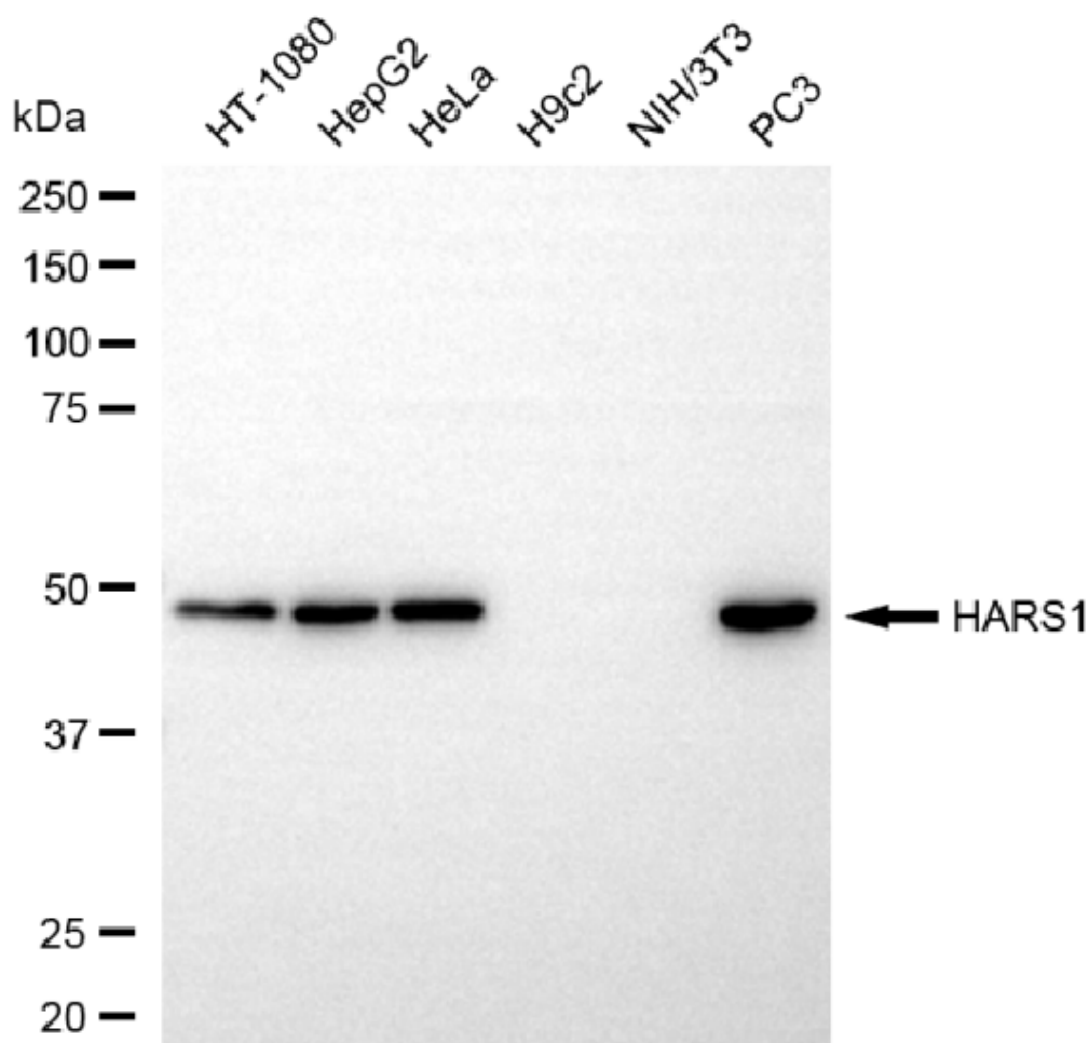
SUPPORT

SUPPORT@GENUINBIOTECH.COM
TEL: +1-540-855-7041

ORDERS

SALES@GENUINBIOTECH.COM
FAX: +1-540-855-7041

WWW.GENUINBIOTECH.COM



Copyright ©2025 Genuin Biotechnologies LLC

Western blotting analysis using anti-HARS1 antibody (Cat#5359). Total cell lysates (30 μ g) from various cell lines were loaded and separated by SDS-PAGE. The blot was incubated with anti-HARS1 antibody (Cat#5359, 1:2,000) and HRP-conjugated goat anti-mouse secondary antibody (Cat#101, 1:20,000) respectively. Image was developed using NaQTM ECL Substrate Kit (Cat#716).

SUPPORT

SUPPORT@GENUINBIOTECH.COM
TEL: +1-540-855-7041

ORDERS

SALES@GENUINBIOTECH.COM
FAX: +1-540-855-7041

WWW.GENUINBIOTECH.COM