

## Catalog #: 5368

## Aliases

ANXA6; Annexin A6; ANX6; 67 KDa Callectrin; Chromobindin-20; Lipocortin VI; Annexin-6; CPB-II; P68; P70; Testis Secretory Sperm-Binding Protein Li 198a; Calcium-Binding Protein P68; Annexin VI (P68); Calphobindin II; Calphobindin-II; Callectrin; Protein III; Annexin VI; CBP68

## Background

Gene Name: ANXA6

NCBI Gene Entry: [309](#)

UniProt Entry: [P08133](#)

## Application Information

Molecular Weight: Predicted, 76 kDa; observed, 70 kDa

Clonality: Rabbit monoclonal antibody

Clone ID: 25GB1170

Species Reactivity: Human, mouse, rat

Applications Tested: Western blotting (WB)

## Immunogen

Recombinant protein of human Annexin VI

## Isotype

Rabbit IgG

## Storage Buffer

Supplied in PBS (pH 7.4) containing 50% glycerol, and 0.02% sodium azide.

## Storage

Store at -20 °C for one year.

## Recommended Dilutions

Western Blotting (WB): 1:1,000-1:5,000

**Note:** This product is for research use only.

## Validation Data

---

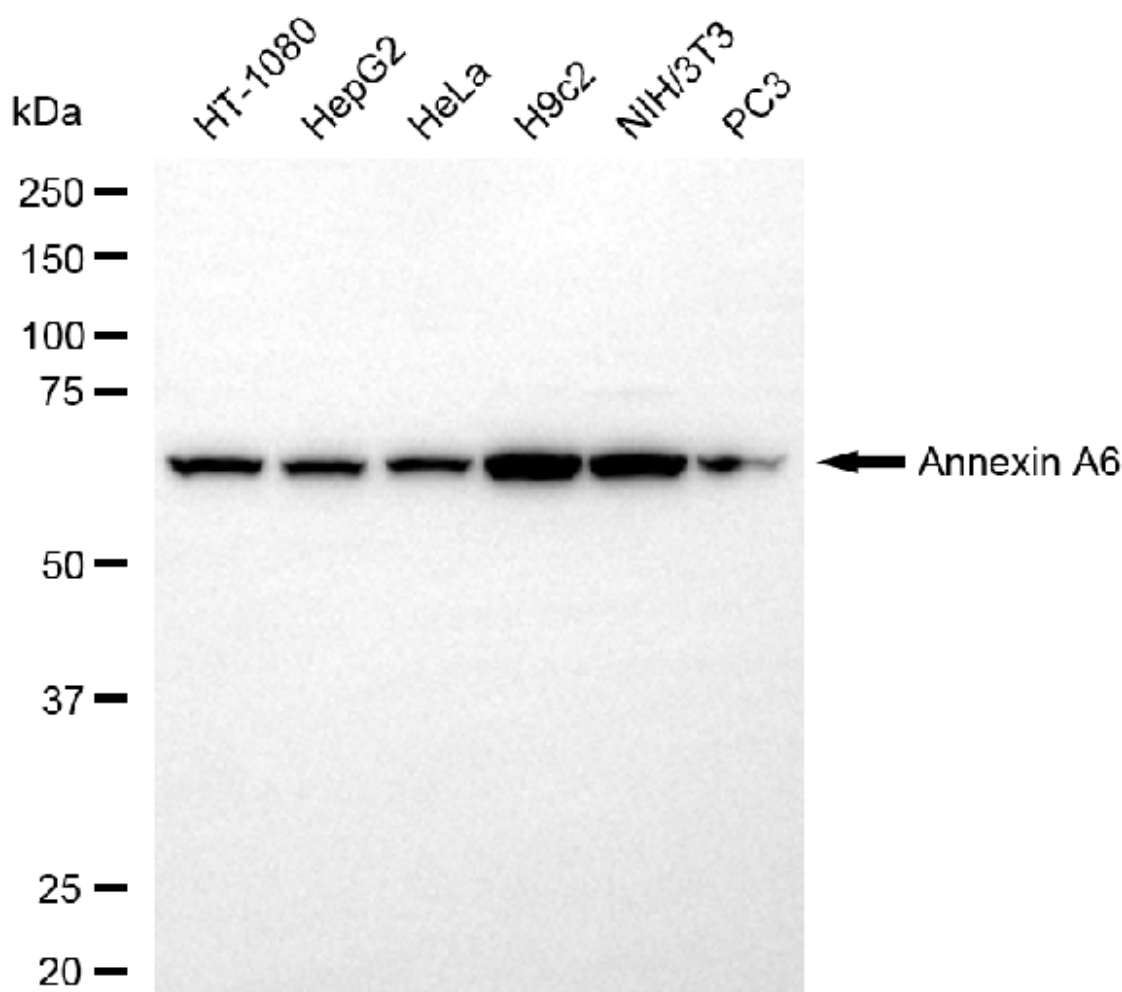
### SUPPORT

SUPPORT@GENUINBIOTECH.COM  
TEL: +1-540-855-7041

### ORDERS

SALES@GENUINBIOTECH.COM  
FAX: +1-540-855-7041

[WWW.GENUINBIOTECH.COM](http://WWW.GENUINBIOTECH.COM)



Copyright ©2025 Genuin Biotechnologies LLC

Western blotting analysis using anti-annexin A6 antibody (Cat#5368). Total cell lysates (20 µg) from various cell lines were loaded and separated by SDS-PAGE. The blot was incubated with anti-annexin A6 antibody (Cat#5368, 1:5,000) and HRP-conjugated goat anti-rabbit secondary antibody (Cat#201, 1:20,000) respectively. Image was developed using NaQ™ ECL Substrate Kit (Cat#716).

**SUPPORT**

SUPPORT@GENUINBIOTECH.COM  
TEL: +1-540-855-7041

**ORDERS**

SALES@GENUINBIOTECH.COM  
FAX: +1-540-855-7041

[WWW.GENUINBIOTECH.COM](http://WWW.GENUINBIOTECH.COM)