

Anti-Creatine Kinase B Mouse Monoclonal Antibody



Catalog #: 5376

Aliases

CKB; Creatine Kinase B; CKBB; Creatine Phosphokinase B-Type; Creatine Kinase Brain-Type; Creatine Kinase B Chain; Creatine Kinase B-Type; Brain Creatine Kinase; EC 2.7.3.2; CPK-B; B-CK; Epididymis Secretory Protein Li 29; Epididymis Luminal Protein 211; Creatine Kinase, Brain; Creatine Kinase Brain; HEL-S-29; EC 2.7.3; HEL-211; BCK

Background

Gene Name: CKB

NCBI Gene Entry: [1152](#)

UniProt Entry: [P12277](#)

Application Information

Molecular Weight: Predicted, 43 kDa; observed, 42 kDa

Clonality: Mouse monoclonal antibody

Clone ID: 25GB1210

Species Reactivity: Human

Applications Tested: Western blotting (WB)

Immunogen

Recombinant protein of human Creatine Kinase B

Isotype

Mouse IgG1

Storage Buffer

Supplied in PBS (pH 7.4) containing 50% glycerol, and 0.02% sodium azide.

Storage

Store at -20 °C for one year.

Recommended Dilutions

Western Blotting (WB): 1:400-1:2,000

Note: This product is for research use only.

Validation Data

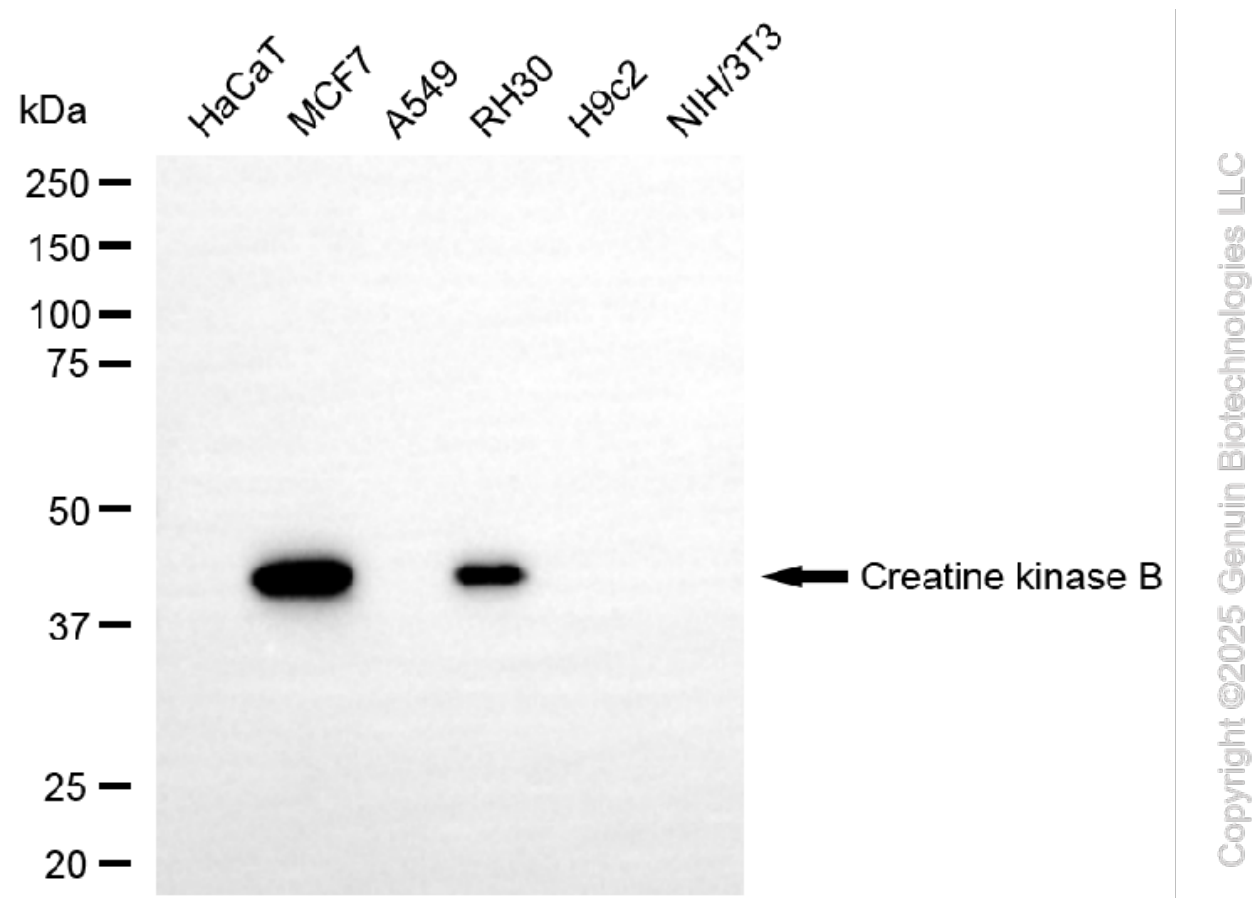
SUPPORT

SUPPORT@GENUINBIOTECH.COM
TEL: +1-540-855-7041

ORDERS

SALES@GENUINBIOTECH.COM
FAX: +1-540-855-7041

WWW.GENUINBIOTECH.COM



Western blotting analysis using anti-creatine kinase B antibody (Cat#5376). Total cell lysates (30 μ g) from various cell lines were loaded and separated by SDS-PAGE. The blot was incubated with anti-creatine kinase B antibody (Cat#5376, 1:2,000) and HRP-conjugated goat anti-mouse secondary antibody (Cat#101, 1:20,000) respectively. Image was developed using NaQ™ ECL Substrate Kit (Cat#716).

SUPPORT

SUPPORT@GENUINBIOTECH.COM
TEL: +1-540-855-7041

ORDERS

SALES@GENUINBIOTECH.COM
FAX: +1-540-855-7041

WWW.GENUINBIOTECH.COM