

Anti-Sp1 Transcription Factor Mouse Monoclonal Antibody



Catalog #: 5379

Aliases

SP1; Sp1 Transcription Factor; Transcription Factor Sp1; Specificity Protein 1; TSFP1

Background

Gene Name: SP1

NCBI Gene Entry: [6667](#)

UniProt Entry: [P08047](#)

Application Information

Molecular Weight: Predicted, 81 kDa; observed, 90 kDa

Clonality: Mouse monoclonal antibody

Clone ID: 25GB1225

Species Reactivity: Human

Applications Tested: Western blotting (WB), flow cytometry (FCM), immunocytochemistry (IC)

Immunogen

Recombinant protein of human SP1

Isotype

Mouse IgG1

Storage Buffer

Supplied in PBS (pH 7.4) containing 50% glycerol, and 0.02% sodium azide.

Storage

Store at -20 °C for one year.

Recommended Dilutions

Western Blotting (WB): 1:400-1:2,000

Flow Cytometry (FCM): 1:2,000

Immunocytochemistry (IC): 1:100-1:1,000

Note: This product is for research use only.

Validation Data

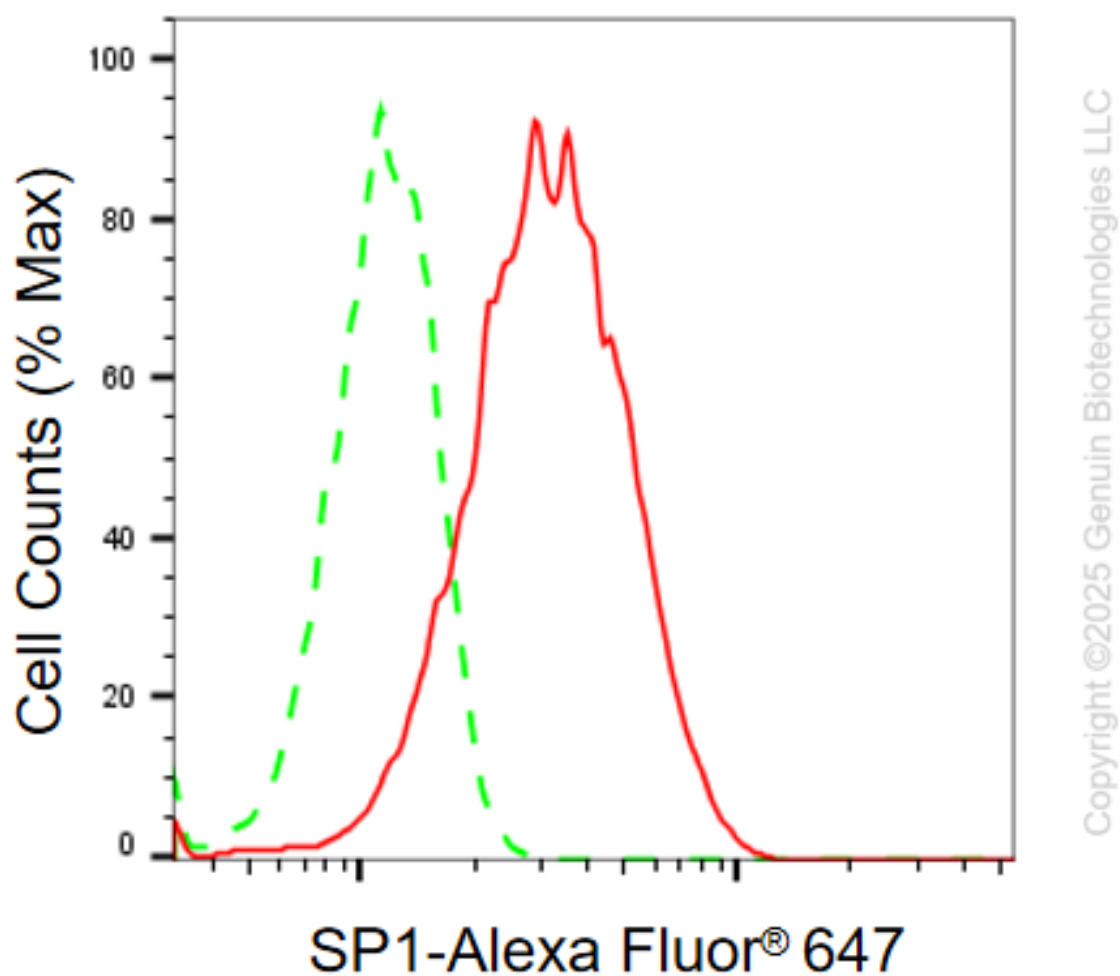
SUPPORT

SUPPORT@GENUINBIOTECH.COM
TEL: +1-540-855-7041

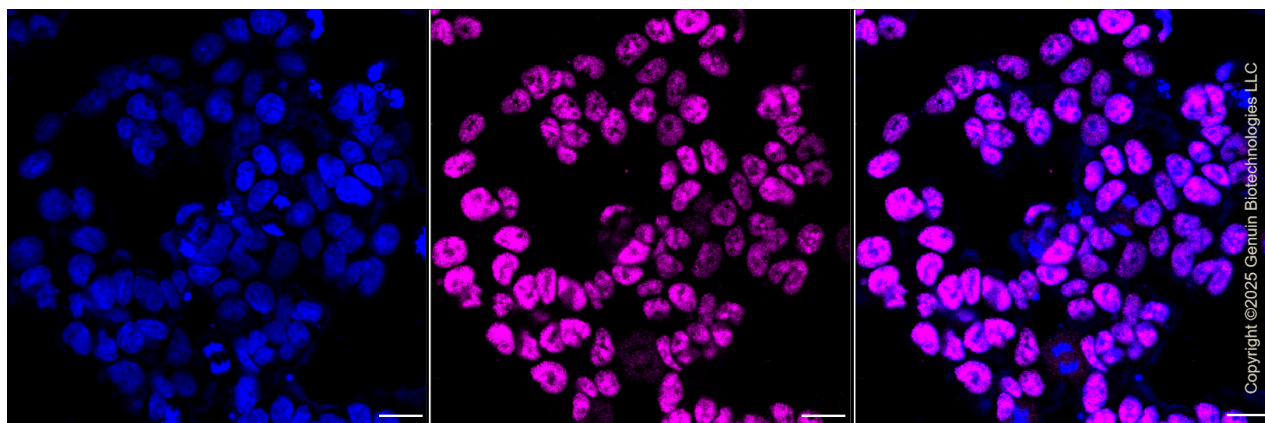
ORDERS

SALES@GENUINBIOTECH.COM
FAX: +1-540-855-7041

WWW.GENUINBIOTECH.COM



Flow cytometric analysis of SP1 expression in HAP-1 cells using anti-SP1 antibody (Cat#5379, 1:2,000). Green, isotype control; red, SP1.



Immunocytochemical staining of HAP1 cells with anti-SP1 antibody (Cat#5379, 1:1,000). Nuclei

SUPPORT

SUPPORT@GENUINBIOTECH.COM
TEL: +1-540-855-7041

ORDERS

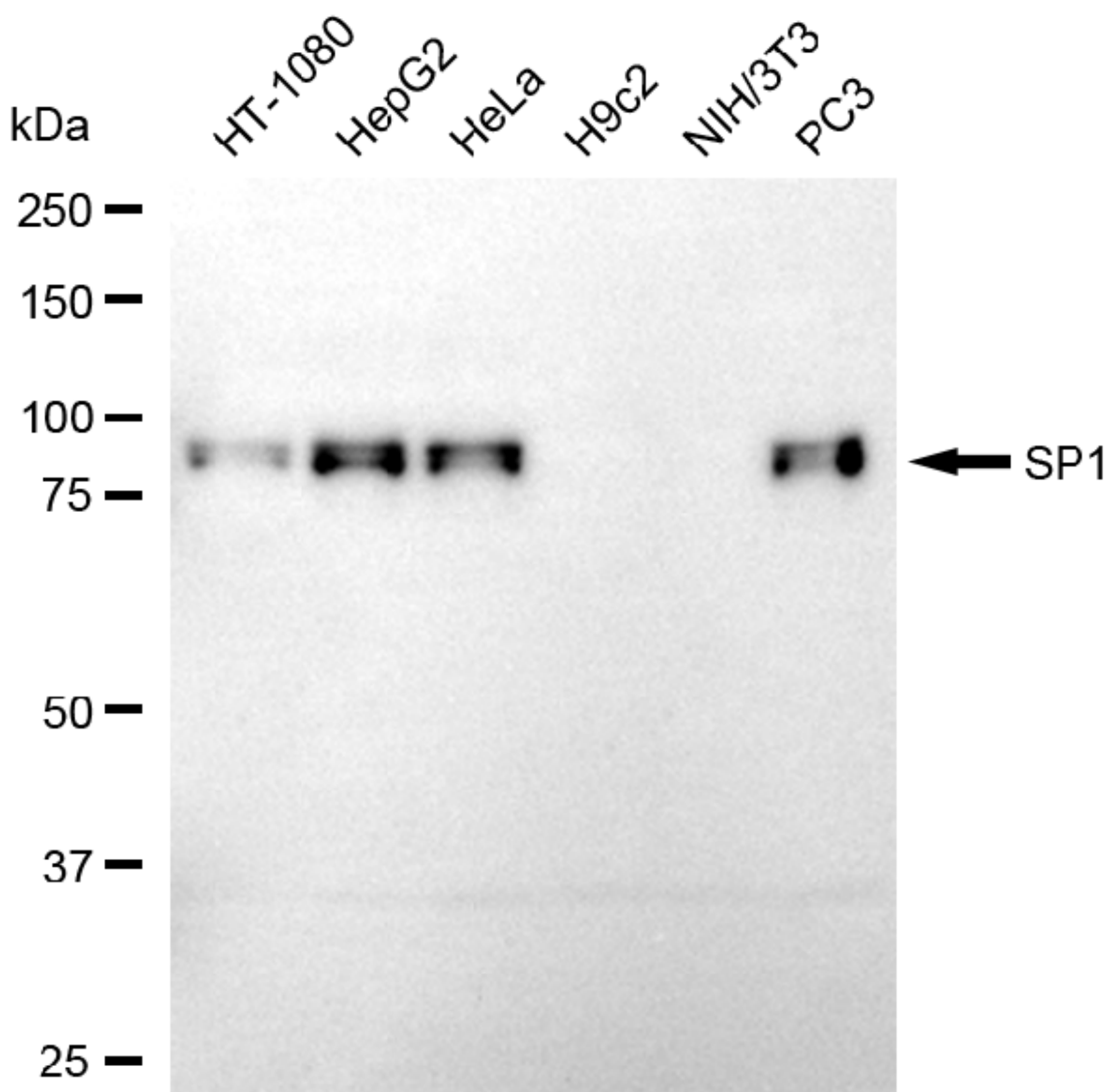
SALES@GENUINBIOTECH.COM
FAX: +1-540-855-7041

WWW.GENUINBIOTECH.COM

Anti-Sp1 Transcription Factor Mouse Monoclonal Antibody

PAGE 3

were stained blue with DAPI; SP1 was stained magenta with Alexa Fluor® 647. Images were taken using Leica stellaris 5. Protein abundance based on laser Intensity and smart gain: Medium. Scale bar, 20 µm.



Copyright ©2025 Genuin Biotechnologies LLC

Western blotting analysis using anti-SP1 antibody (Cat#5379). Total cell lysates (30 µg) from various cell lines were loaded and separated by SDS-PAGE. The blot was incubated with anti-SP1 antibody (Cat#5379, 1:2,000) and HRP-conjugated goat anti-mouse secondary antibody (Cat#101, 1:20,000) respectively. Image was developed using FeQ™ ECL Substrate Kit (Cat#226).

SUPPORT

SUPPORT@GENUINBIOTECH.COM
TEL: +1-540-855-7041

ORDERS

SALES@GENUINBIOTECH.COM
FAX: +1-540-855-7041

WWW.GENUINBIOTECH.COM