

Catalog #: 5385

Aliases

SUMO1; Small Ubiquitin Like Modifier 1; SMT3H3; SMT3C; GMP1; SUMO-1; OFC10; PIC1; UBL1; Ubiquitin-Homology Domain Protein PIC1; Small Ubiquitin-Related Modifier 1; Ubiquitin-Like Protein SMT3C; Ubiquitin-Like Protein UBL1; SMT3 Homolog 3; Sentrin; SMT3 Suppressor Of Mif Two 3 Homolog 1 (S. Cerevisiae); SMT3 Suppressor Of Mif Two 3 Homolog 1 (Yeast); SMT3 Suppressor Of Mif Two 3 Homolog 1; Ubiquitin-Like 1 (Sentrin); GAP Modifying Protein 1; GAP-Modifying Protein 1; SENP2; Smt3C; DAP1; SMT3

Background

Gene Name: SUMO1

NCBI Gene Entry: [7341](#)

UniProt Entry: [P63165](#)

Application Information

Molecular Weight: Predicted, 12 kDa; observed, 75 kDa

Clonality: Mouse monoclonal antibody

Clone ID: 25GB1255

Species Reactivity: Human, mouse, rat

Applications Tested: Western blotting (WB)

Immunogen

Recombinant protein of human SUMO1

Isotype

Mouse IgG1

Storage Buffer

Supplied in PBS (pH 7.4) containing 50% glycerol, and 0.02% sodium azide.

Storage

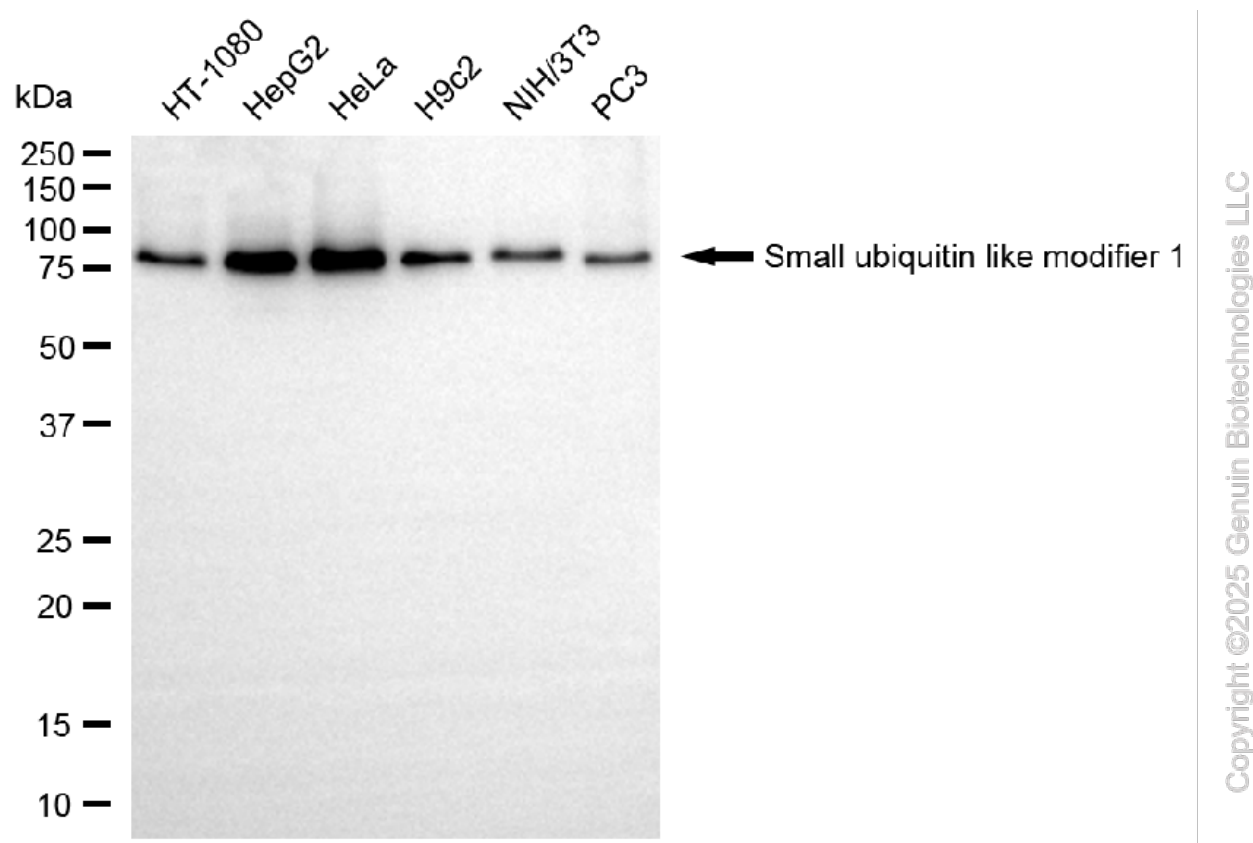
Store at -20 °C for one year.

Recommended Dilutions

Western Blotting (WB): 1:500-1:2,500

Note: This product is for research use only.

Validation Data



Western blotting analysis using anti-small ubiquitin like modifier 1 antibody (Cat#5385). Total cell lysates (30 µg) from various cell lines were loaded and separated by SDS-PAGE. The blot was incubated with anti-small ubiquitin like modifier 1 antibody (Cat#5385, 1:2,500) and HRP-conjugated goat anti-mouse secondary antibody (Cat#101, 1:20,000) respectively. Image was developed using FeQ™ ECL Substrate Kit (Cat#226).

SUPPORT

SUPPORT@GENUINBIOTECH.COM
TEL: +1-540-855-7041

ORDERS

SALES@GENUINBIOTECH.COM
FAX: +1-540-855-7041

WWW.GENUINBIOTECH.COM