

# Anti-Lin-28 Homolog B Mouse Monoclonal Antibody



**Catalog #: 5387**

## Aliases

LIN28B; Lin-28 Homolog B; CSDD2; Protein Lin-28 Homolog B; FLJ16517; Lin-28B; Lin-28 Homolog B (C. Elegans); Lin-28.2

## Background

Gene Name: LIN28B

NCBI Gene Entry: [389421](#)

UniProt Entry: [Q6ZN17](#)

## Application Information

Molecular Weight: Predicted, 27 kDa; observed, 32 kDa

Clonality: Mouse monoclonal antibody

Clone ID: 25GB1265

Species Reactivity: Human

Applications Tested: Western blotting (WB)

## Immunogen

Recombinant protein of human SERPINB1

## Isotype

Mouse IgG1

## Storage Buffer

Supplied in PBS (pH 7.4) containing 50% glycerol, and 0.02% sodium azide.

## Storage

Store at -20 °C for one year.

## Recommended Dilutions

Western Blotting (WB): 1:1,000-1:5,000

**Note:** This product is for research use only.

## Validation Data

---

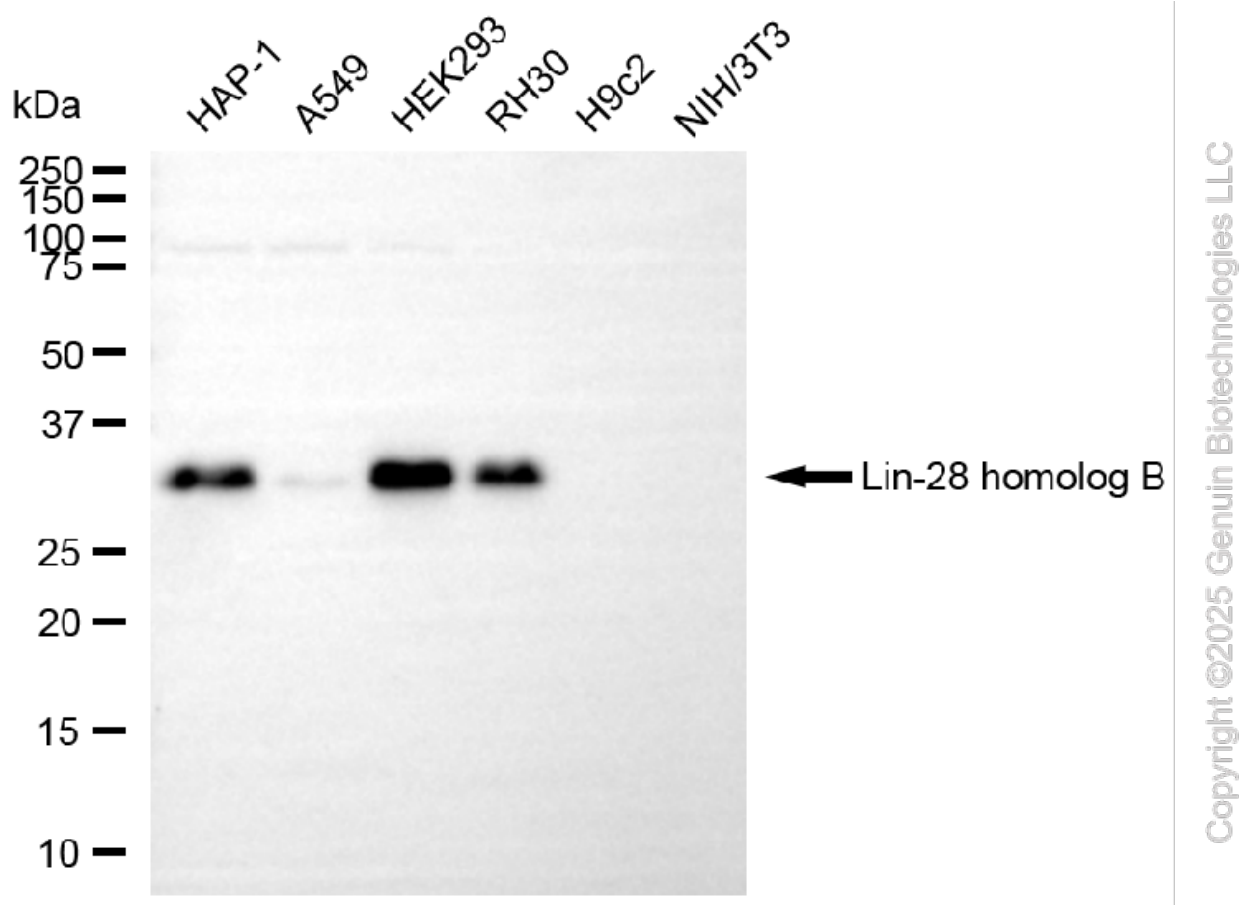
### SUPPORT

SUPPORT@GENUINBIOTECH.COM  
TEL: +1-540-855-7041

### ORDERS

SALES@GENUINBIOTECH.COM  
FAX: +1-540-855-7041

[WWW.GENUINBIOTECH.COM](http://WWW.GENUINBIOTECH.COM)



Western blotting analysis using anti-lin-28 homolog B antibody (Cat#5387). Total cell lysates (30  $\mu$ g) from various cell lines were loaded and separated by SDS-PAGE. The blot was incubated with anti-lin-28 homolog B antibody (Cat#5387, 1:5,000) and HRP-conjugated goat anti-mouse secondary antibody (Cat#101, 1:20,000) respectively. Image was developed using FeQ™ ECL Substrate Kit (Cat#226).