

Catalog #: 5391

Aliases

RB1; RB Transcriptional Corepressor 1; PPP1R130; RB; Protein Phosphatase 1, Regulatory Subunit 130; Prepro-Retinoblastoma-Associated Protein; Retinoblastoma-Associated Protein; Retinoblastoma 1; P110-RB1; P105-Rb; Pp110; OSRC; PRb; Retinoblastoma Susceptibility Protein; Osteosarcoma; Rb

Background

Gene Name: RB1

NCBI Gene Entry: [5925](#)

UniProt Entry: [P06400](#)

Application Information

Molecular Weight: Predicted, 106 kDa; observed, 115 kDa

Clonality: Rabbit polyclonal antibody

Species Reactivity: Human

Applications Tested: Western blotting (WB)

Immunogen

A synthesized peptide derived from human RB1

Isotype

Rabbit IgG

Storage Buffer

Supplied in PBS (pH 7.4) containing 50% glycerol, and 0.02% sodium azide.

Storage

Store at -20 °C for one year.

Recommended Dilutions

Western blotting (WB): 1:400-1:2,000

Note: This product is for research use only.

Validation Data

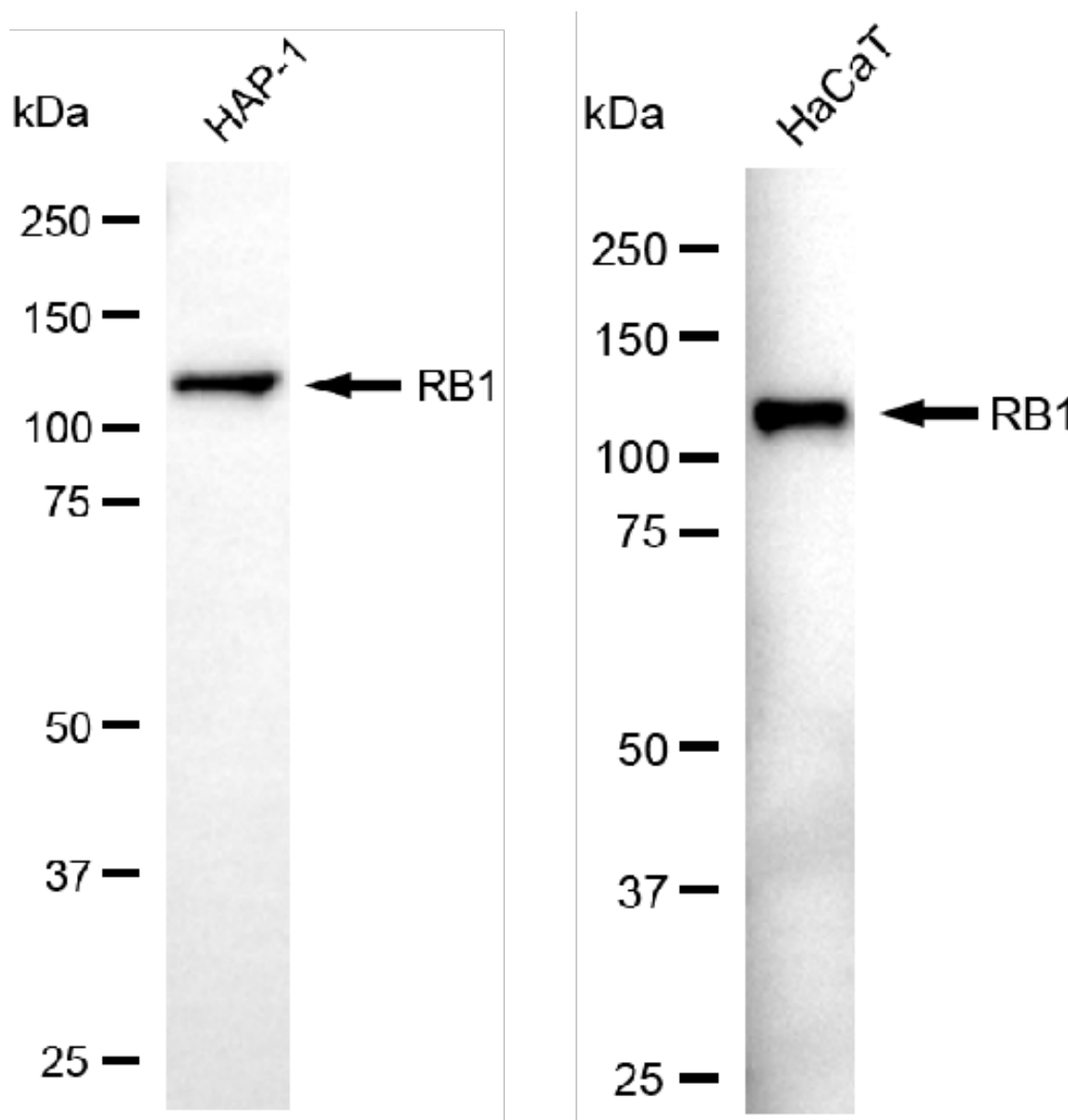
SUPPORT

SUPPORT@GENUINBIOTECH.COM
TEL: +1-540-855-7041

ORDERS

SALES@GENUINBIOTECH.COM
FAX: +1-540-855-7041

WWW.GENUINBIOTECH.COM



Copyright ©2025 Genuin Biotechnologies LLC

Western blotting analysis using anti-RB1 antibody (Cat#5391). Total cell lysates (30 μ g) from various cell lines were loaded and separated by SDS-PAGE. The blot was incubated with anti-RB1 antibody (Cat#5391, 1:2,000) and HRP-conjugated goat anti rabbit secondary antibody (Cat#201, 1:20,000) respectively. Image was developed using FeQ™ ECL Substrate Kit (Cat#226).

SUPPORT

SUPPORT@GENUINBIOTECH.COM
TEL: +1-540-855-7041

ORDERS

SALES@GENUINBIOTECH.COM
FAX: +1-540-855-7041

WWW.GENUINBIOTECH.COM