

## Catalog #: 5395

### Aliases

CFAP298; Cilia And Flagella Associated Protein 298; C21orf48; C21orf59; DNAAF16; CILD26; FBB18; Kur; Cilia- And Flagella-Associated Protein 298; Dynein Axonemal Assembly Factor 16; Protein Kurly Homolog; FLJ20467; Prostate Cancer Upregulated Protein 1; Chromosome 21 Open Reading Frame 48; Chromosome 21 Open Reading Frame 59; Kurly Homolog (Zebrafish); UPF0769 Protein C21orf59; Kurly Homolog

### Background

Gene Name: CFAP298

NCBI Gene Entry: [56683](#)

UniProt Entry: [P57076](#)

### Application Information

Molecular Weight: Predicted, 33 kDa; observed, 33 kDa

Clonality: Mouse monoclonal antibody

Clone ID: 25GB1305

Species Reactivity: Human

Applications Tested: Western blotting (WB)

### Immunogen

Recombinant protein of human C21orf59

### Isotype

Mouse IgG1

### Storage Buffer

Supplied in PBS (pH 7.4) containing 50% glycerol, and 0.02% sodium azide.

### Storage

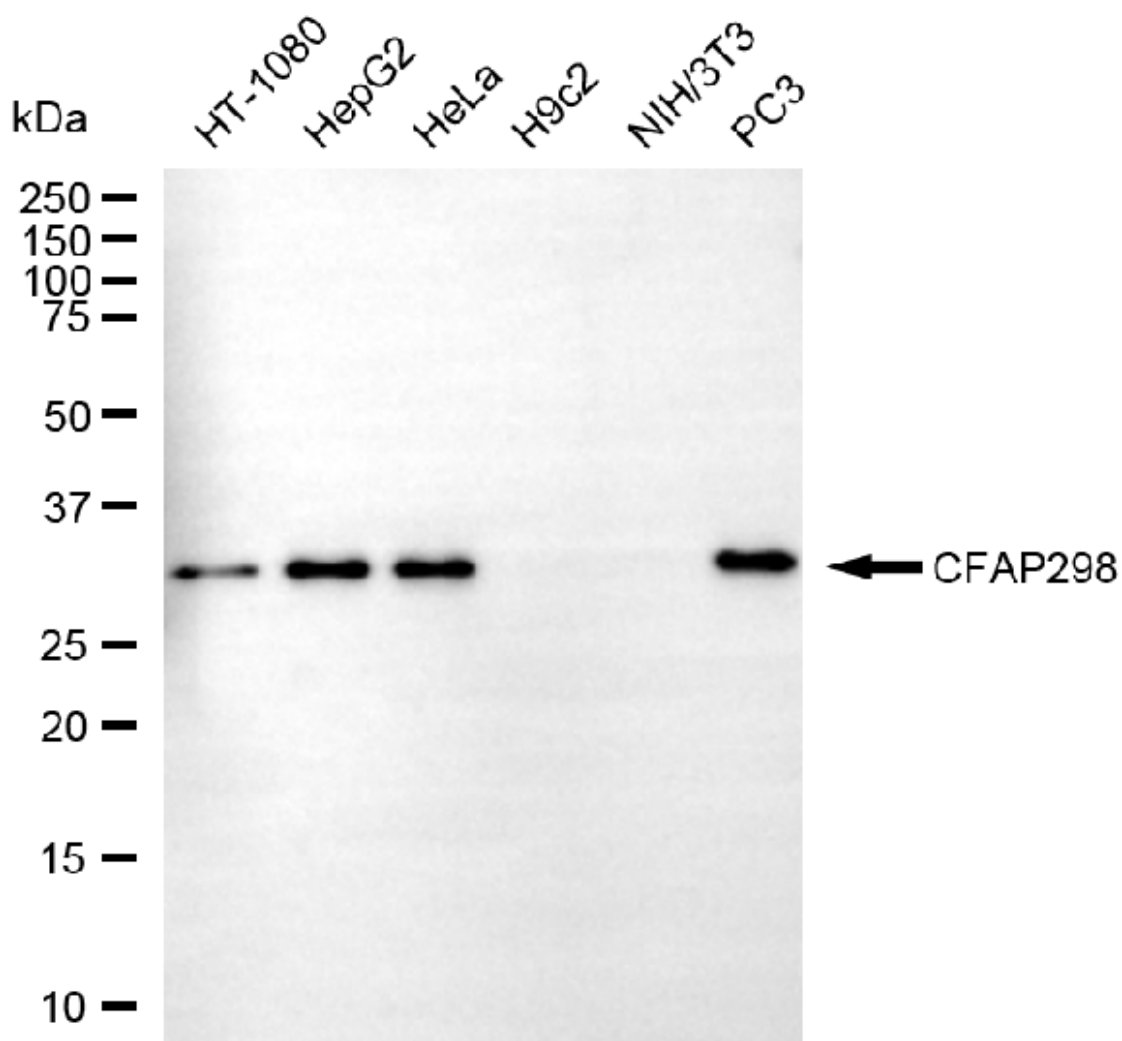
Store at -20 °C for one year.

### Recommended Dilutions

Western Blotting (WB): 1:500-1:2,500

**Note:** This product is for research use only.

## Validation Data



Copyright ©2025 Genuin Biotechnologies LLC

Western blotting analysis using anti-CFAP298 antibody (Cat#5395). Total cell lysates (30  $\mu$ g) from various cell lines were loaded and separated by SDS-PAGE. The blot was incubated with anti-CFAP298 antibody (Cat#5395, 1:2,500) and HRP-conjugated goat anti-mouse secondary antibody (Cat#101, 1:20,000) respectively. Image was developed using FeQ™ ECL Substrate Kit (Cat#226).

## SUPPORT

SUPPORT@GENUINBIOTECH.COM  
TEL: +1-540-855-7041

## ORDERS

SALES@GENUINBIOTECH.COM  
FAX: +1-540-855-7041

WWW.GENUINBIOTECH.COM