

## Catalog #: 5396

### Aliases

CNDP2; Carnosine Dipeptidase 2; CPGL; CN2; Peptidase A; HsT2298; PEPA; CNDP Dipeptidase 2 (Metallopeptidase M20 Family); Glutamate Carboxypeptidase-Like Protein 1; Cytosolic Non-Specific Dipeptidase; Cytosolic Nonspecific Dipeptidase; Carnosine Dipeptidase II; Threonyl Dipeptidase; Carnosinase-2; FLJ10830; HEL-S-13; Epididymis Secretory Protein Li 13; CNDP Dipeptidase; EC 3.4.13.18

### Background

Gene Name: CNDP2

NCBI Gene Entry: [55748](#)

UniProt Entry: [Q96KP4](#)

### Application Information

Molecular Weight: Predicted, 53 kDa; observed, 53 kDa

Clonality: Mouse monoclonal antibody

Clone ID: 25GB1310

Species Reactivity: Human, mouse, rat

Applications Tested: Western blotting (WB)

### Immunogen

Recombinant protein of human SUMO1

### Isotype

Mouse IgG1

### Storage Buffer

Supplied in PBS (pH 7.4) containing 50% glycerol, and 0.02% sodium azide.

### Storage

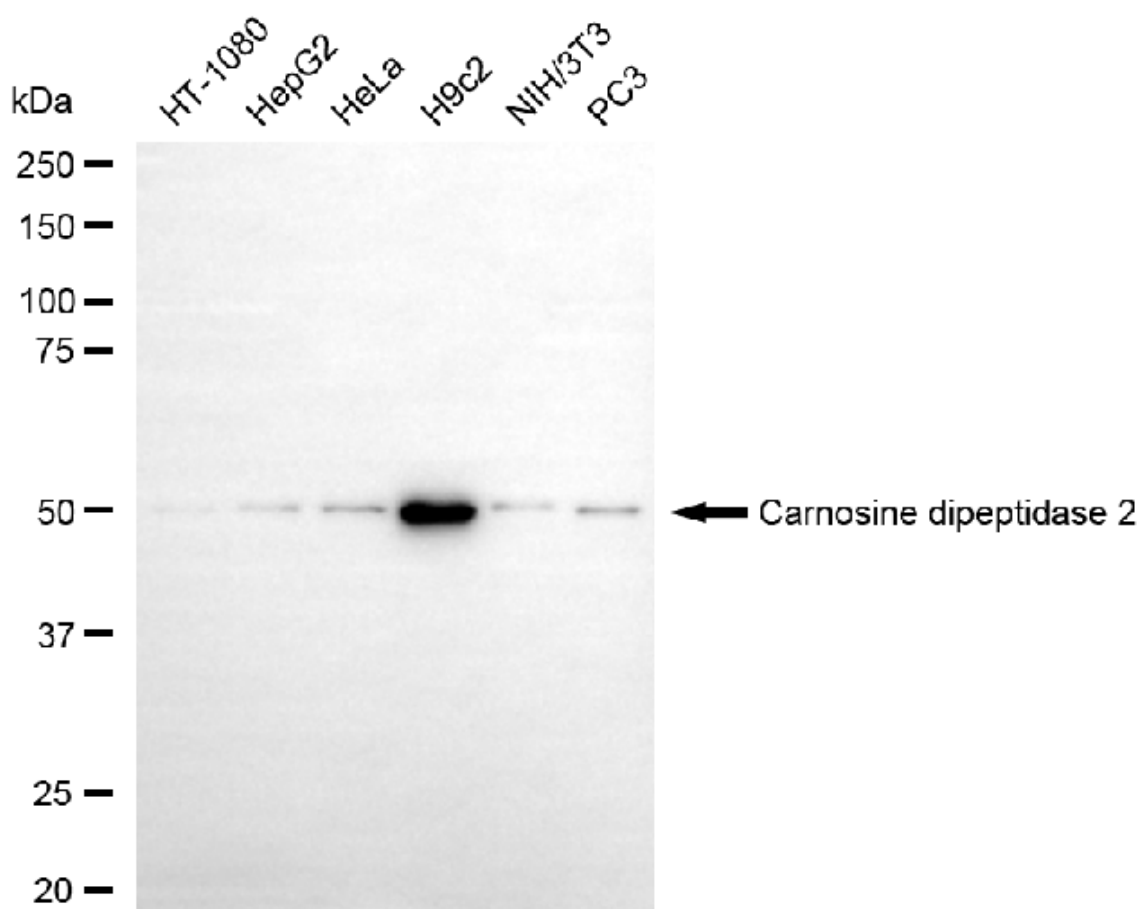
Store at -20 °C for one year.

### Recommended Dilutions

Western Blotting (WB): 1:500-1:2,500

**Note:** This product is for research use only.

## Validation Data



Copyright ©2025 Genuin Biotechnologies LLC

Western blotting analysis using anti-carnosine dipeptidase 2 antibody (Cat#5396). Total cell lysates (30 µg) from various cell lines were loaded and separated by SDS-PAGE. The blot was incubated with anti-carnosine dipeptidase 2 antibody (Cat#5396, 1:2,500) and HRP-conjugated goat anti-mouse secondary antibody (Cat#101, 1:20,000) respectively. Image was developed using FeQ™ ECL Substrate Kit (Cat#226).

## SUPPORT

SUPPORT@GENUINBIOTECH.COM  
TEL: +1-540-855-7041

## ORDERS

SALES@GENUINBIOTECH.COM  
FAX: +1-540-855-7041

WWW.GENUINBIOTECH.COM