

Catalog #: 5399

Aliases

ATP5F1C; ATP Synthase F1 Subunit Gamma; ATP5CL1; ATP5C1; ATP5C; ATP Synthase, H⁺ Transporting, Mitochondrial F1 Complex, Gamma Polypeptide 1; ATP Synthase Subunit Gamma, Mitochondrial; F-ATPase Gamma Subunit; Mitochondrial ATP Synthase, Gamma Subunit 1; ATP Synthase Gamma Chain, Mitochondrial

Background

Gene Name: ATP5F1C

NCBI Gene Entry: [509](#)

UniProt Entry: [P36542](#)

Application Information

Molecular Weight: Predicted, 33 kDa; observed, 33 kDa

Clonality: Mouse monoclonal antibody

Clone ID: 25GB1325

Species Reactivity: Human

Applications Tested: Western blotting (WB), flow cytometry (FCM), immunocytochemistry (IC)

Immunogen

Recombinant protein of human ATP5C1

Isotype

Mouse IgG1

Storage Buffer

Supplied in PBS (pH 7.4) containing 50% glycerol, and 0.02% sodium azide.

Storage

Store at -20 °C for one year.

Recommended Dilutions

Western Blotting (WB): 1:500-1:2,500

Flow Cytometry (FCM): 1:1,000

Immunocytochemistry (IC): 1:100-1:1,000

SUPPORT

SUPPORT@GENUINBIOTECH.COM
TEL: +1-540-855-7041

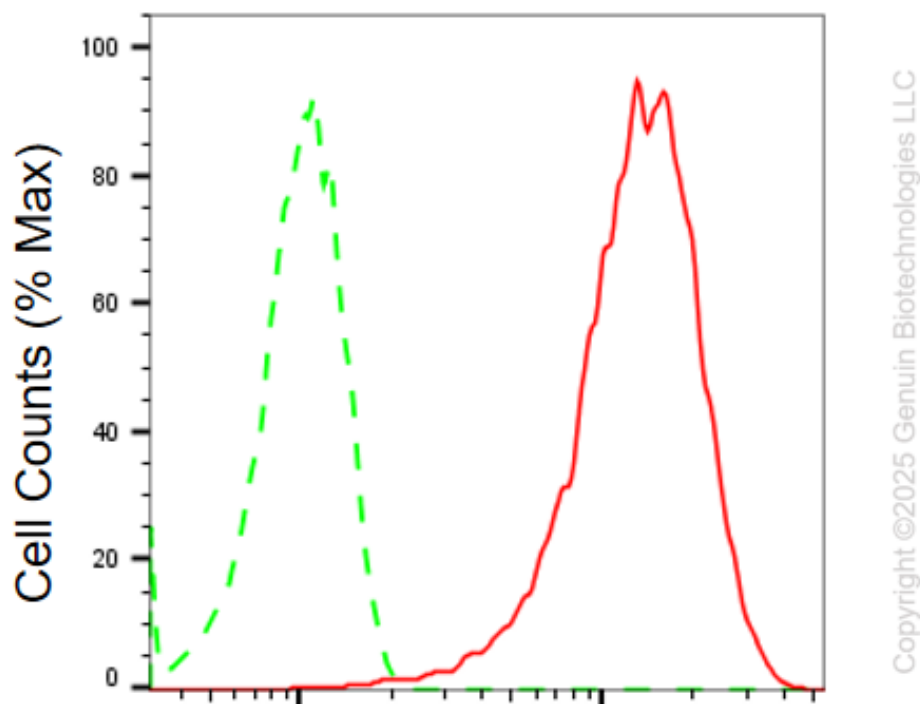
ORDERS

SALES@GENUINBIOTECH.COM
FAX: +1-540-855-7041

WWW.GENUINBIOTECH.COM

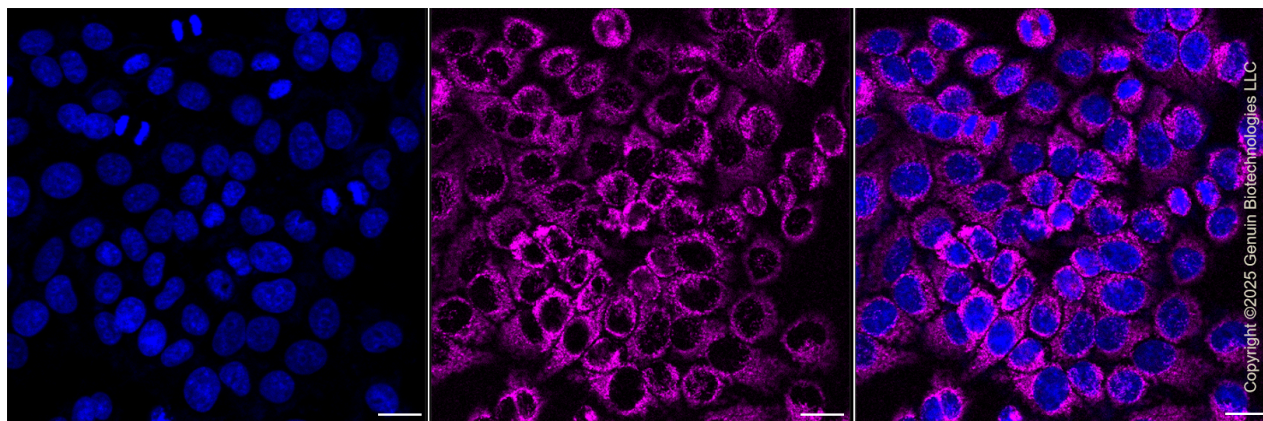
Note: This product is for research use only.

Validation Data



ATP synthase F1 subunit gamma-Alexa Fluor® 647

Flow cytometric analysis of ATP synthase F1 subunit gamma expression in HepG2 cells using anti-ATP synthase F1 subunit gamma antibody (Cat#5399, 1:1,000). Green, isotype control; red, ATP synthase F1 subunit gamma.



Immunocytochemical staining of HepG2 cells with anti-ATP synthase F1 subunit gamma antibody

SUPPORT

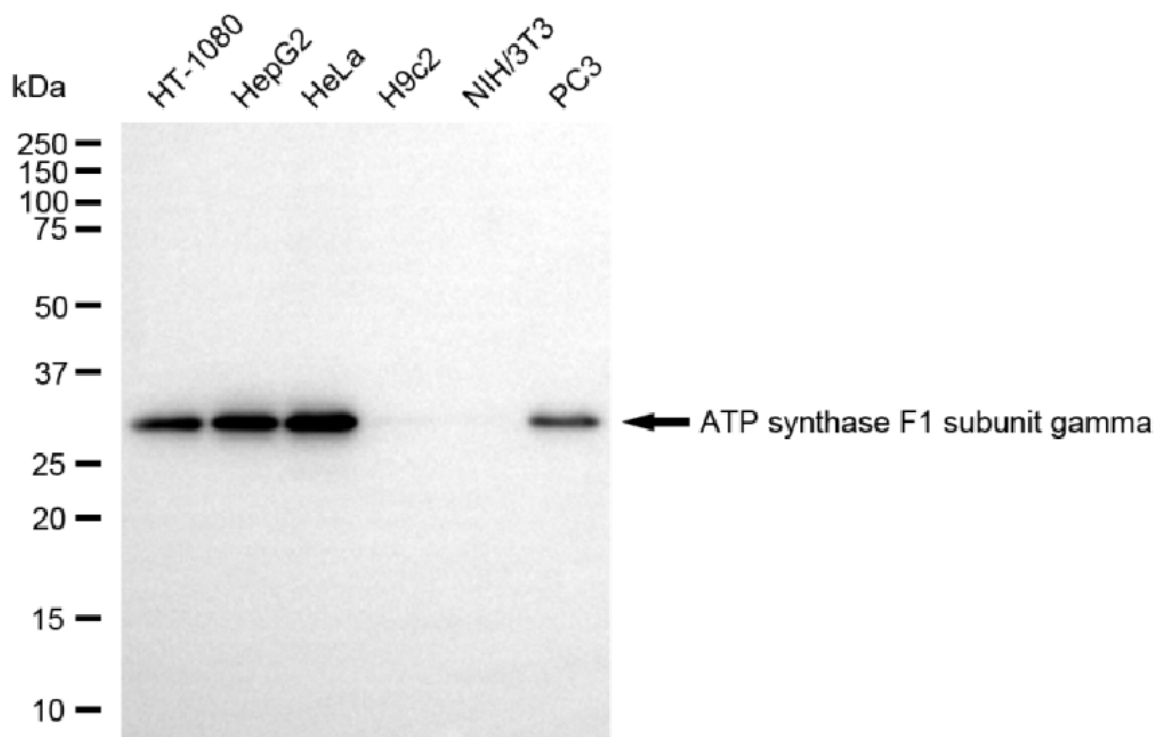
SUPPORT@GENUINBIOTECH.COM
TEL: +1-540-855-7041

ORDERS

SALES@GENUINBIOTECH.COM
FAX: +1-540-855-7041

WWW.GENUINBIOTECH.COM

(Cat#5399, 1:1,000). Nuclei were stained blue with DAPI; ATP synthase F1 subunit gamma was stained magenta with Alexa Fluor® 647. Images were taken using Leica stellaris 5. Protein abundance based on laser Intensity and smart gain: Medium. Scale bar, 20 µm.



Copyright ©2025 Genuin Biotechnologies LLC

Western blotting analysis using anti-ATP synthase F1 subunit gamma antibody (Cat#5399). Total cell lysates (30 µg) from various cell lines were loaded and separated by SDS-PAGE. The blot was incubated with anti-ATP synthase F1 subunit gamma antibody (Cat#5399, 1:2,500) and HRP-conjugated goat anti-mouse secondary antibody (Cat#101, 1:20,000) respectively. Image was developed using NaQ™ ECL Substrate Kit (Cat#716).