

## Catalog #: 5403

### Aliases

CTDSP2; CTD Small Phosphatase 2; SCP2; OS4; Nuclear LIM Interactor-Interacting Factor 2; NLI-Interacting Factor 2; Small CTD Phosphatase 2; PSR2; CTD (Carboxy-Terminal Domain, RNA Polymerase II, Polypeptide A) Small Phosphatase 2; Carboxy-Terminal Domain RNA Polymerase II Polypeptide A Small Phosphatase 2; Conserved Gene Amplified In Osteosarcoma; Small C-Terminal Domain Phosphatase 2; Protein OS-4; EC 3.1.3.16; NIF

### Background

Gene Name: CTDSP2

NCBI Gene Entry: [10106](#)

UniProt Entry: [O14595](#)

### Application Information

Molecular Weight: Predicted, 31 kDa; observed, 31 kDa

Clonality: Mouse monoclonal antibody

Clone ID: 25GB1345

Species Reactivity: Human, mouse, rat

Applications Tested: Western blotting (WB)

### Immunogen

Recombinant protein of human SUMO1

### Isotype

Mouse IgG1

### Storage Buffer

Supplied in PBS (pH 7.4) containing 50% glycerol, and 0.02% sodium azide.

### Storage

Store at -20 °C for one year.

### Recommended Dilutions

Western Blotting (WB): 1:500-1:2,500

**Note:** This product is for research use only.

---

#### SUPPORT

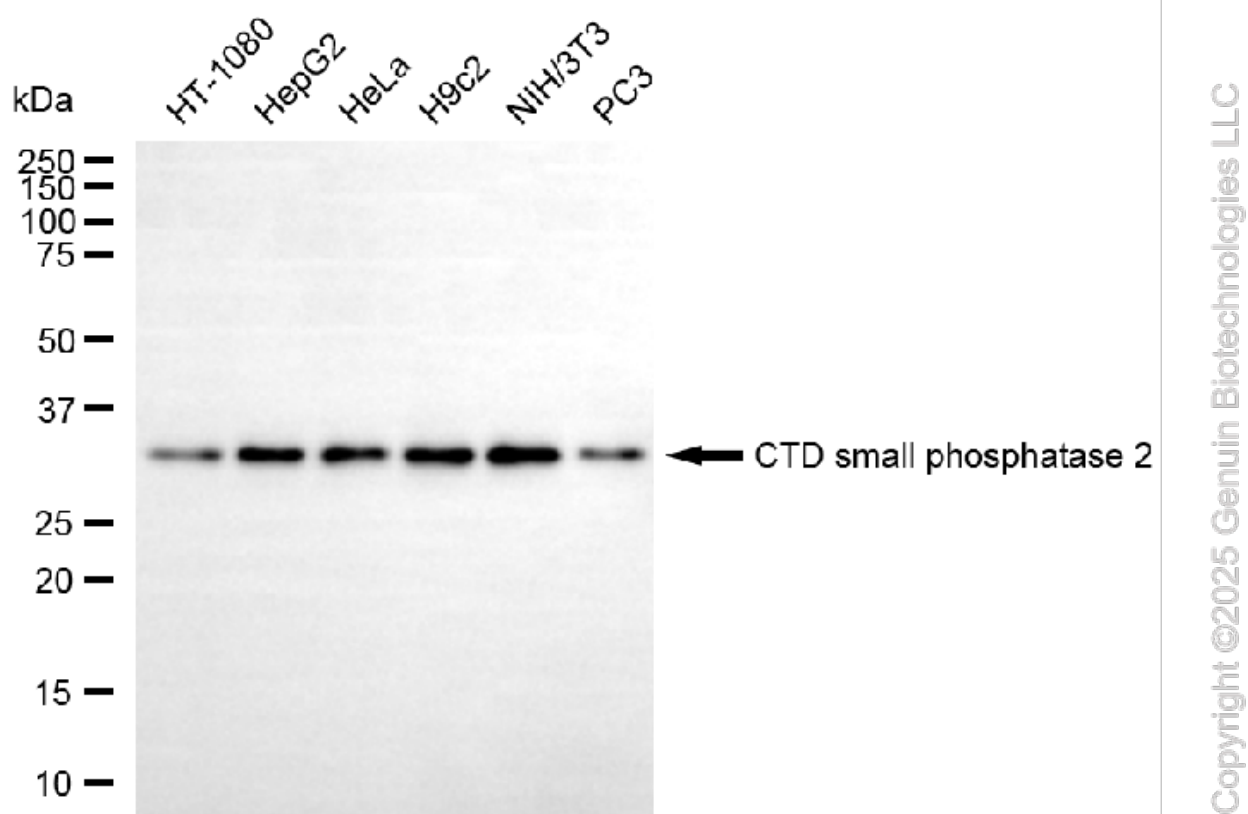
SUPPORT@GENUINBIOTECH.COM  
TEL: +1-540-855-7041

#### ORDERS

SALES@GENUINBIOTECH.COM  
FAX: +1-540-855-7041

[WWW.GENUINBIOTECH.COM](http://WWW.GENUINBIOTECH.COM)

## Validation Data



Western blotting analysis using anti-CTD small phosphatase 2 antibody (Cat#5403). Total cell lysates (30  $\mu$ g) from various cell lines were loaded and separated by SDS-PAGE. The blot was incubated with anti-CTD small phosphatase 2 antibody (Cat#5403, 1:2,500) and HRP-conjugated goat anti-mouse secondary antibody (Cat#101, 1:20,000) respectively. Image was developed using FeQ™ ECL Substrate Kit (Cat#226).

## SUPPORT

SUPPORT@GENUINBIOTECH.COM  
TEL: +1-540-855-7041

## ORDERS

SALES@GENUINBIOTECH.COM  
FAX: +1-540-855-7041

WWW.GENUINBIOTECH.COM