

Catalog #: 5404

Aliases

CRLF3; Cytokine Receptor Like Factor 3; CREME9; CYTOR4; Cytokine Receptor-Like Factor 3; Type I Cytokine Receptor-Like Factor P48; Cytokine Receptor-Related Protein 4; Cytokine Receptor-Like Molecule 9; CREME-9; CRLM9; P48.2; FRWS; P48

Background

Gene Name: CRLF3

NCBI Gene Entry: [51379](#)

UniProt Entry: [Q8IUI8](#)

Application Information

Molecular Weight: Predicted, 50 kDa; observed, 51 kDa

Clonality: Mouse monoclonal antibody

Clone ID: 25GB1350

Species Reactivity: Human

Applications Tested: Western blotting (WB)

Immunogen

Recombinant protein of human CRLF3

Isotype

Mouse IgG1

Storage Buffer

Supplied in PBS (pH 7.4) containing 50% glycerol, and 0.02% sodium azide.

Storage

Store at -20 °C for one year.

Recommended Dilutions

Western Blotting (WB): 1:200-1:1,000

Note: This product is for research use only.

Validation Data

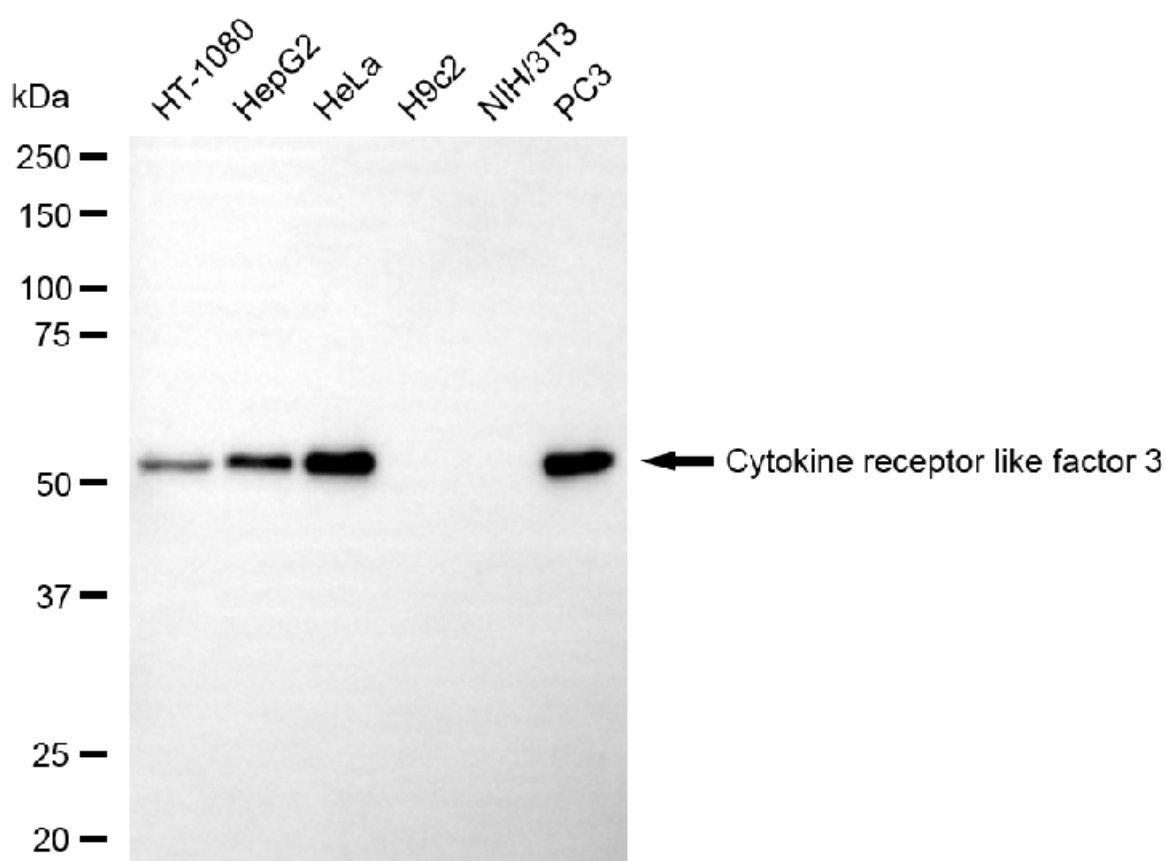
SUPPORT

SUPPORT@GENUINBIOTECH.COM
TEL: +1-540-855-7041

ORDERS

SALES@GENUINBIOTECH.COM
FAX: +1-540-855-7041

WWW.GENUINBIOTECH.COM



Copyright ©2025 Genuin Biotechnologies LLC

Western blotting analysis using anti-cytokine receptor like factor 3 antibody (Cat#5404). Total cell lysates (30 μ g) from various cell lines were loaded and separated by SDS-PAGE. The blot was incubated with anti-cytokine receptor like factor 3 antibody (Cat#5404, 1:1,000) and HRP-conjugated goat anti-mouse secondary antibody (Cat#101, 1:20,000) respectively. Image was developed using FeQ™ ECL Substrate Kit (Cat#226).

SUPPORT

SUPPORT@GENUINBIOTECH.COM
TEL: +1-540-855-7041

ORDERS

SALES@GENUINBIOTECH.COM
FAX: +1-540-855-7041

WWW.GENUINBIOTECH.COM