

Catalog #: 5413

Aliases

DPP8; Dipeptidyl Peptidase 8; DPRP1; DP8; Dipeptidyl Peptidase VIII; Prolyl Dipeptidase DPP8; MSTP141; Dipeptidyl Peptidase IV-Related Protein 1; FLJ14920; FLJ20283; MGC26191; DPP VIII; DPRP-1; Dipeptidyl Peptidase IV-Related Protein-1; Dipeptidyl-Peptidase 8; Dipeptidylpeptidase 8; EC 3.4.14.5; MSTP097; MSTP135; MST097

Background

Gene Name: DPP8

NCBI Gene Entry: [54878](#)

UniProt Entry: [Q6V1X1](#)

Application Information

Molecular Weight: Predicted, 103 kDa; observed, 103 kDa

Clonality: Mouse monoclonal antibody

Clone ID: 25GB1395

Species Reactivity: Human, mouse, rat

Applications Tested: Western blotting (WB)

Immunogen

Recombinant protein of human DPP8

Isotype

Mouse IgG1

Storage Buffer

Supplied in PBS (pH 7.4) containing 50% glycerol, and 0.02% sodium azide.

Storage

Store at -20 °C for one year.

Recommended Dilutions

Western Blotting (WB): 1:400-1:2,000

Note: This product is for research use only.

Validation Data

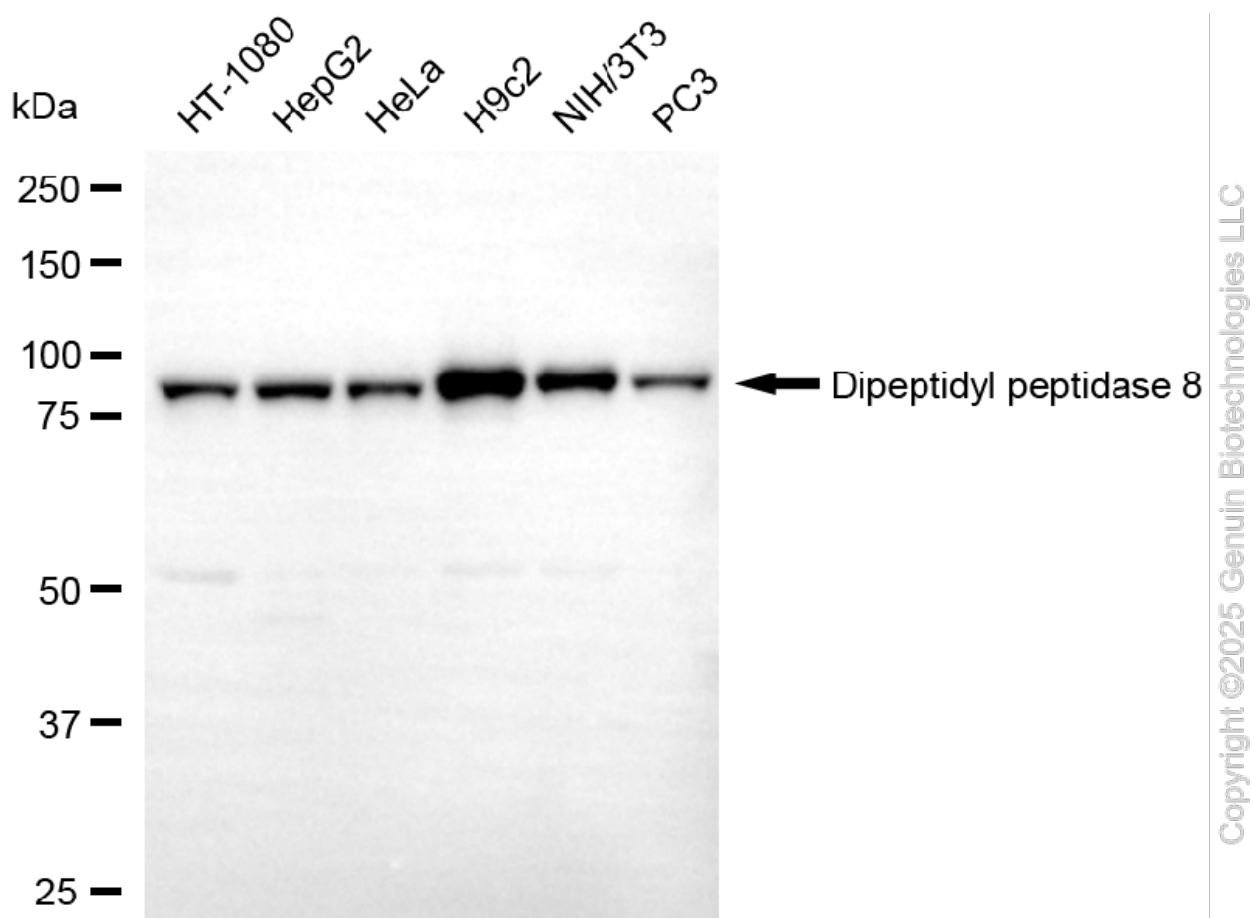
SUPPORT

SUPPORT@GENUINBIOTECH.COM
TEL: +1-540-855-7041

ORDERS

SALES@GENUINBIOTECH.COM
FAX: +1-540-855-7041

WWW.GENUINBIOTECH.COM



Western blotting analysis using anti-dipeptidyl peptidase 8 antibody (Cat#5413). Total cell lysates (30 µg) from various cell lines were loaded and separated by SDS-PAGE. The blot was incubated with anti-dipeptidyl peptidase 8 antibody (Cat#5413, 1:2,000) and HRP-conjugated goat anti-mouse secondary antibody (Cat#101, 1:20,000) respectively. Image was developed using FeQ™ ECL Substrate Kit (Cat#226).

SUPPORT

SUPPORT@GENUINBIOTECH.COM
TEL: +1-540-855-7041

ORDERS

SALES@GENUINBIOTECH.COM
FAX: +1-540-855-7041

WWW.GENUINBIOTECH.COM