

Catalog #: 5417

Aliases

EXOSC1; Exosome Component 1; CSL4; CGI-108; Csl4p; Ski4p; SKI4; P13; Exosome Complex Component CSL4; HCsl4p; Homolog Of Yeast Exosomal Core Protein CSL4; CSL4 Exosomal Core Protein Homolog (Yeast); 3'-5' Exoribonuclease CSL4 Homolog; Exosomal Core Protein CSL4; PCH1F

Background

Gene Name: EXOSC1

NCBI Gene Entry: [51013](#)

UniProt Entry: [Q9Y3B2](#)

Application Information

Molecular Weight: Predicted, 21 kDa; observed, 21 kDa

Clonality: Mouse monoclonal antibody

Clone ID: 25GB1415

Species Reactivity: Human, mouse, rat

Applications Tested: Western blotting (WB)

Immunogen

Recombinant protein of human SUMO1

Isotype

Mouse IgG1

Storage Buffer

Supplied in PBS (pH 7.4) containing 50% glycerol, and 0.02% sodium azide.

Storage

Store at -20 °C for one year.

Recommended Dilutions

Western Blotting (WB): 1:500-1:2,500

Note: This product is for research use only.

Validation Data

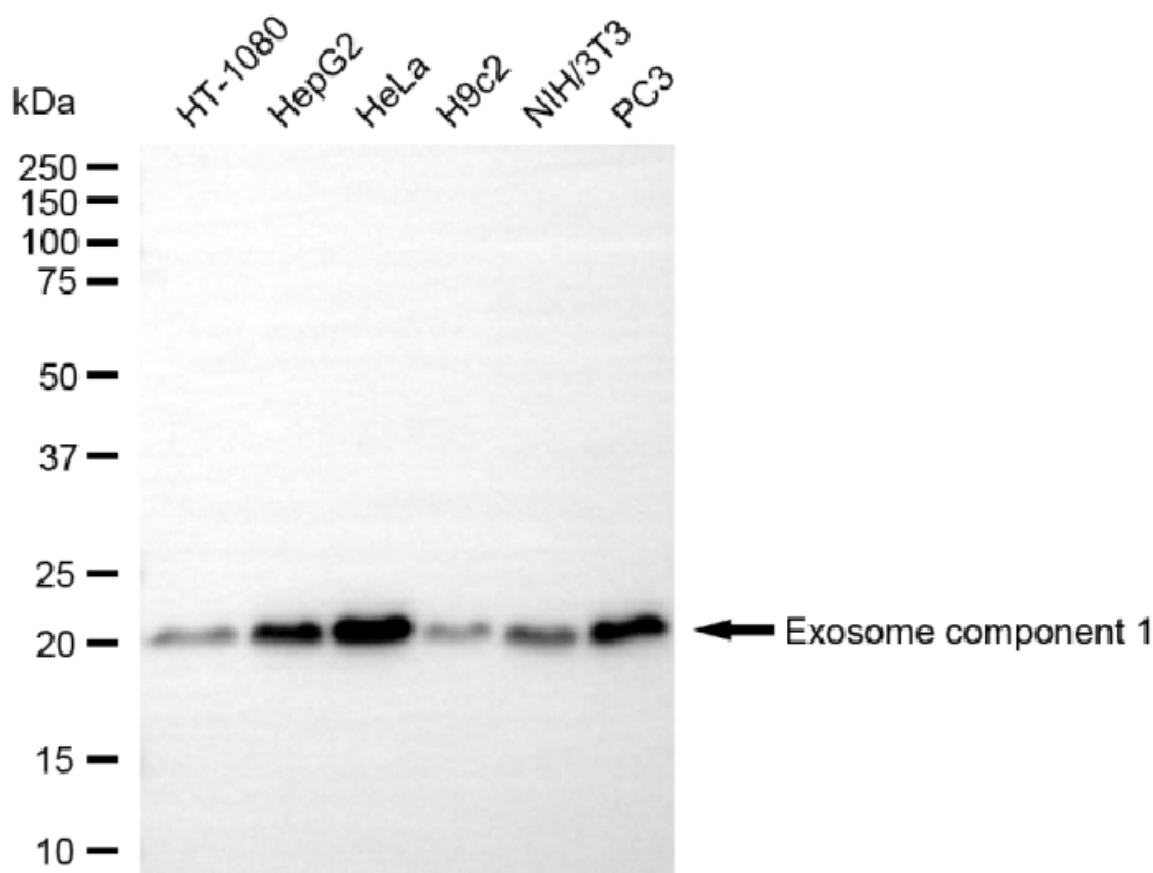
SUPPORT

SUPPORT@GENUINBIOTECH.COM
TEL: +1-540-855-7041

ORDERS

SALES@GENUINBIOTECH.COM
FAX: +1-540-855-7041

WWW.GENUINBIOTECH.COM



Copyright ©2025 Genuin Biotechnologies LLC

Western blotting analysis using anti-exosome component 1 antibody (Cat#5417). Total cell lysates (30 µg) from various cell lines were loaded and separated by SDS-PAGE. The blot was incubated with anti-exosome component 1 antibody (Cat#5417, 1:2,500) and HRP-conjugated goat anti-mouse secondary antibody (Cat#101, 1:20,000) respectively. Image was developed using NaQ™ ECL Substrate Kit (Cat#716).

SUPPORT

SUPPORT@GENUINBIOTECH.COM
TEL: +1-540-855-7041

ORDERS

SALES@GENUINBIOTECH.COM
FAX: +1-540-855-7041

WWW.GENUINBIOTECH.COM