

Catalog #: 5420

Aliases

CDA; Cytidine Deaminase; CDD; Cytidine Aminohydrolase; Cytosine Nucleoside Deaminase; Small Cytidine Deaminase; EC 3.5.4.5

Background

Gene Name: CDA

NCBI Gene Entry: [978](#)

UniProt Entry: [P32320](#)

Application Information

Molecular Weight: Predicted, 16 kDa; observed, 16 kDa

Clonality: Rabbit monoclonal antibody

Clone ID: 25GB1430

Species Reactivity: Human

Applications Tested: Western blotting (WB), flow cytometry (FCM), immunocytochemistry (IC)

Immunogen

Recombinant protein of human CDA

Isotype

Rabbit IgG

Storage Buffer

Supplied in PBS (pH 7.4) containing 50% glycerol, and 0.02% sodium azide.

Storage

Store at -20 °C for one year.

Recommended Dilutions

Western Blotting (WB): 1:1,000-1:5,000

Flow Cytometry (FCM): 1:2,000

Immunocytochemistry (IC): 1:100-1:1,000

Note: This product is for research use only.

Validation Data

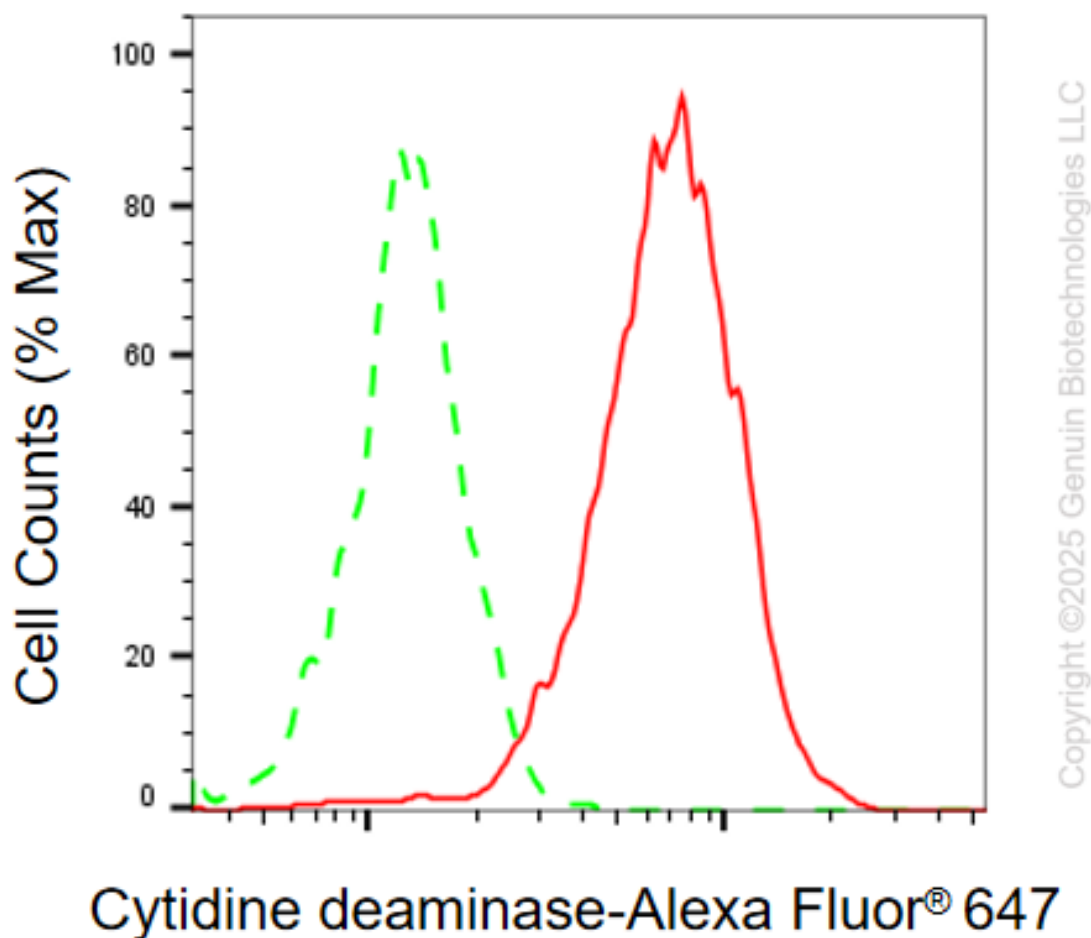
SUPPORT

SUPPORT@GENUINBIOTECH.COM
TEL: +1-540-855-7041

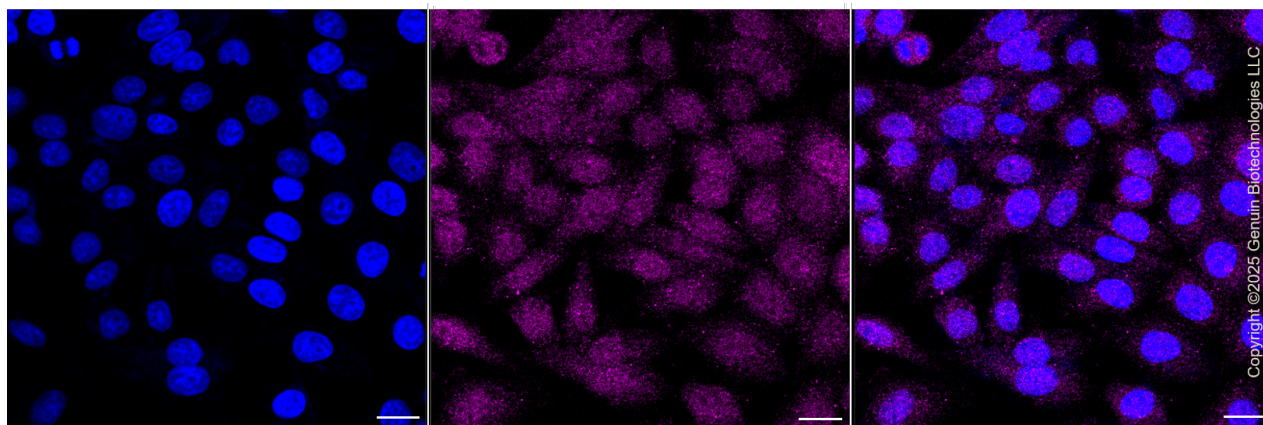
ORDERS

SALES@GENUINBIOTECH.COM
FAX: +1-540-855-7041

WWW.GENUINBIOTECH.COM



Flow cytometric analysis of Cytidine deaminase expression in HepG2 cells using anti-Cytidine deaminase antibody (Cat#5420, 1:2,000). Green, isotype control; red, Cytidine deaminase.

**SUPPORT**

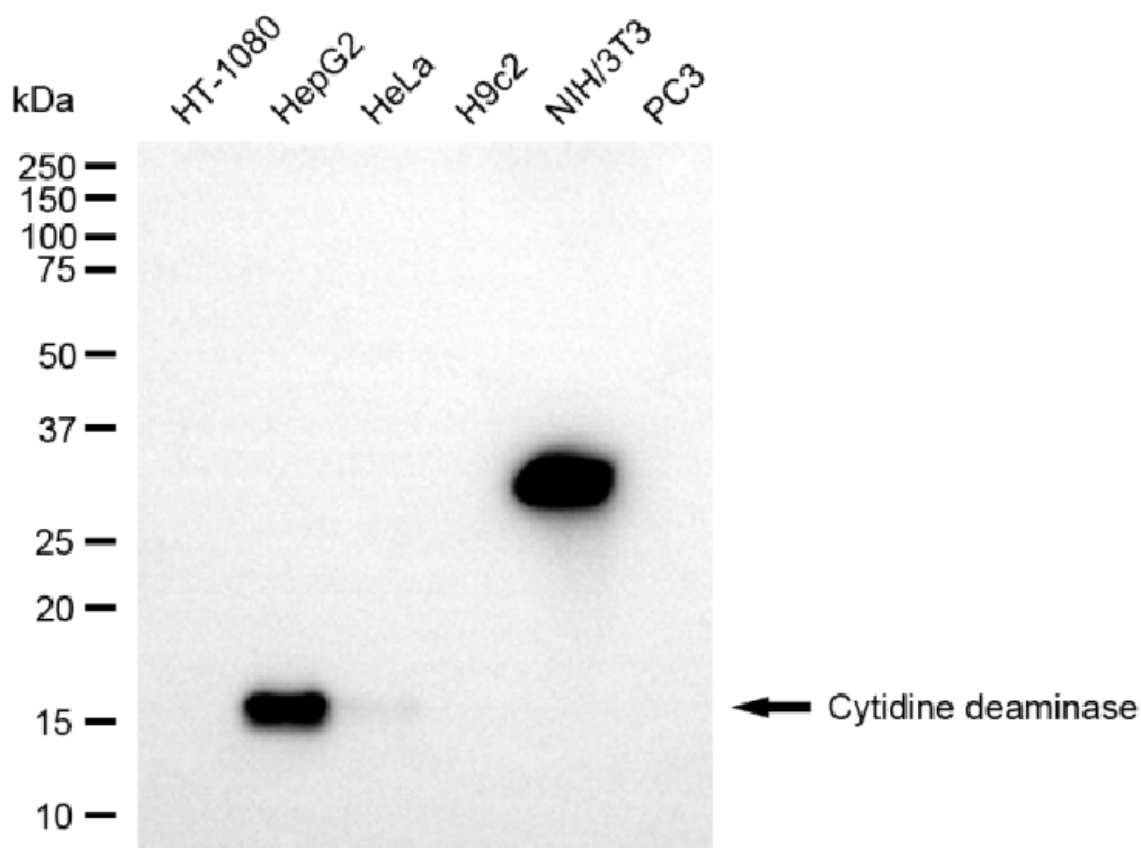
SUPPORT@GENUINBIOTECH.COM
TEL: +1-540-855-7041

ORDERS

SALES@GENUINBIOTECH.COM
FAX: +1-540-855-7041

WWW.GENUINBIOTECH.COM

Immunocytochemical staining of HepG2 cells with anti-Cytidine deaminase antibody (Cat#5420, 1:1,000). Nuclei were stained blue with DAPI; Cytidine deaminase was stained magenta with Alexa Fluor® 647. Images were taken using Leica stellaris 5. Protein abundance based on laser Intensity and smart gain: Medium. Scale bar, 20 μ m.



Copyright ©2025 Genuin Biotechnologies LLC

Western blotting analysis using anti-cytidine deaminase antibody (Cat#5420). Total cell lysates (30 μ g) from various cell lines were loaded and separated by SDS-PAGE. The blot was incubated with anti-cytidine deaminase antibody (Cat#5420, 1:5,000) and HRP-conjugated goat anti-rabbit secondary antibody (Cat#201, 1:20,000) respectively. Image was developed using FeQ™ ECL Substrate Kit (Cat#226).