

Anti-GRIA1 Recombinant Rabbit Monoclonal Antibody



Catalog #: 5432

Aliases

GRIA1; Glutamate Ionotropic Receptor AMPA Type Subunit 1; Glutamate Receptor 1; GluA1; GLURA; GLUR1; Glutamate Receptor, Ionotropic, AMPA 1; AMPA-Selective Glutamate Receptor 1; AMPA Receptor Subunit GluA1; GluR-K1; GluR-1; GluR-A; GLUH1; Glutamate Receptor Ionotropic, AMPA 1; AMPA 1; HBGR1; MRD67; MRT76; GLUA1

Background

Gene Name: GRIA1

NCBI Gene Entry: [2890](#)

UniProt Entry: [P42261](#)

Application Information

Molecular Weight: Predicted, 102 kDa; observed, 130 kDa

Clonality: Rabbit monoclonal antibody

Clone ID: 25GB1525

Species Reactivity: Human

Applications Tested: Western blotting (WB), flow cytometry (FCM), immunocytochemistry (IC)

Immunogen

A synthesized peptide derived from human GRIA1

Isotype

Rabbit IgG

Storage Buffer

Supplied in PBS (pH 7.4) containing 50% glycerol, and 0.02% sodium azide.

Storage

Store at -20 °C for one year.

Recommended Dilutions

Western Blotting (WB): 1:1,000-1:5,000

Flow Cytometry (FCM): 1:2,000

Immunocytochemistry (IC): 1:100-1:1,000

SUPPORT

SUPPORT@GENUINBIOTECH.COM
TEL: +1-540-855-7041

ORDERS

SALES@GENUINBIOTECH.COM
FAX: +1-540-855-7041

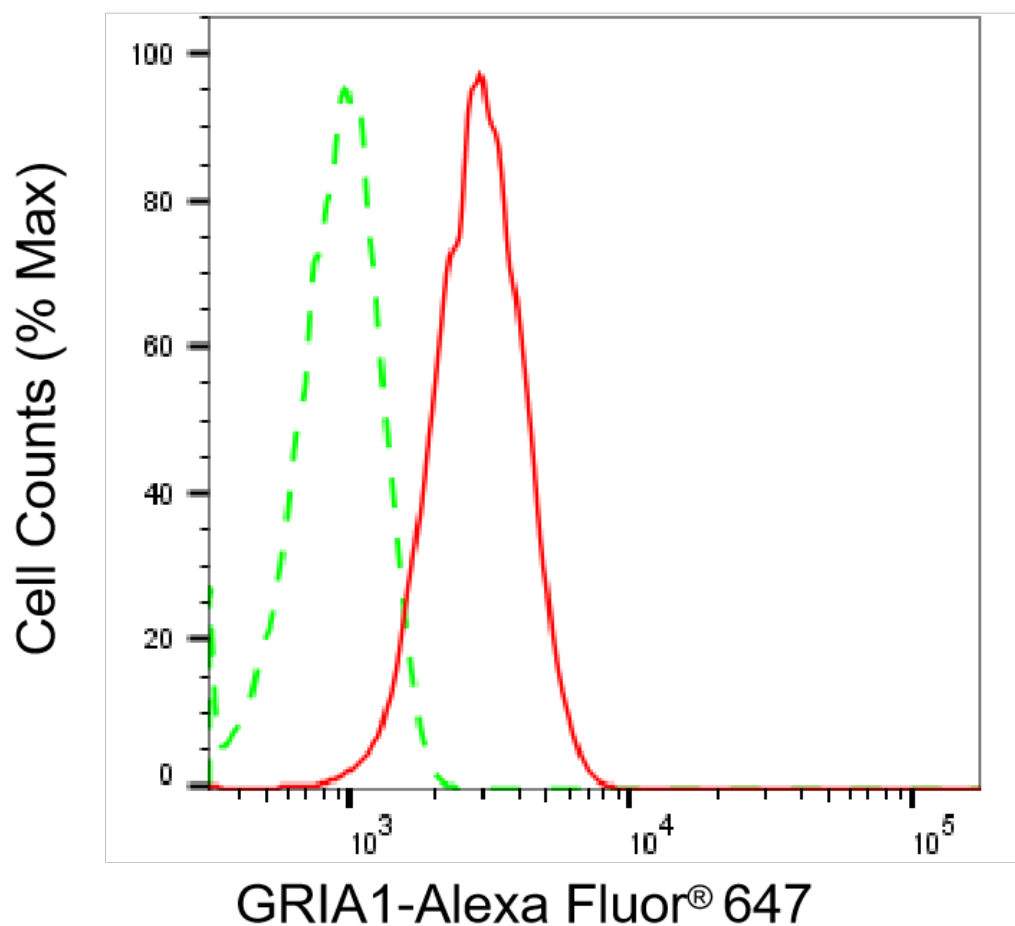
WWW.GENUINBIOTECH.COM

Anti-GRIA1 Recombinant Rabbit Monoclonal Antibody

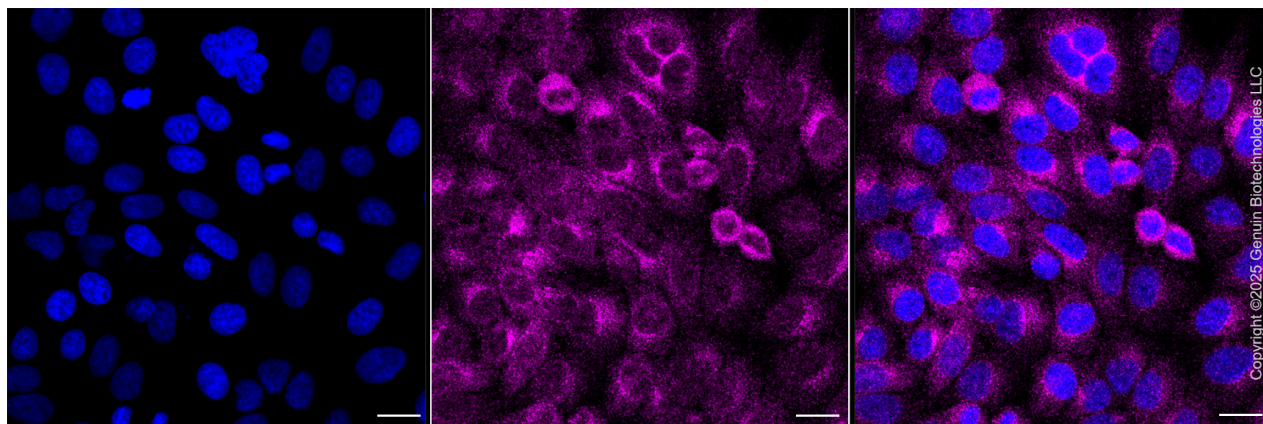
PAGE 2

Note: This product is for research use only.

Validation Data



Flow cytometric analysis of GRIA1 expression in HepG2 cells using anti-GRIA1 antibody (Cat#5432, 1:2,000). Green, isotype control; red, GRIA1.



SUPPORT

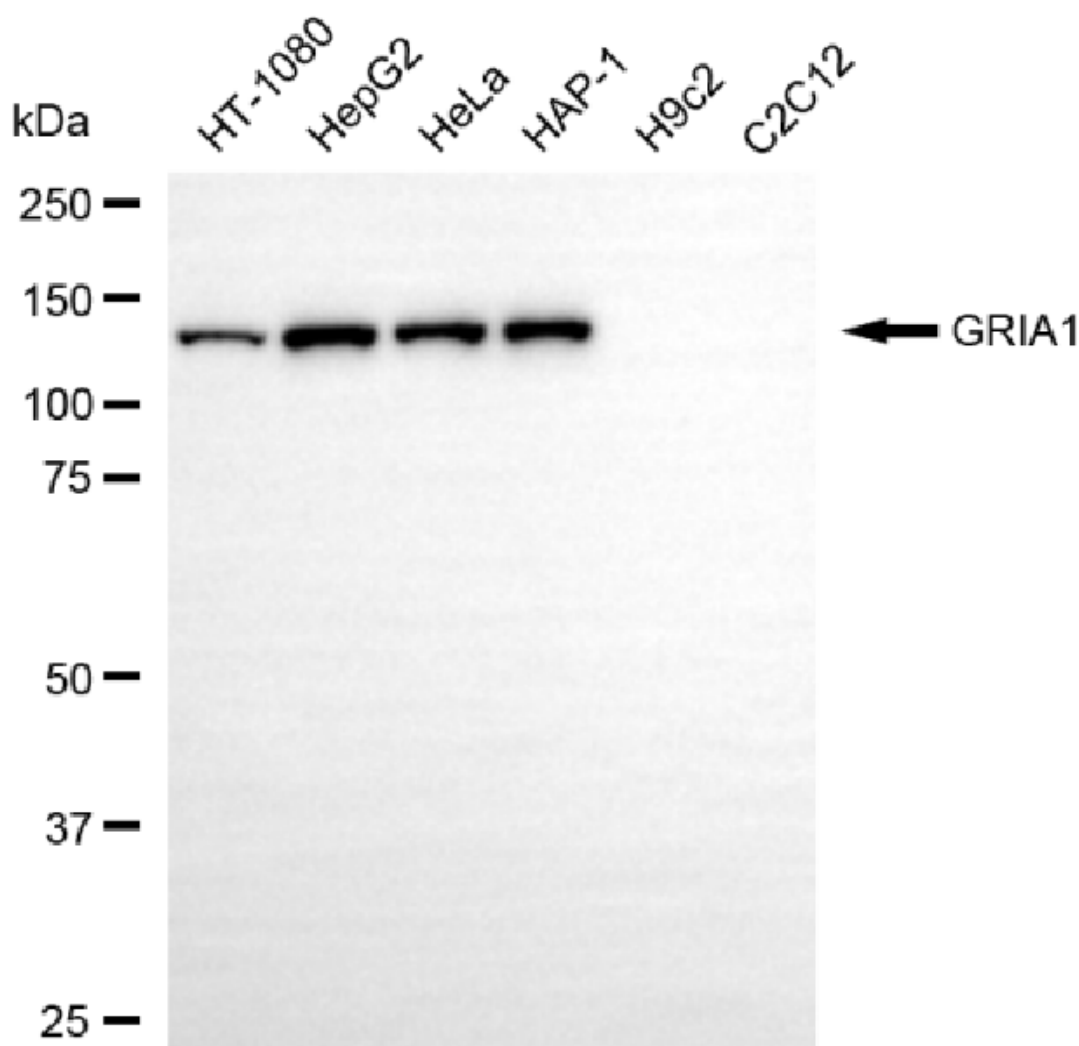
SUPPORT@GENUINBIOTECH.COM
TEL: +1-540-855-7041

ORDERS

SALES@GENUINBIOTECH.COM
FAX: +1-540-855-7041

WWW.GENUINBIOTECH.COM

Immunocytochemical staining of HepG2 cells with anti-GRIA1 antibody (Cat#5432, 1:1,000) . Nuclei were stained blue with DAPI; GRIA1 was stained magenta with Alexa Fluor® 647. Images were taken using Leica stellaris 5. Protein abundance based on laser Intensity and smart gain: Medium. Scale bar, 20 µm.



Copyright ©2025 Genuin Biotechnologies LLC

Western blotting analysis using anti-GRIA1 antibody (Cat#5432). Total cell lysates (30 µg) from various cell lines were loaded and separated by SDS-PAGE. The blot was incubated with anti-GRIA1 antibody (Cat#5432, 1:5,000) and HRP-conjugated goat anti-rabbit secondary antibody (Cat#201, 1:20,000) respectively. Image was developed using NaQ™ ECL Substrate Kit (Cat#716).