

Anti-LSP1 Recombinant Rabbit Monoclonal Antibody



Catalog #: 5436

Aliases

LSP1; Lymphocyte Specific Protein 1; WP34; Lymphocyte-Specific Antigen WP34; Lymphocyte-Specific Protein 1; 52 KDa Phosphoprotein; Pp52; F-Actin Binding And Cytoskeleton Associated Protein; Leufactin (Leukocyte F-Actin Binding Protein); 47 KDa Actin Binding Protein; Leukocyte-Specific Protein 1; 47 KDa Actin-Binding Protein

Background

Gene Name: LSP1

NCBI Gene Entry: [4046](#)

UniProt Entry: [P33241](#)

Application Information

Molecular Weight: Predicted, 37 kDa; observed, 52 kDa

Clonality: Rabbit monoclonal antibody

Clone ID: 25GB1545

Species Reactivity: Human

Applications Tested: Western blotting (WB)

Immunogen

A synthesized peptide derived from human LSP1

Isotype

Rabbit IgG

Storage Buffer

Supplied in PBS (pH 7.4) containing 50% glycerol, and 0.02% sodium azide.

Storage

Store at -20 °C for one year.

Recommended Dilutions

Western Blotting (WB): 1:1,000-1:5,000

Note: This product is for research use only.

Validation Data

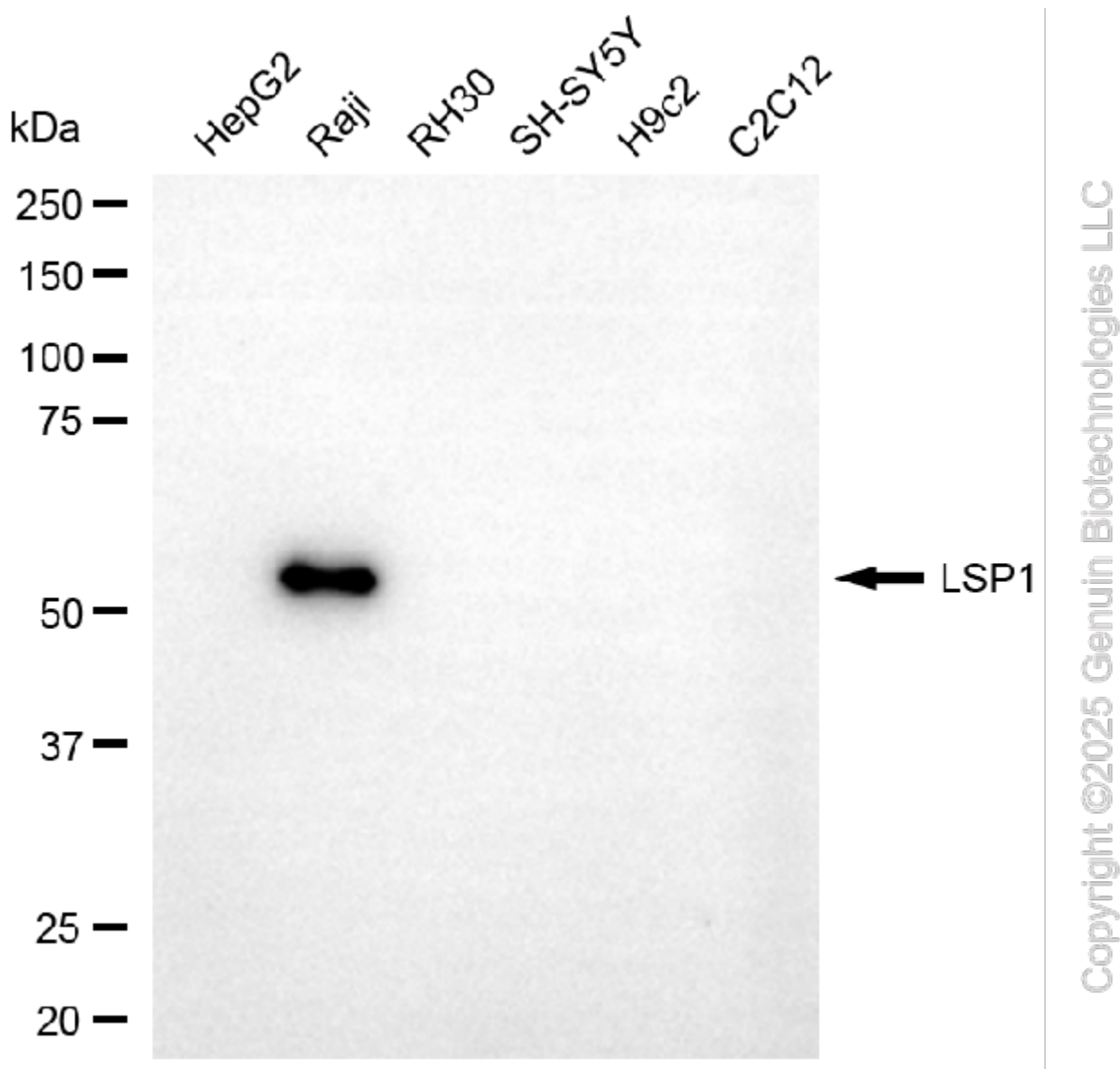
SUPPORT

SUPPORT@GENUINBIOTECH.COM
TEL: +1-540-855-7041

ORDERS

SALES@GENUINBIOTECH.COM
FAX: +1-540-855-7041

WWW.GENUINBIOTECH.COM



Western blotting analysis using anti-LSP1 antibody (Cat#5436). Total cell lysates (30 µg) from various cell lines were loaded and separated by SDS-PAGE. The blot was incubated with anti-LSP1 antibody (Cat#5436, 1:5,000) and HRP-conjugated goat anti-rabbit secondary antibody (Cat#201, 1:20,000) respectively. Image was developed using FeQ™ ECL Substrate Kit (Cat#226).