

Anti-PTPRC Recombinant Rabbit Monoclonal Antibody



Catalog #: 5439

Aliases

PTPRC; Protein Tyrosine Phosphatase Receptor Type C; T200; GP180; CD45R; B220; CD45; LCA; LY5; Receptor-Type Tyrosine-Protein Phosphatase C; Glycoprotein 180; CD45 Antigen; L-CA; Protein Tyrosine Phosphatase, Receptor Type, C Polypeptide; T200 Leukocyte Common Antigen; Leukocyte-Common Antigen; Leukocyte Common Antigen; T200 Glycoprotein; EC 3.1.3.48; IMD105

Background

Gene Name: PTPRC

NCBI Gene Entry: [5788](#)

UniProt Entry: [P08575](#)

Application Information

Molecular Weight: Predicted, 147 kDa; observed, 150-200 kDa

Clonality: Rabbit monoclonal antibody

Clone ID: 25GB1560

Species Reactivity: Human, mouse

Applications Tested: Western blotting (WB), flow cytometry (FCM)

Immunogen

A synthesized peptide derived from human PTPRC

Isotype

Rabbit IgG

Storage Buffer

Supplied in PBS (pH 7.4) containing 50% glycerol, and 0.02% sodium azide.

Storage

Store at -20 °C for one year.

Recommended Dilutions

Western Blotting (WB): 1:1,000-1:5,000

Flow Cytometry (FCM): 1:2,000

SUPPORT

SUPPORT@GENUINBIOTECH.COM
TEL: +1-540-855-7041

ORDERS

SALES@GENUINBIOTECH.COM
FAX: +1-540-855-7041

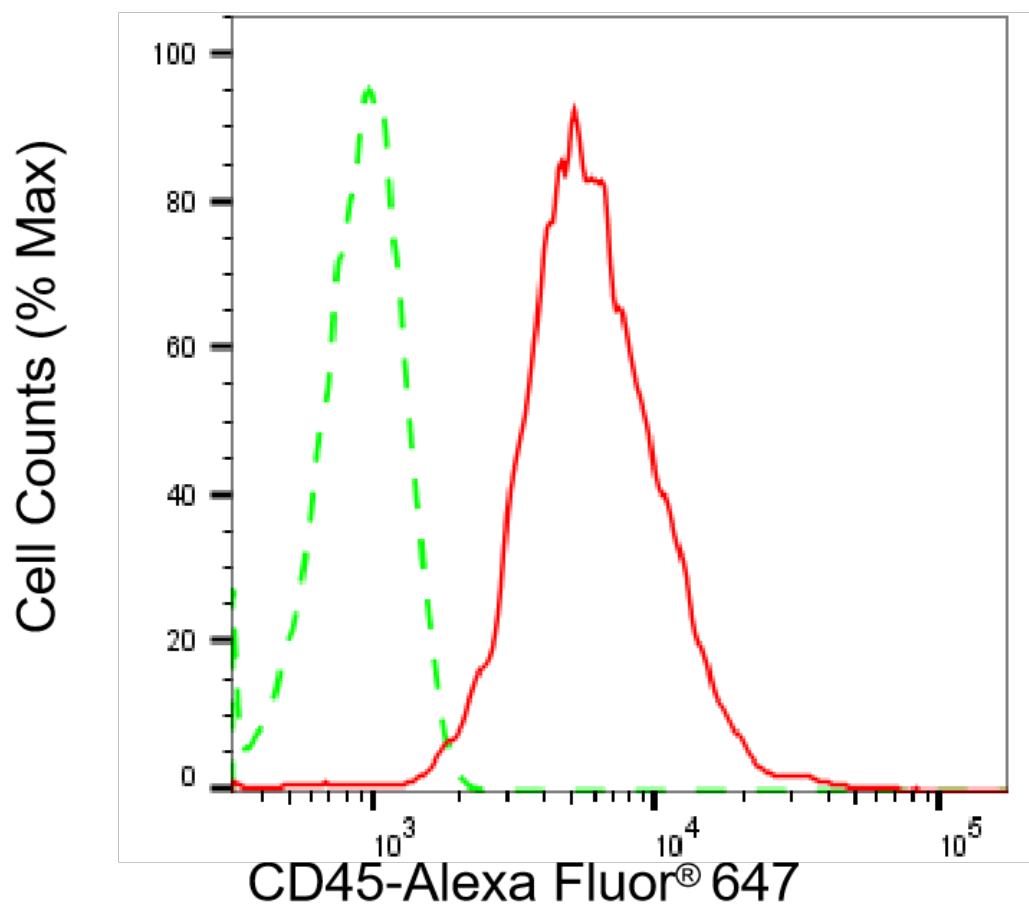
WWW.GENUINBIOTECH.COM

Anti-PTPRC Recombinant Rabbit Monoclonal Antibody

PAGE 2

Note: This product is for research use only.

Validation Data



Copyright ©2025 Genuin Biotechnologies LLC

Flow cytometric analysis of CD45 expression in HepG2 cells using anti-CD45 antibody (Cat#5439, 1:2,000). Green, isotype control; red, CD45.

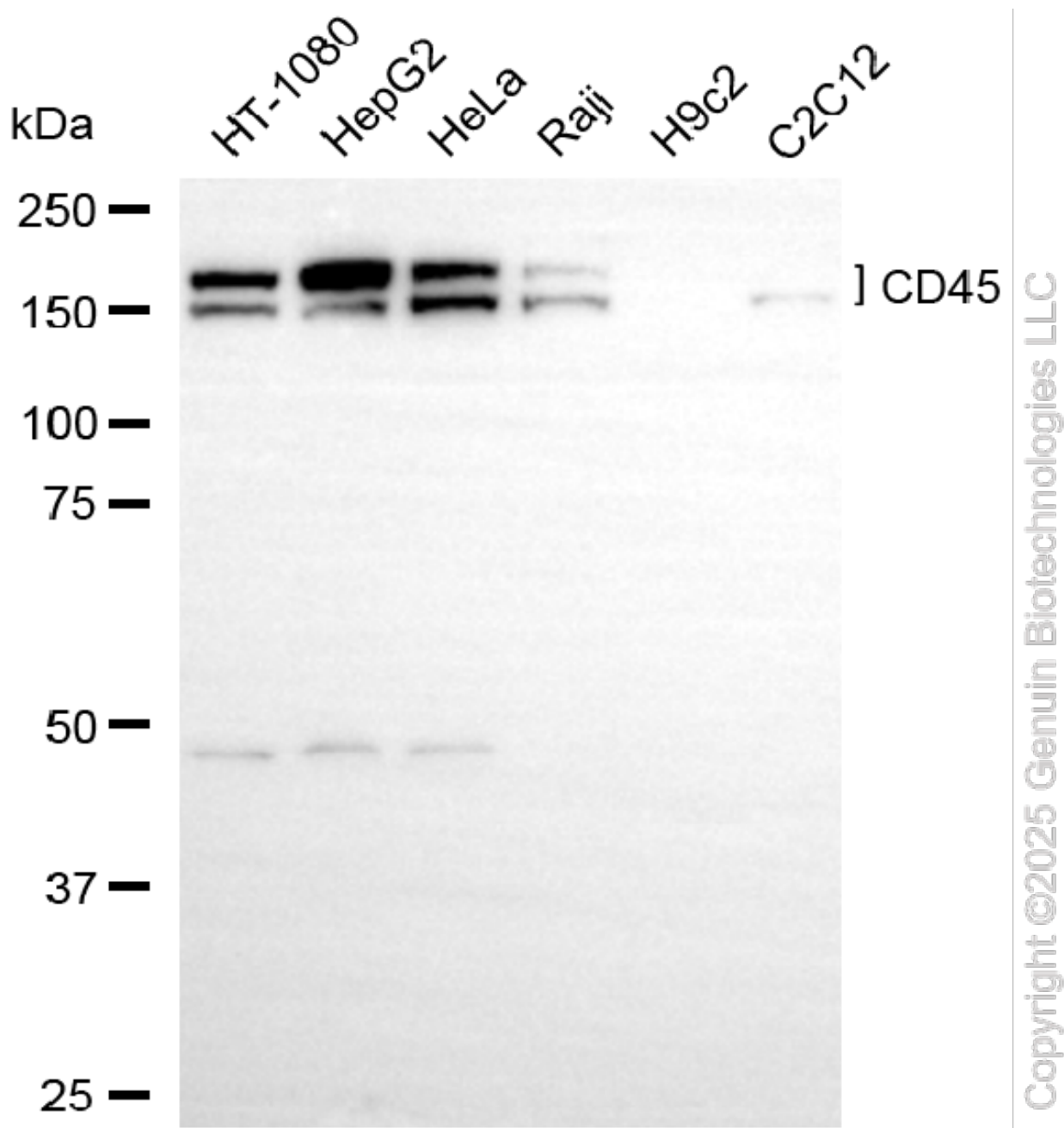
SUPPORT

SUPPORT@GENUINBIOTECH.COM
TEL: +1-540-855-7041

ORDERS

SALES@GENUINBIOTECH.COM
FAX: +1-540-855-7041

WWW.GENUINBIOTECH.COM



Western blotting analysis using anti-CD45 antibody (Cat#5439). Total cell lysates (30 µg) from various cell lines were loaded and separated by SDS-PAGE. The blot was incubated with anti-CD45 antibody (Cat#5439, 1:5,000) and HRP-conjugated goat anti-rabbit secondary antibody (Cat#201, 1:20,000) respectively. Image was developed using NaQ™ ECL Substrate Kit (Cat#716).