

Anti-CEACAM1 Recombinant Rabbit Monoclonal Antibody



Catalog #: 5440

Aliases

CEACAM1; CEA Cell Adhesion Molecule 1; BGP1; BGP; Carcinoembryonic Antigen-Related Cell Adhesion Molecule 1 (Biliary Glycoprotein); Carcinoembryonic Antigen Related Cell Adhesion Molecule 1; Carcinoembryonic Antigen-Related Cell Adhesion Molecule 1; Cell Adhesion Molecule CEACAM1; CD66a Antigen; CD66a; Biliary Glycoprotein 1; Antigen CD66; BGP-1; BGPI

Background

Gene Name: CEACAM1

NCBI Gene Entry: [634](#)

UniProt Entry: [P13688](#)

Application Information

Molecular Weight: Predicted, 57 kDa; observed, 100-200 kDa

Clonality: Rabbit monoclonal antibody

Clone ID: 25GB1565

Species Reactivity: Human

Applications Tested: Western blotting (WB), flow cytometry (FCM)

Immunogen

A synthesized peptide derived from human CEACAM1

Isotype

Rabbit IgG

Storage Buffer

Supplied in PBS (pH 7.4) containing 50% glycerol, and 0.02% sodium azide.

Storage

Store at -20 °C for one year.

Recommended Dilutions

Western Blotting (WB): 1:1,000-1:5,000

Flow Cytometry (FCM): 1:2,000

SUPPORT

SUPPORT@GENUINBIOTECH.COM
TEL: +1-540-855-7041

ORDERS

SALES@GENUINBIOTECH.COM
FAX: +1-540-855-7041

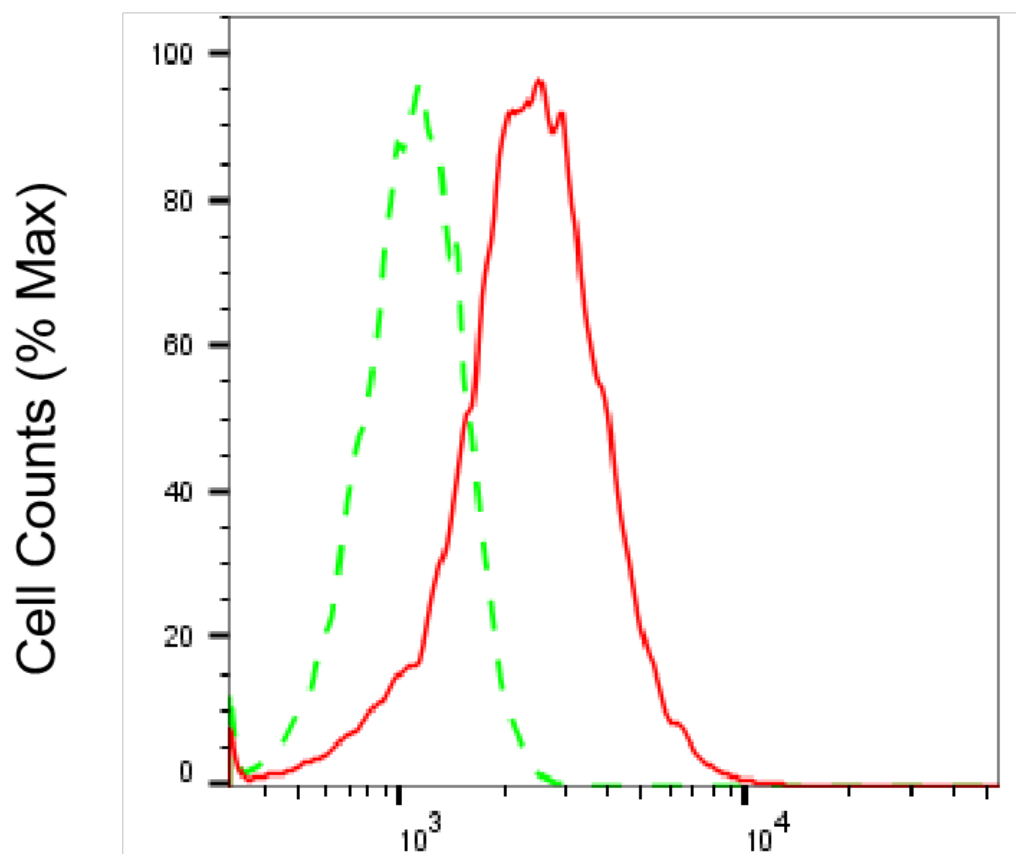
WWW.GENUINBIOTECH.COM

Anti-CEACAM1 Recombinant Rabbit Monoclonal Antibody

PAGE 2

Note: This product is for research use only.

Validation Data



Copyright ©2025 Genuin Biotechnologies LLC

CEACAM1-Alexa Fluor® 647

Flow cytometric analysis of CEACAM1 expression in A549 cells using anti-CEACAM1 antibody (Cat#5440, 1:2,000). Green, isotype control; red, CEACAM1.

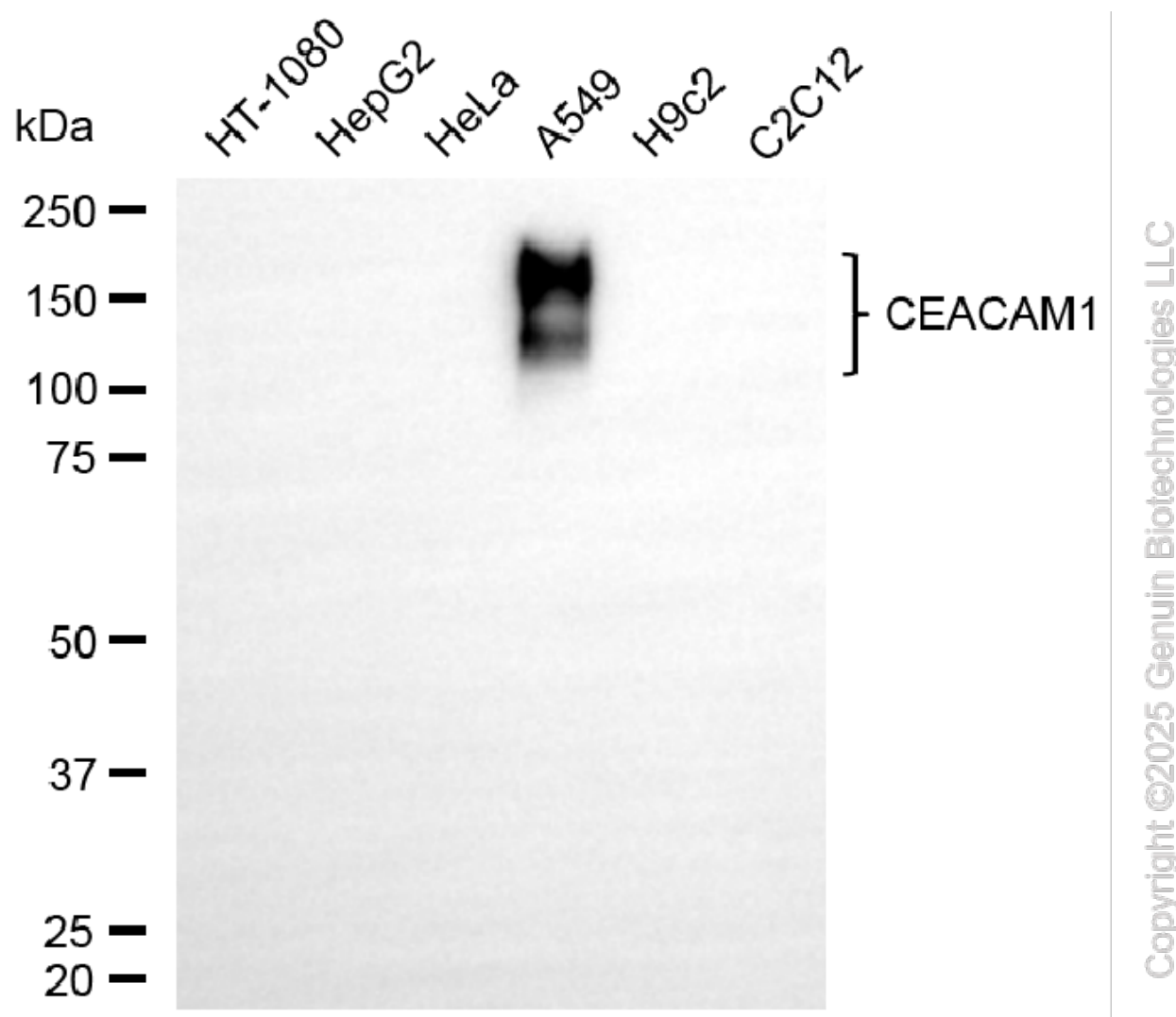
SUPPORT

SUPPORT@GENUINBIOTECH.COM
TEL: +1-540-855-7041

ORDERS

SALES@GENUINBIOTECH.COM
FAX: +1-540-855-7041

WWW.GENUINBIOTECH.COM



Western blotting analysis using anti-CEACAM1 antibody (Cat#5440). Total cell lysates (30 µg) from various cell lines were loaded and separated by SDS-PAGE. The blot was incubated with anti-CEACAM1 antibody (Cat#5440, 1:5,000) and HRP-conjugated goat anti-rabbit secondary antibody (Cat#201, 1:20,000) respectively. Image was developed using NaQ™ ECL Substrate Kit (Cat#716).