

# Anti-BRCC3 Recombinant Rabbit Monoclonal Antibody



**Catalog #: 5443**

## Aliases

BRCC3; BRCA1/BRCA2-Containing Complex Subunit 3; BRCC36; C6.1A; CXorf53; BRCA1/BRCA2-Containing Complex Subunit 36; Lys-63-Specific Deubiquitinase BRCC36; BRCA1-A Complex Subunit BRCC36; BRISC Complex Subunit BRCC36; BRCA1/BRCA2-Containing Complex, Subunit 3; Chromosome X Open Reading Frame 53; Lys-63-Specific Deubiquitinase; EC 3.4.19.-; EC 3.1.2.15

## Background

Gene Name: BRCC3

NCBI Gene Entry: [79184](#)

UniProt Entry: [P46736](#)

## Application Information

Molecular Weight: Predicted, 36 kDa; observed, 32 kDa

Clonality: Rabbit monoclonal antibody

Clone ID: 25GB1580

Species Reactivity: Human, mouse, rat

Applications Tested: Western blotting (WB), flow cytometry (FCM), immunocytochemistry (IC)

## Immunogen

A synthesized peptide derived from human BRCC3

## Isotype

Rabbit IgG

## Storage Buffer

Supplied in PBS (pH 7.4) containing 50% glycerol, and 0.02% sodium azide.

## Storage

Store at -20 °C for one year.

## Recommended Dilutions

Western Blotting (WB): 1:1,000-1:5,000

Flow Cytometry (FCM): 1:2,000

Immunocytochemistry (IC): 1:100-1:1,000

---

### SUPPORT

SUPPORT@GENUINBIOTECH.COM  
TEL: +1-540-855-7041

### ORDERS

SALES@GENUINBIOTECH.COM  
FAX: +1-540-855-7041

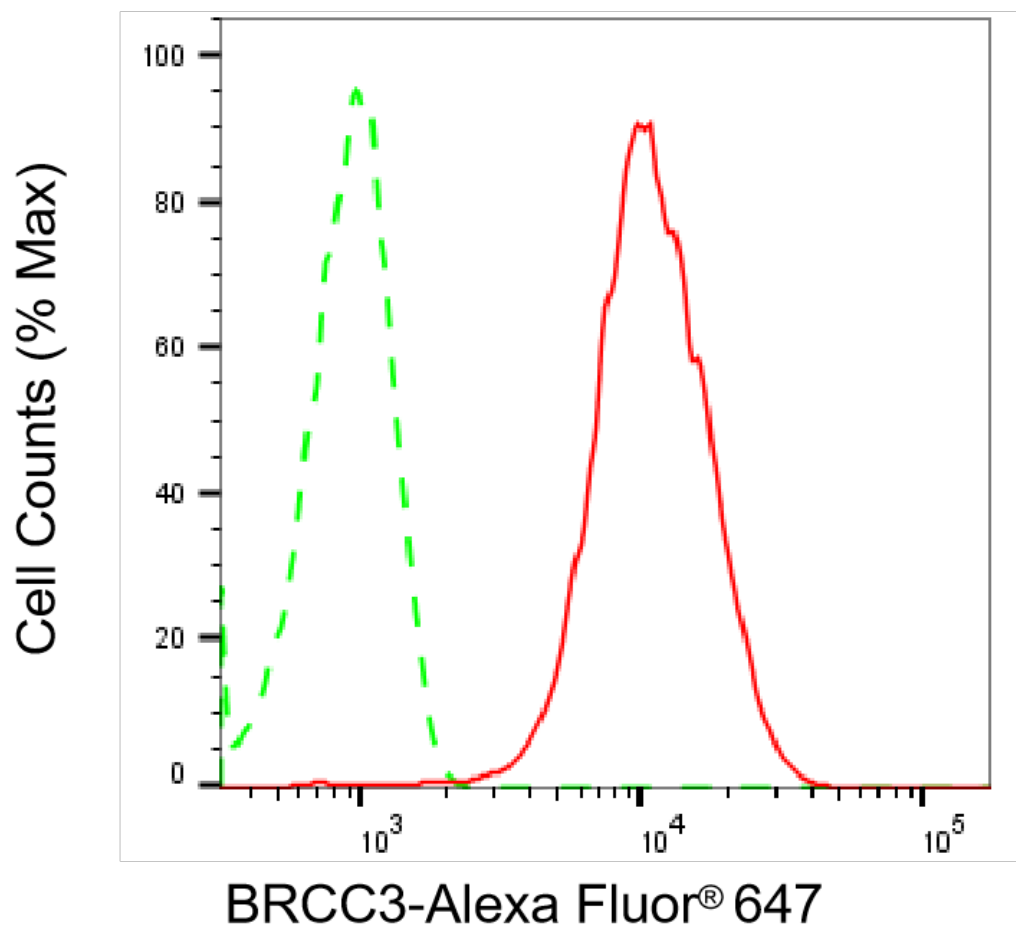
[WWW.GENUINBIOTECH.COM](http://WWW.GENUINBIOTECH.COM)

# Anti-BRCC3 Recombinant Rabbit Monoclonal Antibody

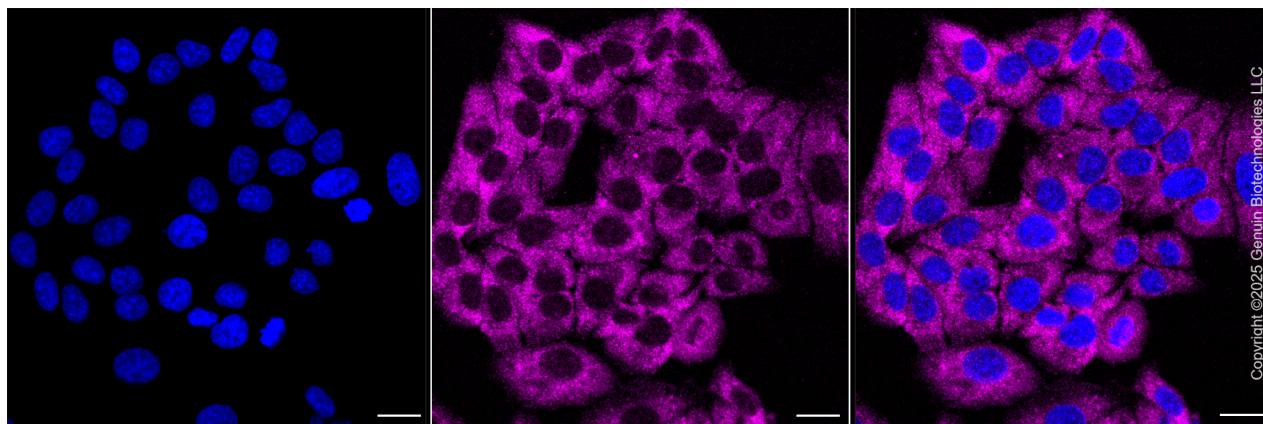
PAGE 2

**Note:** This product is for research use only.

## Validation Data



Flow cytometric analysis of BRCC3 expression in HepG2 cells using anti-BRCC3 antibody (Cat#5443, 1:2,000). Green, isotype control; red, BRCC3.



### SUPPORT

SUPPORT@GENUINBIOTECH.COM  
TEL: +1-540-855-7041

### ORDERS

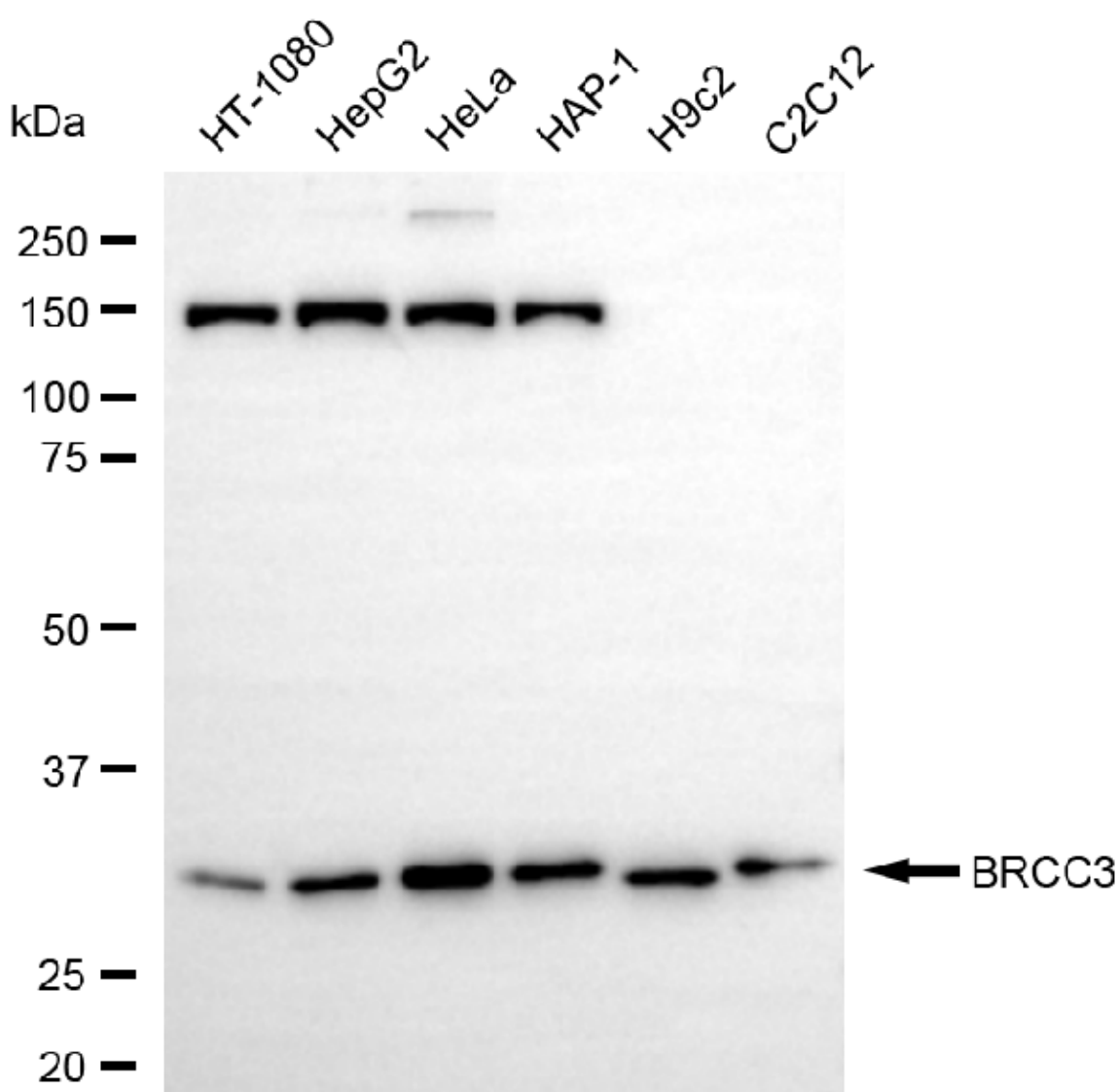
SALES@GENUINBIOTECH.COM  
FAX: +1-540-855-7041

WWW.GENUINBIOTECH.COM

## Anti-BRCC3 Recombinant Rabbit Monoclonal Antibody

PAGE 3

Immunocytochemical staining of HepG2 cells with anti-BRCC3 antibody (Cat#5443, 1:1,000) . Nuclei were stained blue with DAPI; BRCC3 was stained magenta with Alexa Fluor® 647. Images were taken using Leica stellaris 5. Protein abundance based on laser Intensity and smart gain: Medium. Scale bar, 20 µm.



Western blotting analysis using anti-BRCC3 antibody (Cat#5443). Total cell lysates (30 µg) from various cell lines were loaded and separated by SDS-PAGE. The blot was incubated with anti-BRCC3 antibody (Cat#5443, 1:5,000) and HRP-conjugated goat anti-rabbit secondary antibody (Cat#201, 1:20,000) respectively. Image was developed using NaQ™ ECL Substrate Kit (Cat#716).

### SUPPORT

SUPPORT@GENUINBIOTECH.COM  
TEL: +1-540-855-7041

### ORDERS

SALES@GENUINBIOTECH.COM  
FAX: +1-540-855-7041

WWW.GENUINBIOTECH.COM