

Anti-CD3G Recombinant Rabbit Monoclonal Antibody



Catalog #: 5444

Aliases

CD3G; CD3 Gamma Subunit Of T-Cell Receptor Complex; T-Cell Surface Glycoprotein CD3 Gamma Chain; CD3-GAMMA; CD3GAMMA; CD3g Antigen, Gamma Polypeptide (TiT3 Complex); CD3g Molecule, Gamma (CD3-TCR Complex); T-Cell Receptor T3 Gamma Chain; T3G; T-Cell Antigen Receptor Complex, Gamma Subunit Of T3; CD3g Molecule, Epsilon (CD3-TCR Complex); CD3g Molecule; CD3g Antigen; IMD17

Background

Gene Name: CD3G

NCBI Gene Entry: [917](#)

UniProt Entry: [P09693](#)

Application Information

Molecular Weight: Predicted, 20 kDa; observed, 18-28 kDa

Clonality: Rabbit monoclonal antibody

Clone ID: 25GB1585

Species Reactivity: Human

Applications Tested: Western blotting (WB), flow cytometry (FCM)

Immunogen

A synthesized peptide derived from human CD3G

Isotype

Rabbit IgG

Storage Buffer

Supplied in PBS (pH 7.4) containing 50% glycerol, and 0.02% sodium azide.

Storage

Store at -20 °C for one year.

Recommended Dilutions

Western Blotting (WB): 1:1,000-1:5,000

Flow Cytometry (FCM): 1:2,000

SUPPORT

SUPPORT@GENUINBIOTECH.COM
TEL: +1-540-855-7041

ORDERS

SALES@GENUINBIOTECH.COM
FAX: +1-540-855-7041

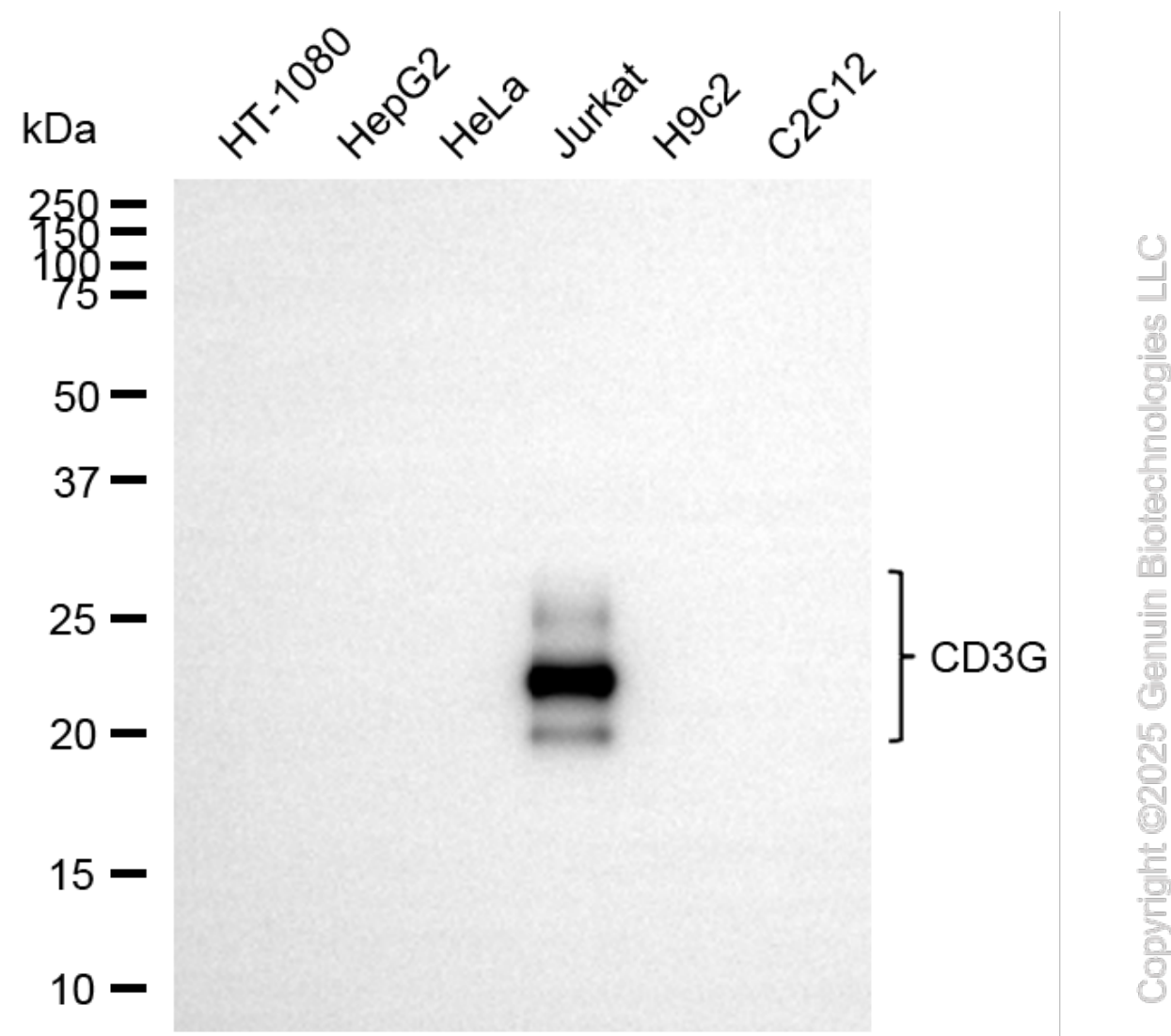
WWW.GENUINBIOTECH.COM

Anti-CD3G Recombinant Rabbit Monoclonal Antibody

PAGE 2

Note: This product is for research use only.

Validation Data



Western blotting analysis using anti-CD3G antibody (Cat#5444). Total cell lysates (30 µg) from various cell lines were loaded and separated by SDS-PAGE. The blot was incubated with anti-CD3G antibody (Cat#5444, 1:5,000) and HRP-conjugated goat anti-rabbit secondary antibody (Cat#201, 1:20,000) respectively. Image was developed using NaQ™ ECL Substrate Kit (Cat#716).

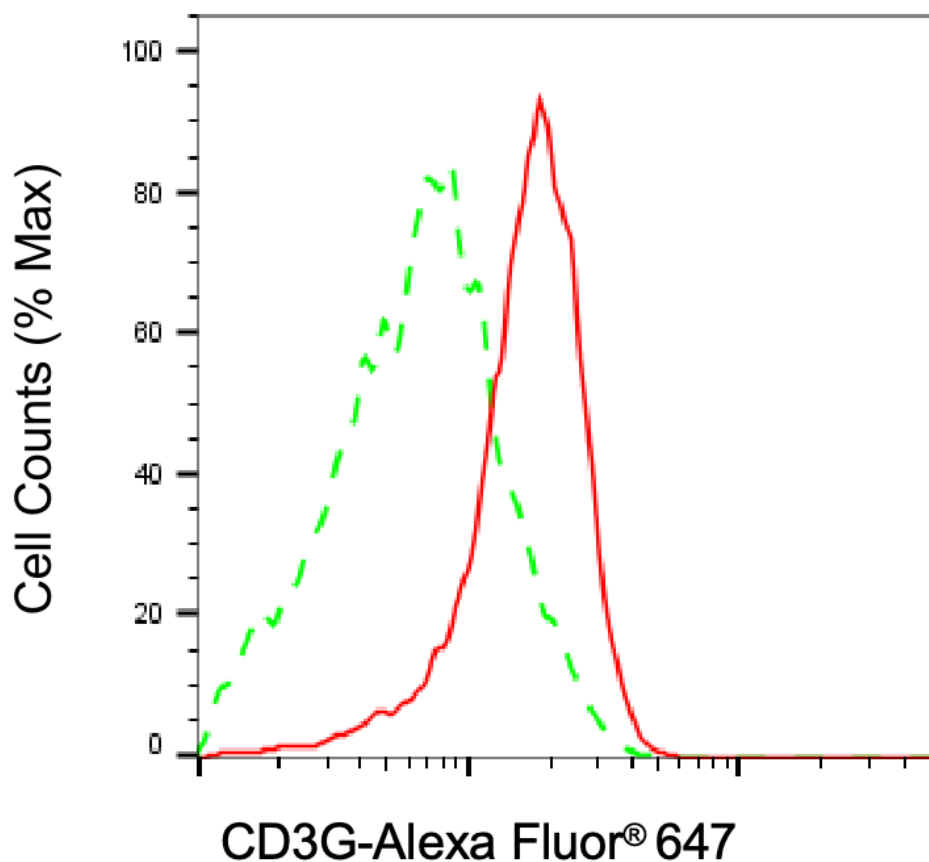
SUPPORT

SUPPORT@GENUINBIOTECH.COM
TEL: +1-540-855-7041

ORDERS

SALES@GENUINBIOTECH.COM
FAX: +1-540-855-7041

WWW.GENUINBIOTECH.COM



Copyright ©2025 Genuin Biotechnologies LLC

Flow cytometric analysis of CD3G expression in Jurkat cells using anti-CD3G antibody (Cat#5444, 1:2,000). Green, isotype control; red, CD3G.