

Anti-CEACAM6 Recombinant Rabbit Monoclonal Antibody



Catalog #: 5446

Aliases

CEACAM6; CEA Cell Adhesion Molecule 6; NCA-50/90; CD66c; NCA; Carcinoembryonic Antigen-Related Cell Adhesion Molecule 6 (Non-Specific Cross Reacting Antigen); Carcinoembryonic Antigen Related Cell Adhesion Molecule 6; Carcinoembryonic Antigen-Related Cell Adhesion Molecule 6; Cell Adhesion Molecule CEACAM6; Normal Cross-Reacting Antigen; Non-Specific Crossreacting Antigen; Cluster Of Differentiation 66c; CD66c Antigen; CEAL

Background

Gene Name: CEACAM6

NCBI Gene Entry: [4680](#)

UniProt Entry: [P40199](#)

Application Information

Molecular Weight: Predicted, 37 kDa; observed, 40-100 kDa

Clonality: Rabbit monoclonal antibody

Clone ID: 25GB1595

Species Reactivity: Human

Applications Tested: Western blotting (WB), flow cytometry (FCM)

Immunogen

A synthesized peptide derived from human CEACAM6

Isotype

Rabbit IgG

Storage Buffer

Supplied in PBS (pH 7.4) containing 50% glycerol, and 0.02% sodium azide.

Storage

Store at -20 °C for one year.

Recommended Dilutions

Western Blotting (WB): 1:1,000-1:5,000

Flow Cytometry (FCM): 1:2,000

SUPPORT

SUPPORT@GENUINBIOTECH.COM
TEL: +1-540-855-7041

ORDERS

SALES@GENUINBIOTECH.COM
FAX: +1-540-855-7041

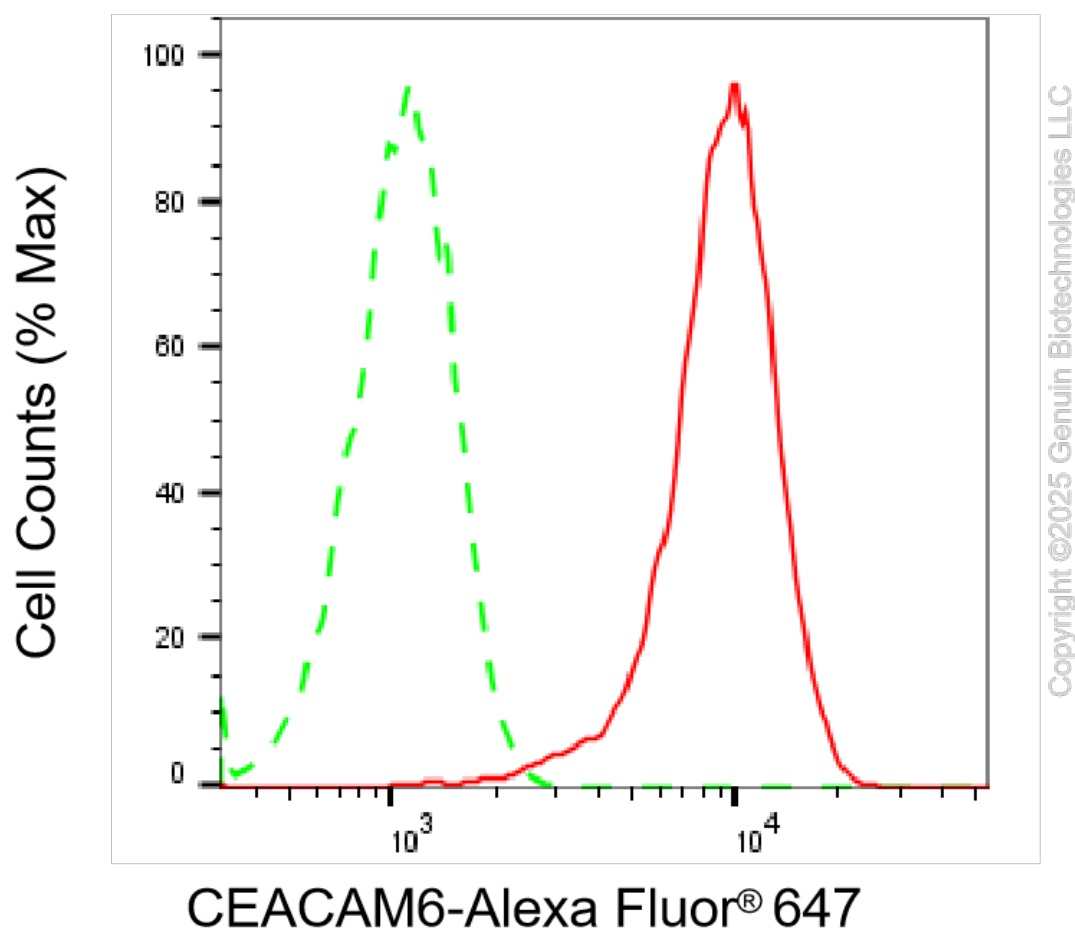
WWW.GENUINBIOTECH.COM

Anti-CEACAM6 Recombinant Rabbit Monoclonal Antibody

PAGE 2

Note: This product is for research use only.

Validation Data



Flow cytometric analysis of CEACAM6 expression in A549 cells using anti-CEACAM6 antibody (Cat#5446, 1:2,000). Green, isotype control; red, CEACAM6.

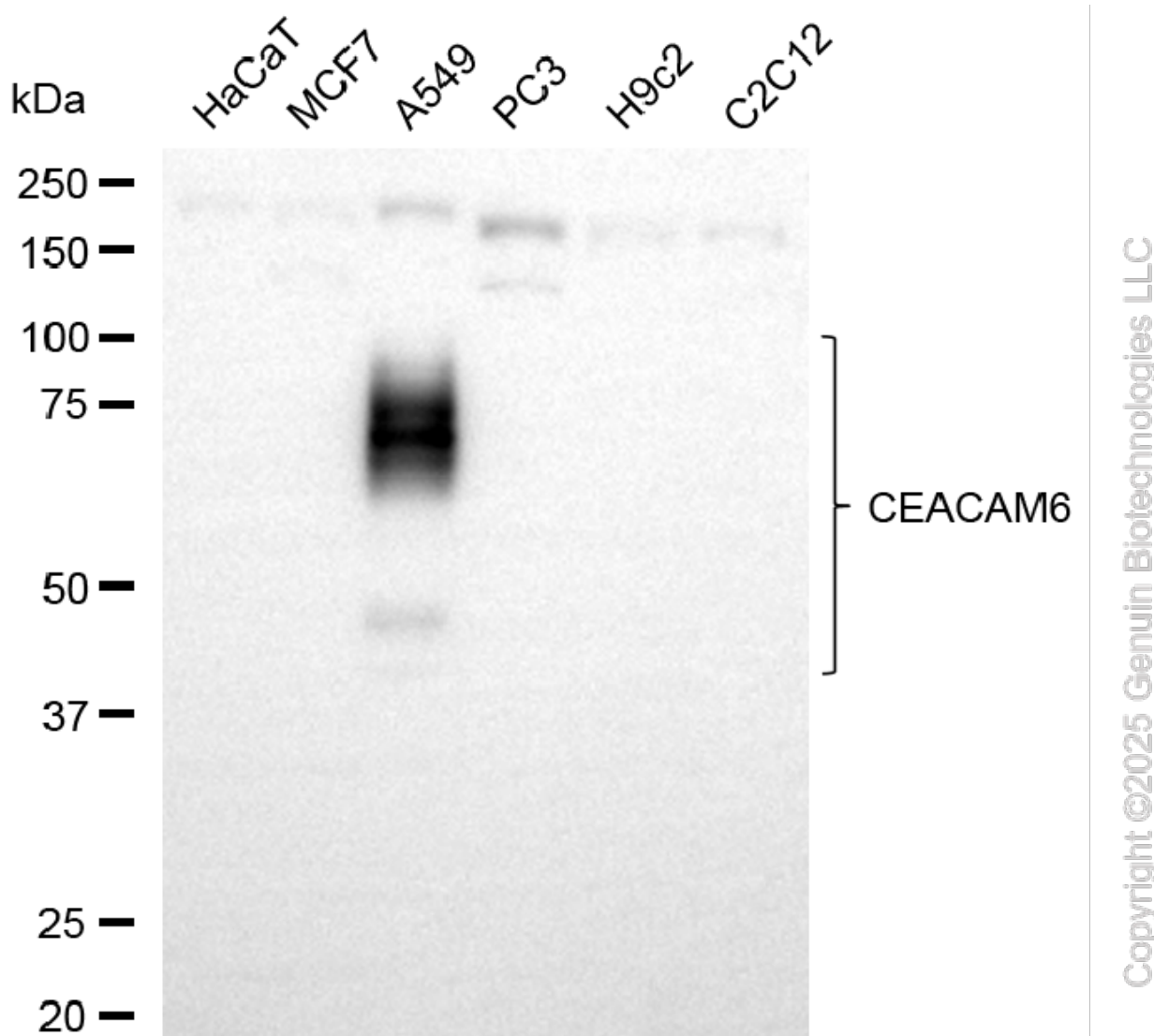
SUPPORT

SUPPORT@GENUINBIOTECH.COM
TEL: +1-540-855-7041

ORDERS

SALES@GENUINBIOTECH.COM
FAX: +1-540-855-7041

WWW.GENUINBIOTECH.COM



Western blotting analysis using anti-CEACAM6 antibody (Cat#5446). Total cell lysates (30 μ g) from various cell lines were loaded and separated by SDS-PAGE. The blot was incubated with anti-CEACAM6 antibody (Cat#5446, 1:5,000) and HRP-conjugated goat anti-rabbit secondary antibody (Cat#201, 1:20,000) respectively. Image was developed using FeQ™ ECL Substrate Kit (Cat#226).