

# Anti-PNP Recombinant Rabbit Monoclonal Antibody



**Catalog #: 5447**

## Aliases

PNP; Purine Nucleoside Phosphorylase; PUNP; NP; Inosine-Guanosine Phosphorylase; Inosine Phosphorylase; EC 2.4.2.1; Epididymis Secretory Sperm Binding Protein Li 156an; Purine-Nucleoside:Orthophosphate Ribosyltransferase; Nucleoside Phosphorylase; HEL-S-156an; PRO1837

## Background

Gene Name: PNP

NCBI Gene Entry: [4860](#)

UniProt Entry: [P00491](#)

## Application Information

Molecular Weight: Predicted, 32 kDa; observed, 29 kDa

Clonality: Rabbit monoclonal antibody

Clone ID: 25GB1600

Species Reactivity: Human

Applications Tested: Western blotting (WB), flow cytometry (FCM)

## Immunogen

A synthesized peptide derived from human PNP

## Isotype

Rabbit IgG

## Storage Buffer

Supplied in PBS (pH 7.4) containing 50% glycerol, and 0.02% sodium azide.

## Storage

Store at -20 °C for one year.

## Recommended Dilutions

Western Blotting (WB): 1:1,000-1:5,000

**Note:** This product is for research use only.

## Validation Data

---

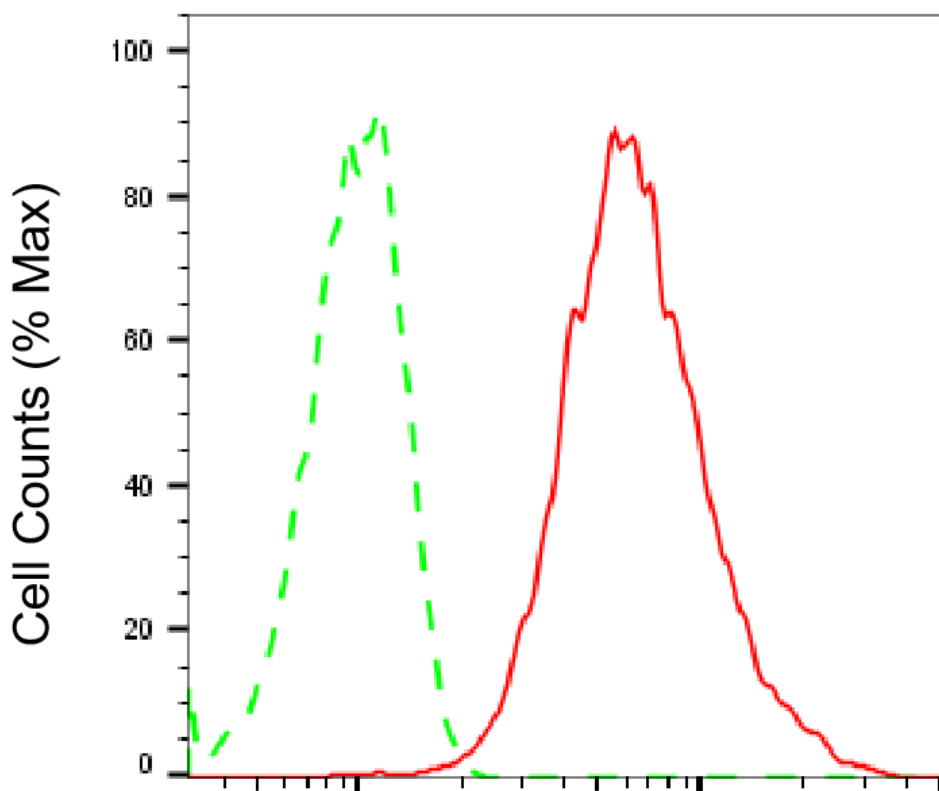
### SUPPORT

SUPPORT@GENUINBIOTECH.COM  
TEL: +1-540-855-7041

### ORDERS

SALES@GENUINBIOTECH.COM  
FAX: +1-540-855-7041

[WWW.GENUINBIOTECH.COM](http://WWW.GENUINBIOTECH.COM)



Copyright ©2025 Genuin Biotechnologies LLC

## Purine nucleoside phosphorylase-Alexa Fluor® 647

Flow cytometric analysis of Purine nucleoside phosphorylase expression in HepG2 cells using anti-Purine nucleoside phosphorylase antibody (Cat#5447, 1:2,000). Green, isotype control; red, Purine nucleoside phosphorylase.

---

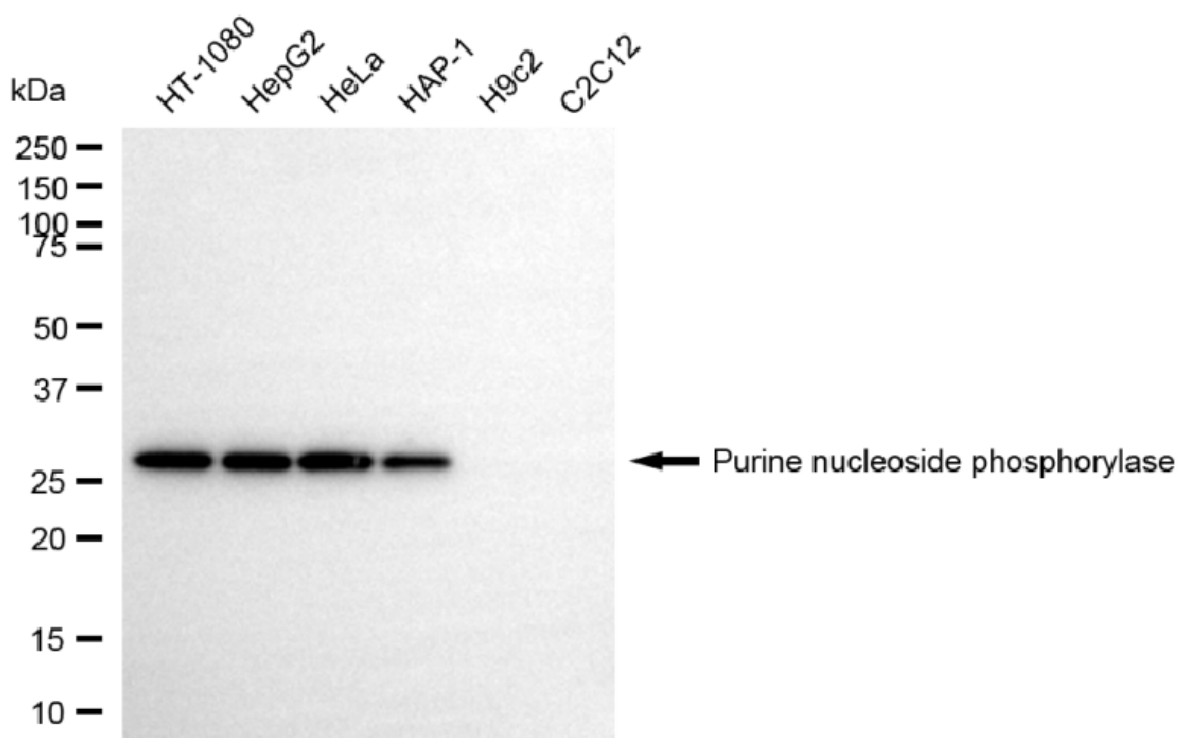
### SUPPORT

SUPPORT@GENUINBIOTECH.COM  
TEL: +1-540-855-7041

### ORDERS

SALES@GENUINBIOTECH.COM  
FAX: +1-540-855-7041

[WWW.GENUINBIOTECH.COM](http://WWW.GENUINBIOTECH.COM)



Copyright ©2025 Genuin Biotechnologies LLC

Western blotting analysis using anti-purine nucleoside phosphorylase antibody (Cat#5447). Total cell lysates (30  $\mu$ g) from various cell lines were loaded and separated by SDS-PAGE. The blot was incubated with anti-purine nucleoside phosphorylase antibody (Cat#5447, 1:5,000) and HRP-conjugated goat anti-rabbit secondary antibody (Cat#201, 1:20,000) respectively. Image was developed using NaQ™ ECL Substrate Kit (Cat#716).