

Anti-PSMA7 Recombinant Rabbit Monoclonal Antibody



Catalog #: 5448

Aliases

PSMA7; Proteasome 20S Subunit Alpha 7; HSPC; Proteasome Subunit XAPC7; Proteasome Subunit RC6-1; XAPC7; RC6-1; C6; Proteasome (Prosome, Macropain) Subunit, Alpha Type, 7; Proteasome Subunit Alpha Type-7; Proteasome Subunit Alpha 7; Alpha-4; Epididymis Secretory Protein Li 276; Testicular Tissue Protein Li 151; Proteasome Subunit Alpha 4; Proteasome Subunit Alpha-4; Proteasome Subunit A4; EC 3.4.25.1; HEL-S-276

Background

Gene Name: PSMA7

NCBI Gene Entry: [5688](#)

UniProt Entry: [O14818](#)

Application Information

Molecular Weight: Predicted, 28 kDa; observed, 28 kDa

Clonality: Rabbit monoclonal antibody

Clone ID: 25GB1605

Species Reactivity: Human, mouse

Applications Tested: Western blotting (WB), immunocytochemistry (IC), flow cytometry (FCM)

Immunogen

A synthesized peptide derived from human PSMA7

Isotype

Rabbit IgG

Storage Buffer

Supplied in PBS (pH 7.4) containing 50% glycerol, and 0.02% sodium azide.

Storage

Store at -20 °C for one year.

Recommended Dilutions

Western Blotting (WB): 1:1,000-1:5,000

Immunocytochemistry (IC): 1:100-1:1,000

SUPPORT

SUPPORT@GENUINBIOTECH.COM
TEL: +1-540-855-7041

ORDERS

SALES@GENUINBIOTECH.COM
FAX: +1-540-855-7041

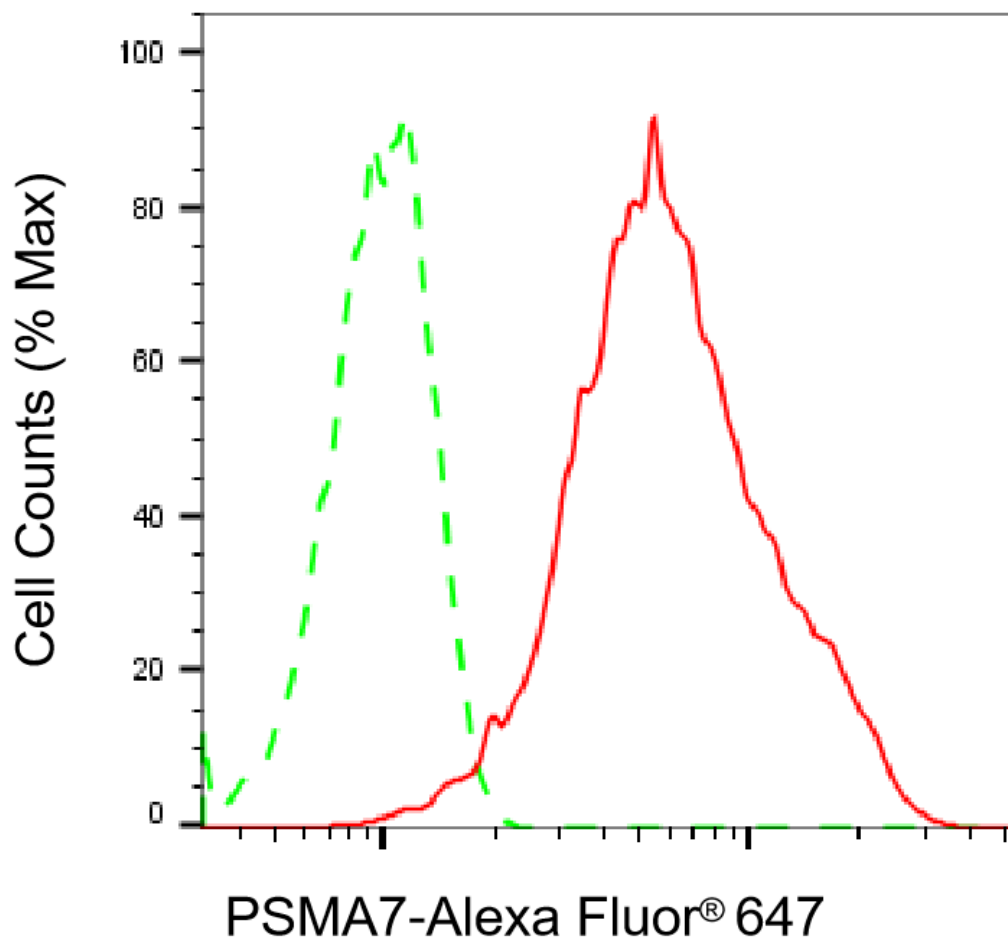
WWW.GENUINBIOTECH.COM

Anti-PSMA7 Recombinant Rabbit Monoclonal Antibody

PAGE 2

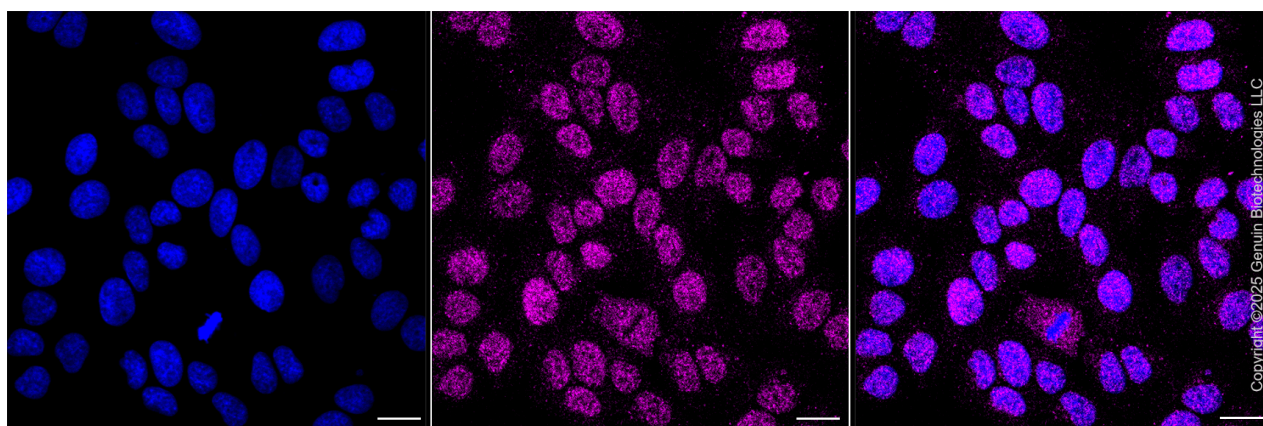
Note: This product is for research use only.

Validation Data



Copyright ©2025 Genuin Biotechnologies LLC

Flow cytometric analysis of PSMA7 expression in HepG2 cells using anti-PSMA7 antibody (Cat#5448, 1:2,000). Green, isotype control; red, PSMA7.



Copyright ©2025 Genuin Biotechnologies LLC

SUPPORT

SUPPORT@GENUINBIOTECH.COM
TEL: +1-540-855-7041

ORDERS

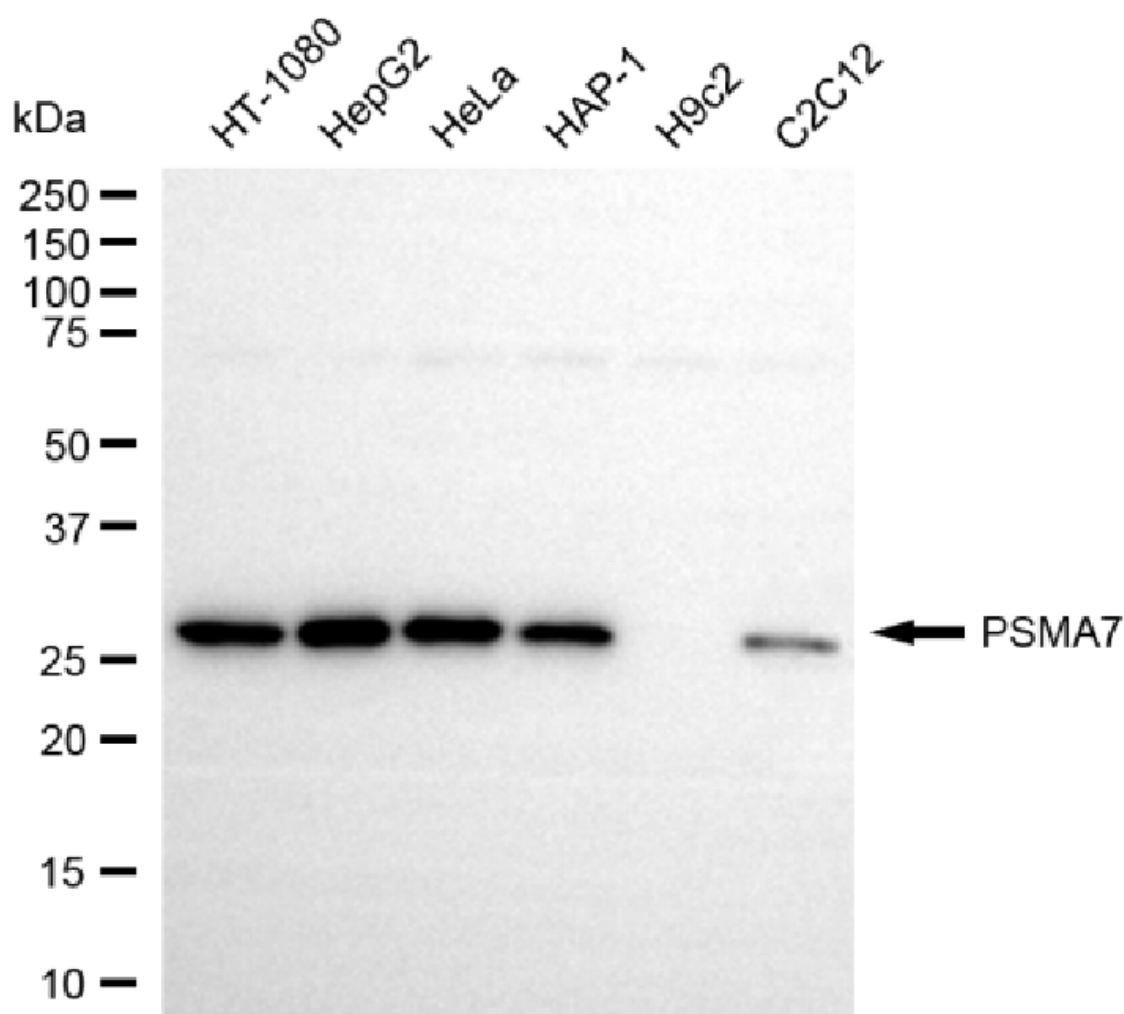
SALES@GENUINBIOTECH.COM
FAX: +1-540-855-7041

WWW.GENUINBIOTECH.COM

Anti-PSMA7 Recombinant Rabbit Monoclonal Antibody

PAGE 3

Immunocytochemical staining of HepG2 cells with anti-PSMA7 antibody (Cat#5448, 1:1,000) . Nuclei were stained blue with DAPI; PSMA7 was stained magenta with Alexa Fluor® 647. Images were taken using Leica stellaris 5. Protein abundance based on laser Intensity and smart gain: Medium. Scale bar, 20 μ m.



Western blotting analysis using anti-PSMA7 antibody (Cat#5448). Total cell lysates (30 μ g) from various cell lines were loaded and separated by SDS-PAGE. The blot was incubated with anti-PSMA7 antibody (Cat#5448, 1:5,000) and HRP-conjugated goat anti-rabbit secondary antibody (Cat#201, 1:20,000) respectively. Image was developed using NaQ™ ECL Substrate Kit (Cat#716).

SUPPORT

SUPPORT@GENUINBIOTECH.COM
TEL: +1-540-855-7041

ORDERS

SALES@GENUINBIOTECH.COM
FAX: +1-540-855-7041

WWW.GENUINBIOTECH.COM