

## Catalog #: 5453

### Aliases

DECR1; 2,4-Dienoyl-CoA Reductase 1; SDR18C1; DECR; 2,4-Dienoyl-CoA Reductase [(3E)-Enoyl-CoA-Producing], Mitochondrial; Short Chain Dehydrogenase/Reductase Family 18C Member 1; 2,4-Dienoyl-CoA Reductase 1, Mitochondrial; Short Chain Dehydrogenase/Reductase Family 18C, Member 1; 2,4-Dienoyl-CoA Reductase, Mitochondrial; 2,4-Dienoyl-CoA Reductase [NADPH]; 4-Enoyl-CoA Reductase [NADPH]; 4-Enoyl-CoA Reductase; EC 1.3.1.124; NADPH

### Background

Gene Name: DECR1

NCBI Gene Entry: [1666](#)

UniProt Entry: [Q16698](#)

### Application Information

Molecular Weight: Predicted, 36 kDa; observed, 29 kDa

Clonality: Mouse oligoclonal antibody

Species Reactivity: Human

Applications Tested: Western blotting (WB), flow cytometry (FCM)

### Immunogen

Recombinant protein of human DECR1

### Isotype

Mouse IgG

### Storage Buffer

Supplied in PBS (pH 7.4) containing 50% glycerol, and 0.02% sodium azide.

### Storage

Store at -20 °C for one year.

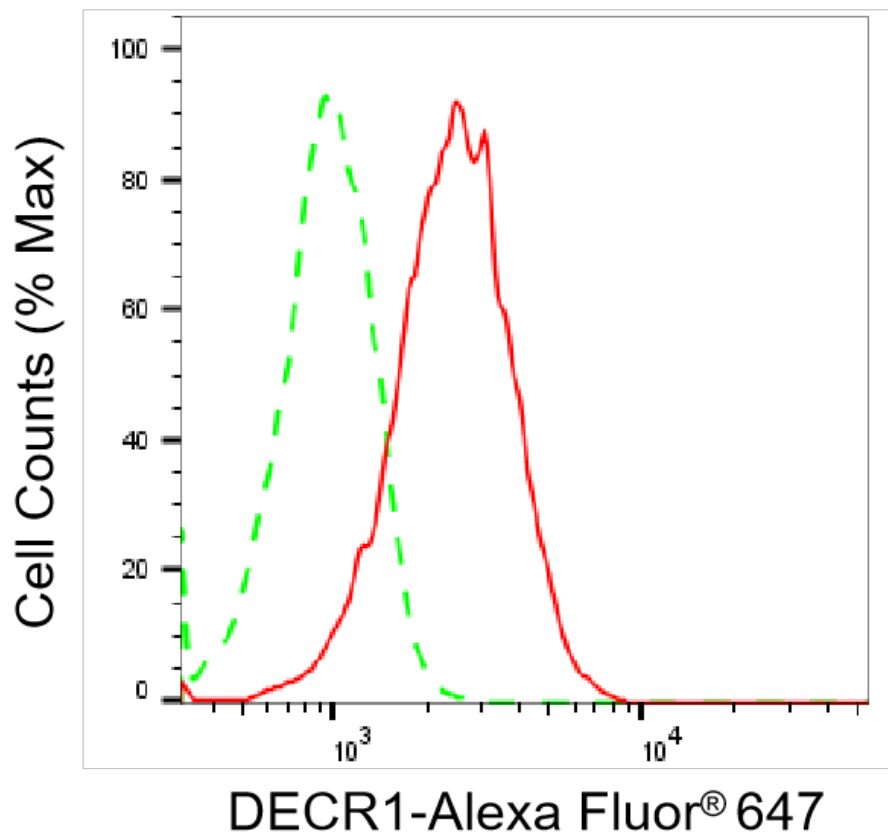
### Recommended Dilutions

Western Blotting (WB): 1:400-1:2,000

Flow Cytometry (FCM): 1:2,000

**Note:** This product is for research use only.

## Validation Data



Flow cytometric analysis of DECOR1 expression in HAP-1 cells using anti-DECOR1 antibody (Cat#5453, 1:2,000). Green, isotype control; red, DECOR1.

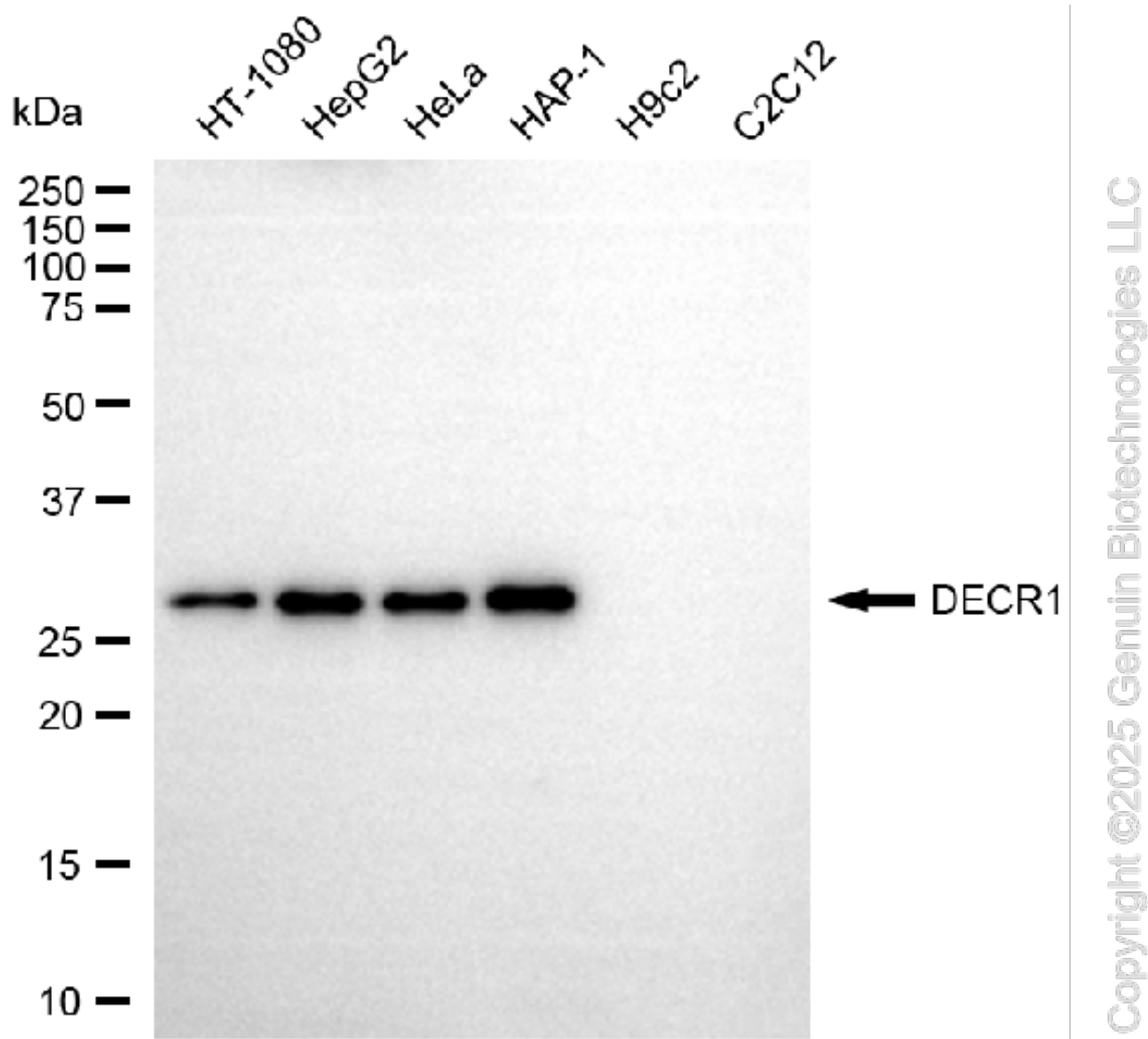
## SUPPORT

SUPPORT@GENUINBIOTECH.COM  
TEL: +1-540-855-7041

## ORDERS

SALES@GENUINBIOTECH.COM  
FAX: +1-540-855-7041

WWW.GENUINBIOTECH.COM



Western blotting analysis using anti-DECOR1 antibody (Cat#5453). Total cell lysates (30  $\mu$ g) from various cell lines were loaded and separated by SDS-PAGE. The blot was incubated with anti-DECOR1 antibody (Cat#5453, 1:2,000) and HRP-conjugated goat anti-mouse secondary antibody (Cat#101, 1:20,000) respectively. Image was developed using FeQ™ ECL Substrate Kit (Cat#226).