

Catalog #: 5459

Aliases

PRRX1; Paired Related Homeobox 1; PHOX1; PMX1; Paired Mesoderm Homeobox Protein 1; Homeobox Protein PHOX1; PRX-1; Paired-Related Homeobox Protein 1; Paired Mesoderm Homeo Box 1; AGOTC; PRX1

Background

Gene Name: PRRX1

NCBI Gene Entry: [5396](#)

UniProt Entry: [P54821](#)

Application Information

Molecular Weight: Predicted, 27 kDa; observed, 25 kDa

Clonality: Mouse oligoclonal antibody

Species Reactivity: Human, mouse, rat

Applications Tested: Western blotting (WB), flow cytometry (FCM)

Immunogen

A synthesized peptide derived from human PRRX1

Isotype

Mouse IgG

Storage Buffer

Supplied in PBS (pH 7.4) containing 50% glycerol, and 0.02% sodium azide.

Storage

Store at -20 °C for one year.

Recommended Dilutions

Western Blotting (WB): 1:400-1:2,000

Flow Cytometry (FCM): 1:2,000

Note: This product is for research use only.

Validation Data

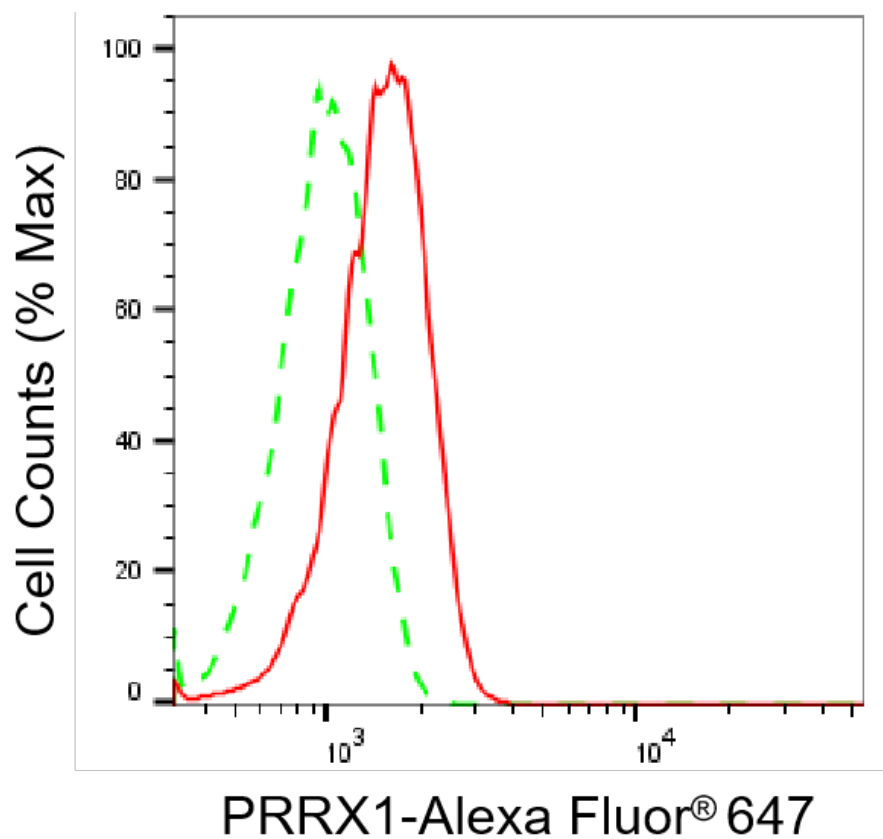
SUPPORT

SUPPORT@GENUINBIOTECH.COM
TEL: +1-540-855-7041

ORDERS

SALES@GENUINBIOTECH.COM
FAX: +1-540-855-7041

WWW.GENUINBIOTECH.COM



Copyright ©2025 Genuin Biotechnologies LLC

Flow cytometric analysis of PRRX1 expression in C2C12 cells using anti-PRRX1 antibody (Cat#5459, 1:2,000). Green, isotype control; red, PRRX1.

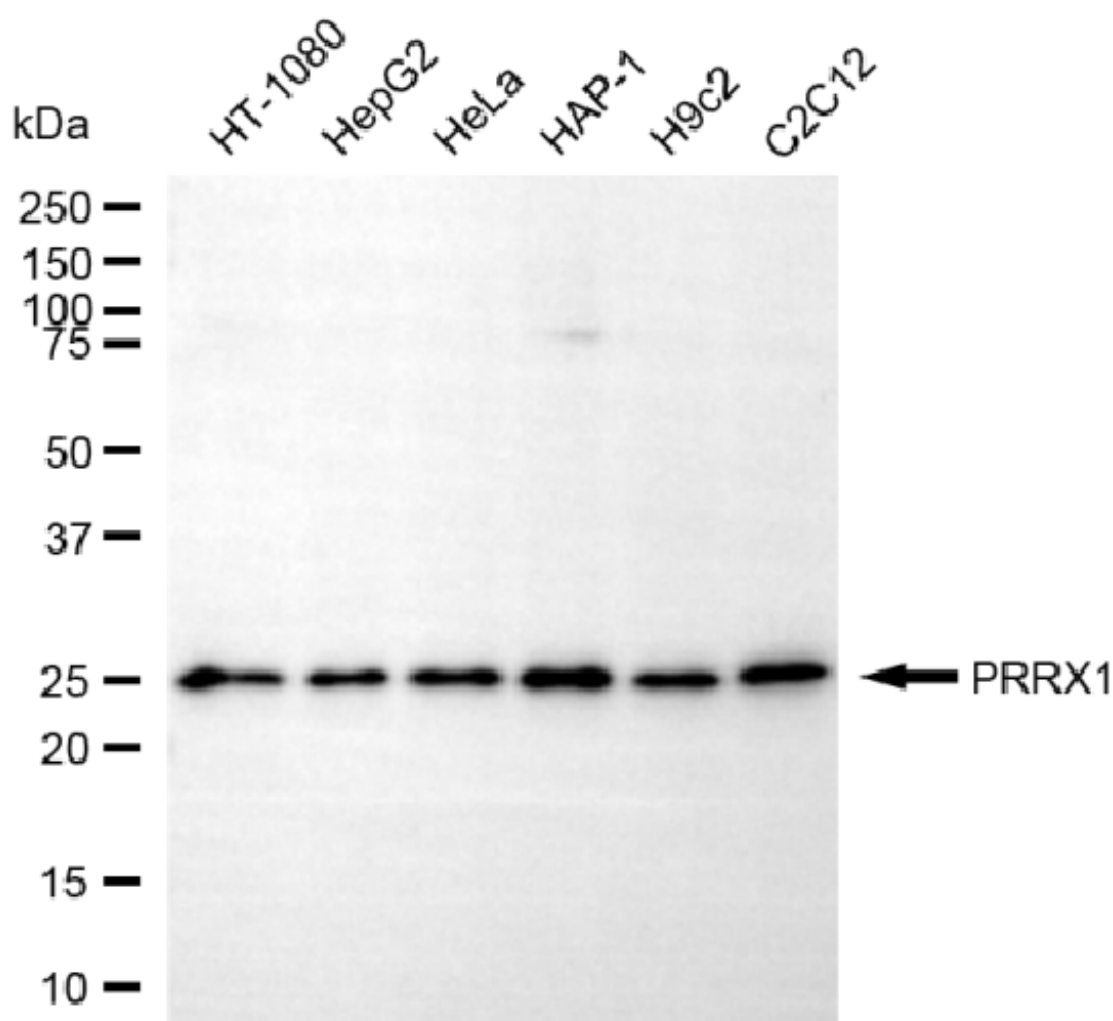
SUPPORT

SUPPORT@GENUINBIOTECH.COM
TEL: +1-540-855-7041

ORDERS

SALES@GENUINBIOTECH.COM
FAX: +1-540-855-7041

WWW.GENUINBIOTECH.COM



Copyright ©2025 Genuin Biotechnologies LLC

Western blotting analysis using anti-PRRX1 antibody (Cat#5459). Total cell lysates (30 μ g) from various cell lines were loaded and separated by SDS-PAGE. The blot was incubated with anti-PRRX1 antibody (Cat#5459, 1:2,500) and HRP-conjugated goat anti-mouse secondary antibody (Cat#101, 1:20,000) respectively. Image was developed using NaQ™ ECL Substrate Kit (Cat#716).