

Anti-Synaptojanin 2 Recombinant Rabbit Monoclonal Antibody



Catalog #: 5471

Aliases

SYNJ2; Synaptojanin 2; Synaptic Inositol 1,4,5-Trisphosphate 5-Phosphatase 2; INPP5H; Inositol Polyphosphate-5-Phosphatase H; Phosphoinositide 5-Phosphatase; Synaptojanin-2; EC 3.1.3.36; Inositol Phosphate 5'-Phosphatase 2; KIAA0348

Background

Gene Name: SYNJ2

NCBI Gene Entry: [8871](#)

UniProt Entry: [O15056](#)

Application Information

Molecular Weight: Predicted, 166 kDa; observed, 143 kDa

Clonality: Rabbit monoclonal antibody

Clone ID: 25GB1640

Species Reactivity: Human

Applications Tested: Western blotting (WB), immunocytochemistry (IC)

Immunogen

A synthesized peptide derived from human Synaptojanin-2

Isotype

Rabbit IgG

Storage Buffer

Supplied in PBS (pH 7.4) containing 50% glycerol, and 0.02% sodium azide.

Storage

Store at -20 °C for one year.

Recommended Dilutions

Western Blotting (WB): 1:1,000-1:5,000

Immunocytochemistry (IC): 1:100-1:1,000

Note: This product is for research use only.

Validation Data

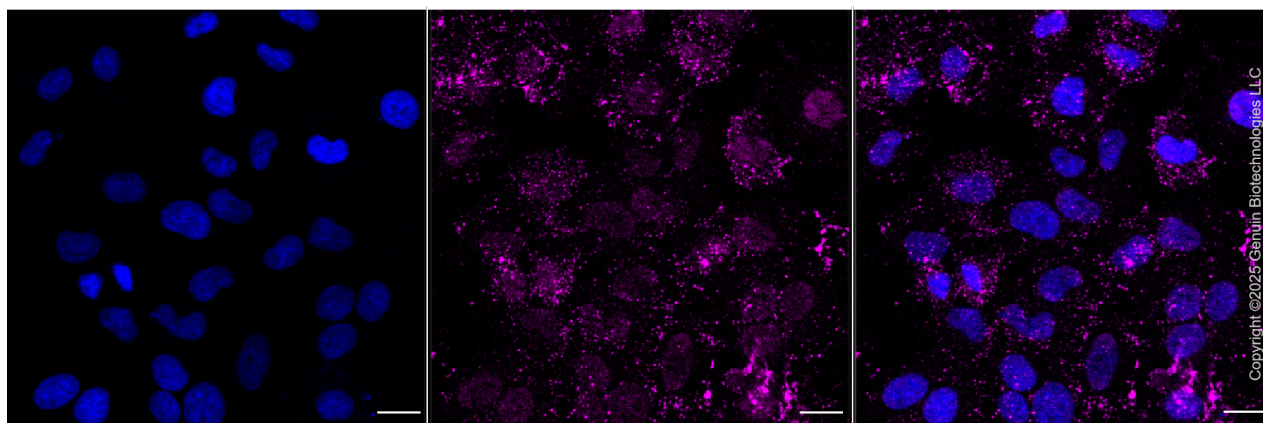
SUPPORT

SUPPORT@GENUINBIOTECH.COM
TEL: +1-540-855-7041

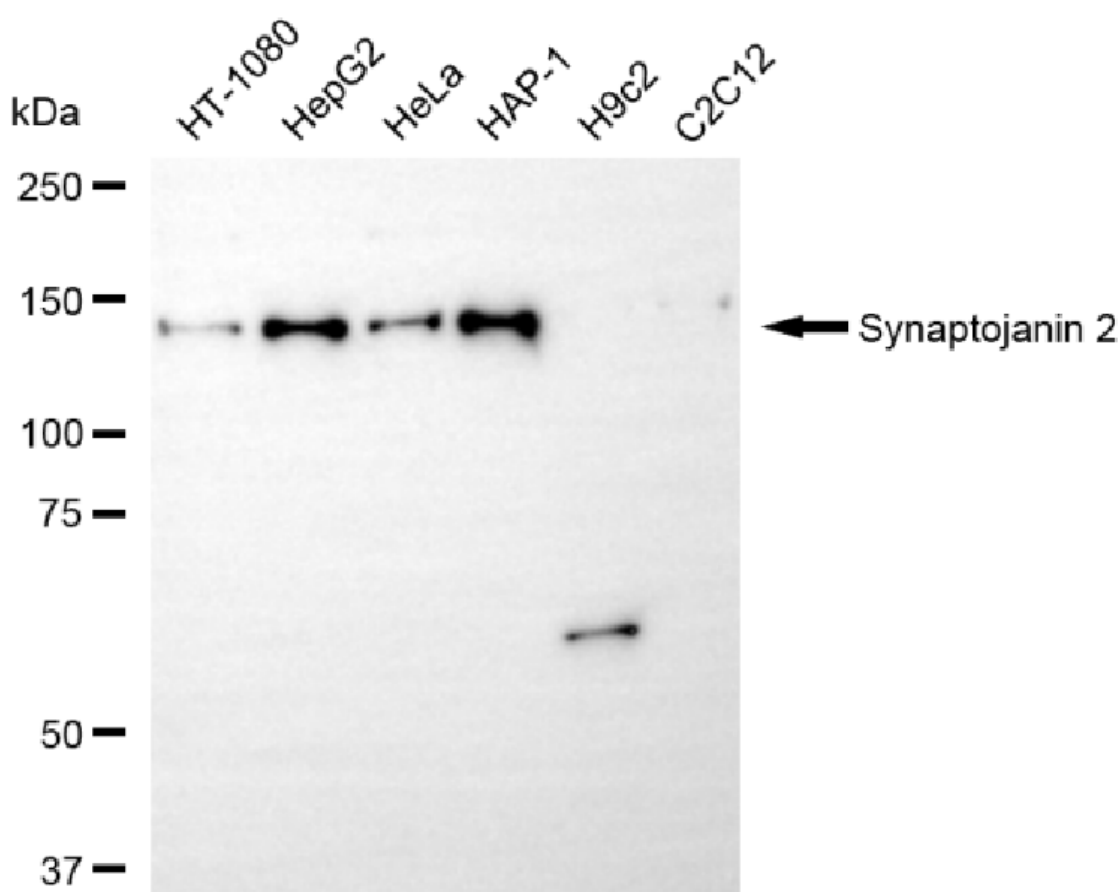
ORDERS

SALES@GENUINBIOTECH.COM
FAX: +1-540-855-7041

WWW.GENUINBIOTECH.COM



Immunocytochemical staining of HepG2 cells with anti-Synaptojanin 2 antibody (Cat#5471, 1:1,000). Nuclei were stained blue with DAPI; Synaptojanin 2 was stained magenta with Alexa Fluor® 647. Images were taken using Leica stellaris 5. Protein abundance based on laser Intensity and smart gain: Medium. Scale bar, 20 μ m.



Western blotting analysis using anti-synaptojanin 2 antibody (Cat#5471). Total cell lysates (30 μ g) from various cell lines were loaded and separated by SDS-PAGE. The blot was incubated with anti-synaptojanin 2 antibody (Cat#5471, 1:5,000) and HRP-conjugated goat anti-rabbit secondary

SUPPORT

SUPPORT@GENUINBIOTECH.COM
TEL: +1-540-855-7041

ORDERS

SALES@GENUINBIOTECH.COM
FAX: +1-540-855-7041

WWW.GENUINBIOTECH.COM

Anti-Synaptojanin 2 Recombinant Rabbit Monoclonal Antibody

PAGE 3

antibody (Cat#201, 1:20,000) respectively. Image was developed using NaQ™ ECL Substrate Kit (Cat#716).

SUPPORT

SUPPORT@GENUINBIOTECH.COM
TEL: +1-540-855-7041

ORDERS

SALES@GENUINBIOTECH.COM
FAX: +1-540-855-7041

WWW.GENUINBIOTECH.COM