

# Anti-DACH1 Recombinant Rabbit Monoclonal Antibody



**Catalog #: 5474**

## Aliases

DACH1; Dachshund Family Transcription Factor 1; DACH; Dachshund Homolog 1; Dachshund Homolog 1 (Drosophila); Dachshund Homolog (Drosophila); Dac Homolog; Dach1

## Background

Gene Name: DACH1

NCBI Gene Entry: [1602](#)

UniProt Entry: [Q9UI36](#)

## Application Information

Molecular Weight: Predicted, 79 kDa; observed, 90 kDa

Clonality: Rabbit monoclonal antibody

Clone ID: 25GB1655

Species Reactivity: Human, mouse, rat

Applications Tested: Western blotting (WB)

## Immunogen

A synthesized peptide derived from human DACH1

## Isotype

Rabbit IgG

## Storage Buffer

Supplied in PBS (pH 7.4) containing 50% glycerol, and 0.02% sodium azide.

## Storage

Store at -20 °C for one year.

## Recommended Dilutions

Western Blotting (WB): 1:1,000-1:5,000

**Note:** This product is for research use only.

## Validation Data

---

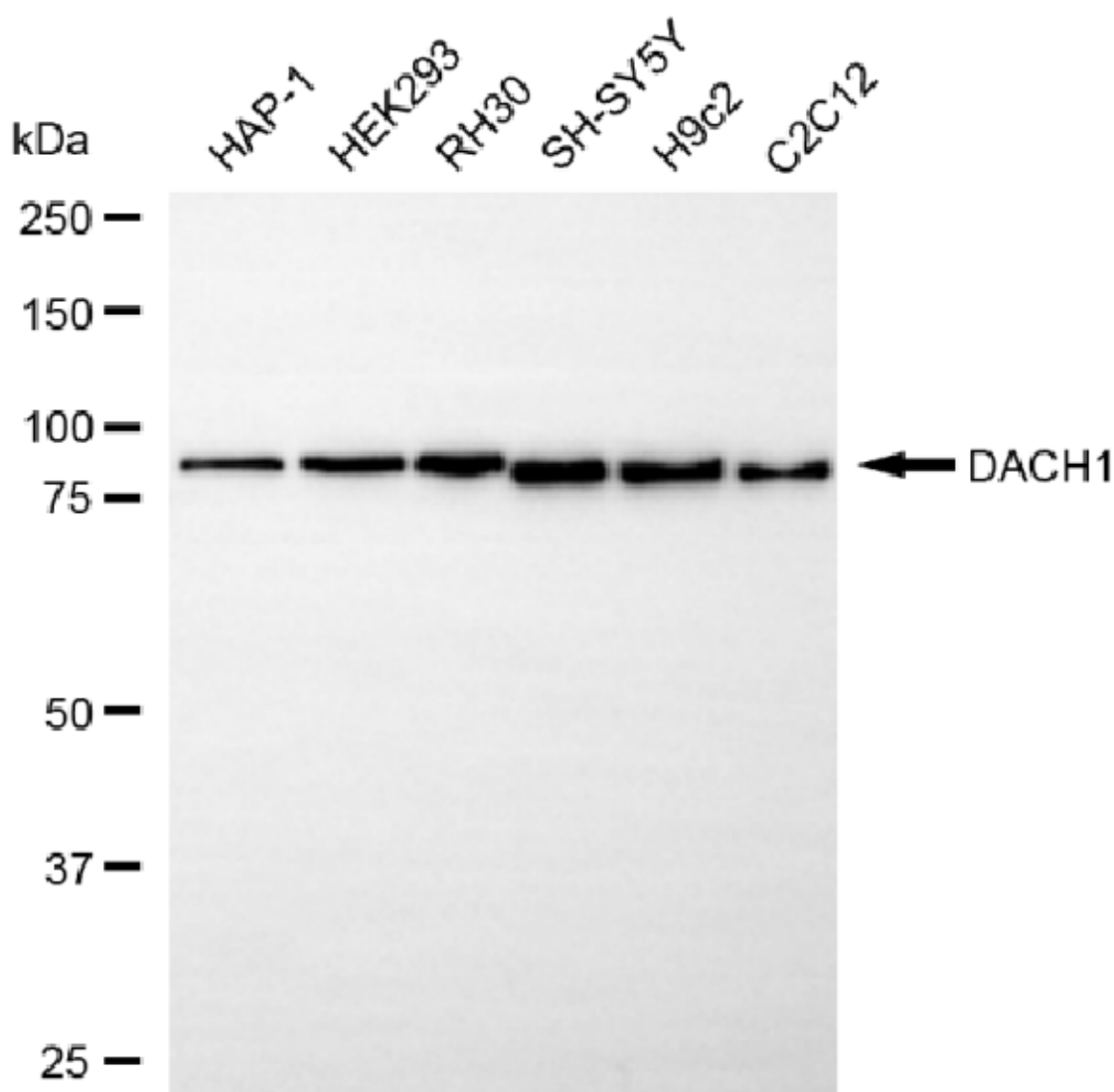
### SUPPORT

SUPPORT@GENUINBIOTECH.COM  
TEL: +1-540-855-7041

### ORDERS

SALES@GENUINBIOTECH.COM  
FAX: +1-540-855-7041

[WWW.GENUINBIOTECH.COM](http://WWW.GENUINBIOTECH.COM)



Copyright ©2025 Genuin Biotechnologies LLC

Western blotting analysis using anti-DACH1 antibody (Cat#5474). Total cell lysates (30  $\mu$ g) from various cell lines were loaded and separated by SDS-PAGE. The blot was incubated with anti-DACH1 antibody (Cat#5474, 1:5,000) and HRP-conjugated goat anti-rabbit secondary antibody (Cat#201, 1:20,000) respectively. Image was developed using NaQ™ ECL Substrate Kit (Cat#716).

## SUPPORT

SUPPORT@GENUINBIOTECH.COM  
TEL: +1-540-855-7041

## ORDERS

SALES@GENUINBIOTECH.COM  
FAX: +1-540-855-7041

[WWW.GENUINBIOTECH.COM](http://WWW.GENUINBIOTECH.COM)